

UK Office

Everest Biotech Ltd

Cherwell Innovation Centre
77 Heyford Park
Upper Heyford
Oxfordshire
OX25 5HD
UK

Enquiries:

info@everestbiotech.com

Sales:

sales@everestbiotech.com

Tech support:

support@everestbiotech.com

Tel: +44 (0)1869 238326

www.everestbiotech.com

**Research Use Only. Not for
diagnostic or therapeutic use.**

EB06334 - Goat Anti-NIR1 / PITPNM3 Antibody

Size: 100µg specific antibody in 200µl



Target Protein

Principal Names: NIR1, PITPNM family member 3, PYK2 N-terminal domain-interacting receptor 1, RDGBA3, PITPNM3, CORD5, MGC157740, MGC157741, membrane-associated phosphatidylinositol transfer protein 3, retinal degeneration B alpha 3

Official Symbol: PITPNM3

Accession Number(s): NP_112497.2; NP_001159438.1

Human GeneID(s): [83394](#)

Immunogen

Peptide with sequence C-SWARGPPKFESVP, from the C Terminus of the protein sequence according to NP_112497.2; NP_001159438.1.

Please note the [peptide](#) is available for sale.

Purification and Storage

Purified from goat serum by ammonium sulphate precipitation followed by antigen affinity chromatography using the immunizing peptide.

Supplied at 0.5 mg/ml in Tris saline, 0.02% sodium azide, pH7.3 with 0.5% bovine serum albumin.

Aliquot and store at -20°C. Minimize freezing and thawing.

Applications Tested

Peptide ELISA: antibody detection limit dilution 1:16000.

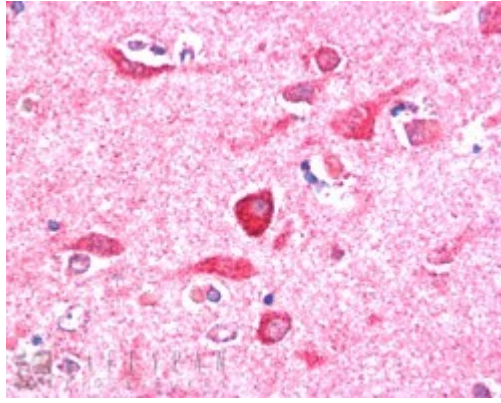
Western blot: Preliminary experiments gave an approx 50kDa band in Human Heart lysates after 0.1µg/ml antibody staining. The 50kDa band was successfully blocked by incubation with the immunizing peptide. Please note that currently we cannot find an explanation in the literature for the band we observe given the calculated size of 107kDa according to NP_112497. We would appreciate any feedback from people in the field - have any results been reported with other antibodies/lysates? Have any further splice variants/modified forms been reported?

IHC: In paraffin embedded Human Cerebral Cortex shows strong staining of cytoplasm in several neuronal cells. Recommended concentration, 5-10µg/ml.

Species Reactivity

Tested: Human

Expected from sequence similarity: Human, Mouse, Dog



EB06334 (5µg/ml) staining of paraffin embedded Human Cerebral Cortex. Steamed antigen retrieval with citrate buffer pH 6, AP-staining.