

## UK Office

### Everest Biotech Ltd

Cherwell Innovation Centre  
77 Heyford Park  
Upper Heyford  
Oxfordshire  
OX25 5HD  
UK

Enquiries:

[info@everestbiotech.com](mailto:info@everestbiotech.com)

Sales:

[sales@everestbiotech.com](mailto:sales@everestbiotech.com)

Tech support:

[support@everestbiotech.com](mailto:support@everestbiotech.com)

Tel: +44 (0)1869 238326

[www.everestbiotech.com](http://www.everestbiotech.com)

**Research Use Only. Not for  
diagnostic or therapeutic use.**

## EB06971 - Goat Anti-NHERF2 (isoform a) Antibody

Size: 100µg specific antibody in 200µl



### Target Protein

**Principal Names:** SLC9A3R2, solute carrier family 9 (sodium/hydrogen exchanger), isoform 3 regulator 2, HGNC:11076, E3KARP, NHE3RF2, NHERF-2, NHERF2, OCTS2, SIP-1, SIP1, TKA-1, sodium/hydrogen exchanger, solute carrier family 9 (sodium/hydrogen exchanger), isoform 3 regulatory factor 2, solute carrier family 9 isoform 3 regulator 2, solute carrier family 9 (sodium/hydrogen exchanger), member 3 regulator 2, MGC104639, solute carrier family 9 (sodium/hydrogen exchanger), isoform 3 regulatory factor 2

**Official Symbol:** SLC9A3R2

**Accession Number(s):** NP\_001123484.1

**Human GeneID(s):** [9351](#)

**Important Comments:** Please note that this variant has an extra insertion of 11 residues compared to NP\_004776.3. The immunizing peptide represents this insertion.

### Immunogen

Peptide with sequence C-DGSAWKQDPFQ, from the internal region of the protein sequence according to NP\_001123484.1.

Please note the [peptide](#) is available for sale.

### Purification and Storage

Purified from goat serum by ammonium sulphate precipitation followed by antigen affinity chromatography using the immunizing peptide.

Supplied at 0.5 mg/ml in Tris saline, 0.02% sodium azide, pH7.3 with 0.5% bovine serum albumin.

Aliquot and store at -20°C. Minimize freezing and thawing.

### Applications Tested

**Peptide ELISA:** antibody detection limit dilution 1:32000.

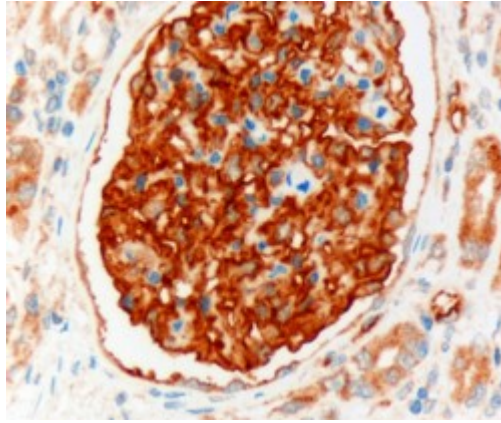
**Western blot:** Approx 38kDa band observed in human kidney lysates (calculated MW of 37.4kDa according to BAA33216.1). Recommended concentration: 0.3-1µg/ml.

**IHC:** In paraffin embedded Human Kidney shows strong membranous staining in glomerulus-. Recommended concentration, 1-2µg/ml.

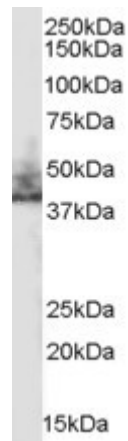
### Species Reactivity

**Tested:** Human

**Expected from sequence similarity:** Human



EB06971 (3µg/ml) staining of paraffin embedded Human Kidney. Microwaved antigen retrieval with Tris/EDTA buffer pH9, HRP-staining.



EB06971 (0.3µg/ml) staining of human kidney lysate (35µg protein in RIPA buffer). Primary incubation was 1 hour. Detected by chemiluminescence.