

UK Office

Everest Biotech Ltd

Cherwell Innovation Centre
77 Heyford Park
Upper Heyford
Oxfordshire
OX25 5HD
UK

Enquiries:

info@everestbiotech.com

Sales:

sales@everestbiotech.com

Tech support:

support@everestbiotech.com

Tel: +44 (0)1869 238326

www.everestbiotech.com

**Research Use Only. Not for
diagnostic or therapeutic use.**

EB05227 - Goat Anti-NFIL3 Antibody

Size: 100µg specific antibody in 200µl



Target Protein

Principal Names: NFIL3, nuclear factor, interleukin 3 regulated, E4BP4, IL3BP1, NFIL3A, NF-IL3A, interleukin-3 promoter transcriptional activator, OTTHUMP00000021633

Official Symbol: NFIL3

Accession Number(s): NP_005375.2

Human GeneID(s): [4783](#)

Non-Human GeneID(s): 18030 (mouse), 114519 (rat)

Immunogen

Peptide with sequence C-RLIATQPISASDSG, from the C Terminus of the protein sequence according to NP_005375.2.

Please note the [peptide](#) is available for sale.

Purification and Storage

Purified from goat serum by ammonium sulphate precipitation followed by antigen affinity chromatography using the immunizing peptide.

Supplied at 0.5 mg/ml in Tris saline, 0.02% sodium azide, pH7.3 with 0.5% bovine serum albumin.

Aliquot and store at -20°C. Minimize freezing and thawing.

Applications Tested

Peptide ELISA: antibody detection limit dilution 1:2000.

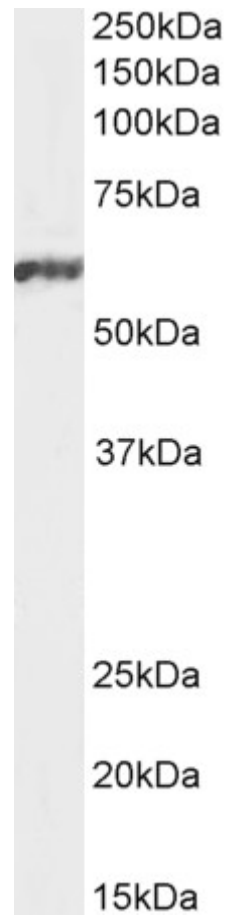
Western blot: Approx. 60kDa band observed in nuclear lysates of cell line Jurkat and HeLa (calculated MW of 51.5kDa according to NP_005375.2). The observed molecular weight corresponds to different antibodies from other commercial sources. An additional band of 30kDa was observed in lysates of cell line HeLa, which was completely blocked with the immunizing peptide. Recommended concentration: 0.5-2µg/ml. Primary incubation 1 hour at room temperature.

Flow Cytometry: Flow cytometric analysis of Human peripheral blood mononuclear cells. Recommended concentration: 10ug/ml.

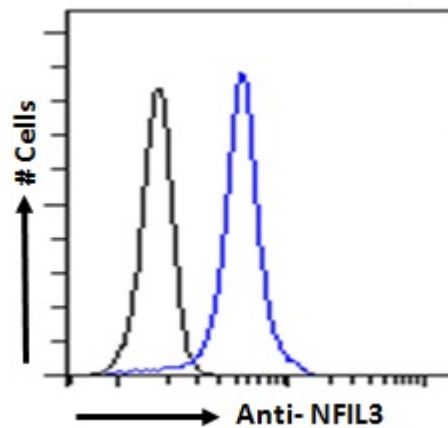
Species Reactivity

Tested: Human

Expected from sequence similarity: Human, Mouse, Rat



EB05227 staining (1 μ g/ml) of Jurkat nuclear cell lysate (RIPA buffer, 20 μ g total protein per lane). Detected using chemiluminescence.



EB05227 Flow cytometric analysis of paraformaldehyde fixed Human peripheral blood mononuclear cells (blue line), permeabilized with 0.5% Triton. Primary incubation 1hr (10 μ g/ml) followed by Alexa Fluor 488 secondary antibody (2 μ g/ml). IgG control: Unimmunized goat IgG (black line) followed by Alexa Fluor 488 secondary antibody.