

## UK Office

### Everest Biotech Ltd

Cherwell Innovation Centre  
77 Heyford Park  
Upper Heyford  
Oxfordshire  
OX25 5HD  
UK

Enquiries:

[info@everestbiotech.com](mailto:info@everestbiotech.com)

Sales:

[sales@everestbiotech.com](mailto:sales@everestbiotech.com)

Tech support:

[support@everestbiotech.com](mailto:support@everestbiotech.com)

Tel: +44 (0)1869 238326

[www.everestbiotech.com](http://www.everestbiotech.com)

**Research Use Only. Not for  
diagnostic or therapeutic use.**

## EB06688 - Goat Anti-Neuroserpin Antibody

Size: 100µg specific antibody in 200µl



### Target Protein

**Principal Names:** neuroserpin, SERPINI1, PI12, serine (or cysteine) proteinase inhibitor, clade I (neuroserpin), member 1, protease inhibitor 12 (neuroserpin), serpin peptidase inhibitor, clade I (neuroserpin), member 1, DKFZp781N13156

**Official Symbol:** SERPINI1

**Accession Number(s):** NP\_005016.1

**Human GeneID(s):** [5274](#)

**Important Comments:** Reported variants represent identical protein (NP\_005016.1; NP\_001116224.1).

### Immunogen

Peptide with sequence C-TMNTSGHDFEEL, from the C Terminus of the protein sequence according to NP\_005016.1.

Please note the [peptide](#) is available for sale.

### Purification and Storage

Purified from goat serum by ammonium sulphate precipitation followed by antigen affinity chromatography using the immunizing peptide.

Supplied at 0.5 mg/ml in Tris saline, 0.02% sodium azide, pH7.3 with 0.5% bovine serum albumin.

Aliquot and store at -20°C. Minimize freezing and thawing.

### Applications Tested

**Peptide ELISA:** antibody detection limit dilution 1:32000.

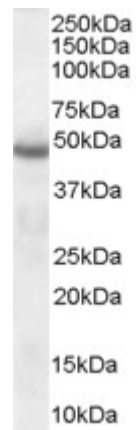
**Western blot:** Approx 48kDa band observed in Human Brain lysate (calculated MW of 46.4kDa according to NP\_005016.1). Recommended concentration: 1-3µg/ml. Primary incubation was 1 hour.

**IHC:** Paraffin embedded Human Brain (Cortex). Recommended concentration: 5µg/ml.

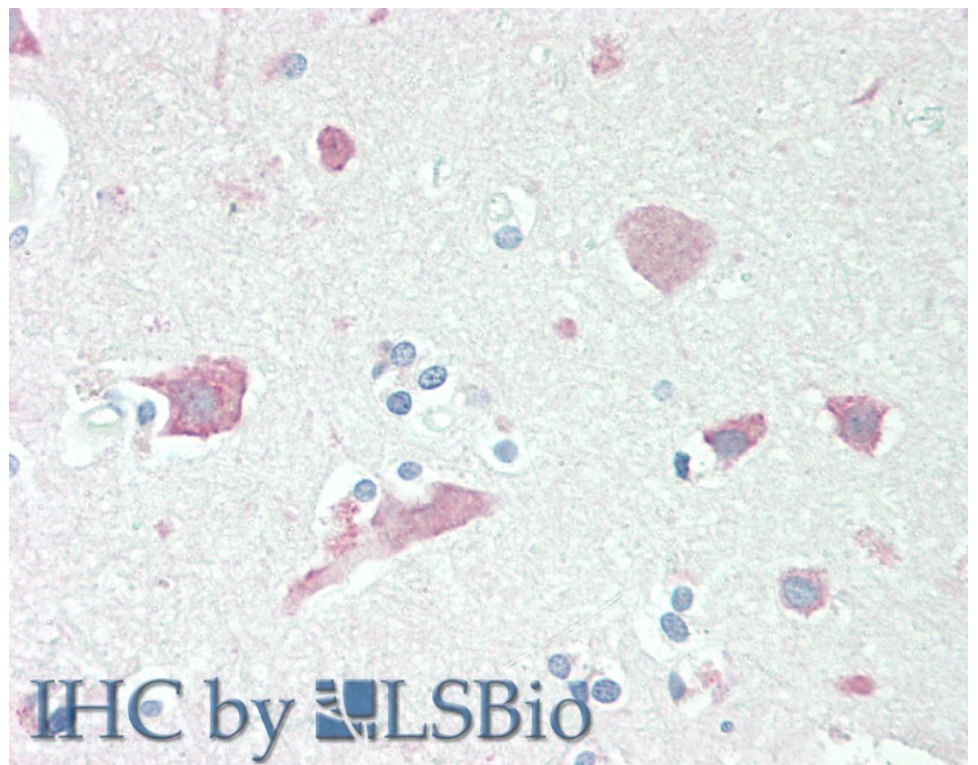
### Species Reactivity

**Tested:** Human

**Expected from sequence similarity:** Human, Mouse, Rat, Pig, Cow



EB06688 (1 $\mu$ g/ml) staining of Human Brain lysate (35 $\mu$ g protein in RIPA buffer). Detected by chemiluminescence.



EB06688 (5 $\mu$ g/ml) staining of paraffin embedded Human Cortex. Steamed antigen retrieval with citrate buffer pH 6, AP-staining.