

## UK Office

### Everest Biotech Ltd

Cherwell Innovation Centre  
77 Heyford Park  
Upper Heyford  
Oxfordshire  
OX25 5HD  
UK

Enquiries:

[info@everestbiotech.com](mailto:info@everestbiotech.com)

Sales:

[sales@everestbiotech.com](mailto:sales@everestbiotech.com)

Tech support:

[support@everestbiotech.com](mailto:support@everestbiotech.com)

Tel: +44 (0)1869 238326

[www.everestbiotech.com](http://www.everestbiotech.com)

**Research Use Only. Not for  
diagnostic or therapeutic use.**

## EB07007 - Goat Anti-Netrin 1 Antibody

Size: 100µg specific antibody in 200µl



### Target Protein

**Principal Names:** netrin 1, HGNC:8029, NTN1, NTN1L, Netrin-1, netrin 1, mouse, homolog of

**Official Symbol:** NTN1

**Accession Number(s):** NP\_004813.2

**Human GeneID(s):** [9423](#)

**Non-Human GeneID(s):** 18208 (mouse), 114523 (rat)

### Immunogen

Peptide with sequence KFQQREKKGKCKKA, from the C Terminus of the protein sequence according to NP\_004813.2.

Please note the [peptide](#) is available for sale.

### Purification and Storage

Purified from goat serum by ammonium sulphate precipitation followed by antigen affinity chromatography using the immunizing peptide.

Supplied at 0.5 mg/ml in Tris saline, 0.02% sodium azide, pH7.3 with 0.5% bovine serum albumin.

Aliquot and store at -20°C. Minimize freezing and thawing.

### Applications Tested

**Peptide ELISA:** antibody detection limit dilution 1:32000.

**Western blot:** Approx. 70kDa band observed in Rat Brain lysates (calculated MW of 67.7kDa according to Human NP\_004813.1 and 67.8kDa according to Rat NP\_446183.1). Recommended concentration: 0.5-1.5µg/ml.

**IHC:** Paraffin embedded Human Intestine. Recommended concentration: 3.75µg/ml.

### Species Reactivity

**Tested:** Human, Rat

**Expected from sequence similarity:** Human, Mouse, Rat, Dog, Cow

### Specific References

**This antibody has been successfully used in Western blot in Human:**

Jayakumar C, Nauta FL, Bakker SJ, Bilo H, Gansevoort RT, Johnson MH, Ramesh G. Netrin-1, a urinary proximal tubular injury marker, is elevated early in the time course of human diabetes.

J Nephrol. 2014 Apr;27(2):151-7.

PMID: 24510764

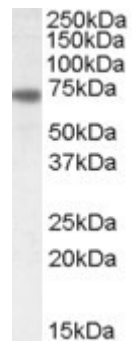
**This antibody has been successfully used in Western blot in Mouse:**

White JJ, Mohamed R, Jayakumar C, Ramesh G.

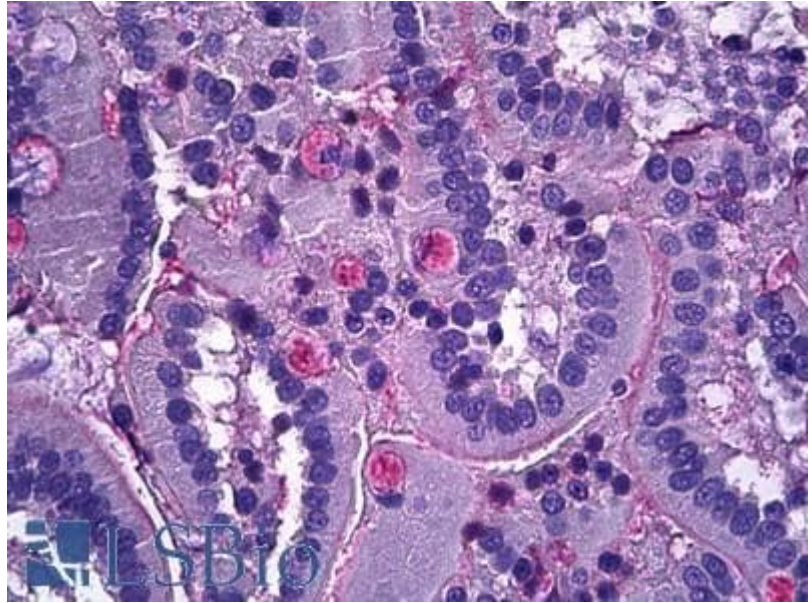
Tubular injury marker netrin-1 is elevated early in experimental diabetes.

J Nephrol. 2013 Nov-Dec;26(6):1055-64.

PMID: 24052471



EB07007 (0.5µg/ml) staining of Rat Brain lysate (35µg protein in RIPA buffer). Primary incubation was 1 hour.  
Detected by chemiluminescence.



EB07007 (3.75µg/ml) staining of paraffin embedded Human Intestine. Steamed antigen retrieval with citrate buffer pH 6, AP-staining.