

## UK Office

### Everest Biotech Ltd

Cherwell Innovation Centre  
77 Heyford Park  
Upper Heyford  
Oxfordshire  
OX25 5HD  
UK

Enquiries:

[info@everestbiotech.com](mailto:info@everestbiotech.com)

Sales:

[sales@everestbiotech.com](mailto:sales@everestbiotech.com)

Tech support:

[support@everestbiotech.com](mailto:support@everestbiotech.com)

Tel: +44 (0)1869 238326

[www.everestbiotech.com](http://www.everestbiotech.com)

**Research Use Only. Not for  
diagnostic or therapeutic use.**

## EB05859 - Goat Anti-NEIL1 / NEH1 Antibody

Size: 100µg specific antibody in 200µl



### Target Protein

**Principal Names:** NEIL1, NEH1, nei endonuclease VIII-like 1 (E. coli), NEI1, FLJ22402, endonuclease VIII, FPG1, hFPG1, nei endonuclease VIII-like 1

**Official Symbol:** NEIL1

**Accession Number(s):** NP\_078884.2

**Human GeneID(s):** [79661](#)

### Immunogen

Peptide with sequence C-DIPSLEPEGTSAS, from the C Terminus of the protein sequence according to NP\_078884.2.

Please note the [peptide](#) is available for sale.

### Purification and Storage

Purified from goat serum by ammonium sulphate precipitation followed by antigen affinity chromatography using the immunizing peptide.

Supplied at 0.5 mg/ml in Tris saline, 0.02% sodium azide, pH7.3 with 0.5% bovine serum albumin.

Aliquot and store at -20°C. Minimize freezing and thawing.

### Applications Tested

**Peptide ELISA:** antibody detection limit dilution 1:16000.

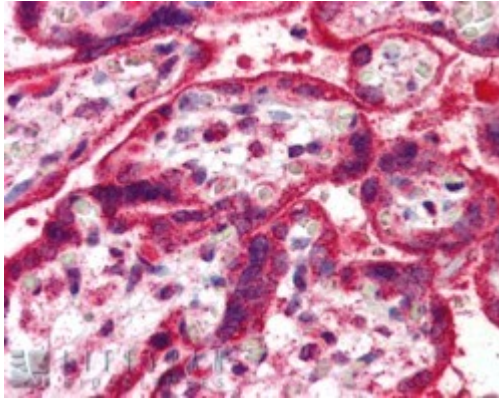
**Western blot:** Preliminary experiments gave an approx 60kDa band in Human Liver and Brain lysates at 1ug/ml. Please note that currently we cannot find an explanation in the literature for the band we observe given the calculated size of 43.7kDa according to NP\_078884.1. We would appreciate any feedback from people in the field - have any results been reported with other antibodies/lysates? Have any further splice variants/modified forms been reported?

**IHC:** In paraffin embedded Human Placenta shows strong staining of cytoplasm in syncytiotrophoblasts. Recommended concentration, 5-10µg/ml.

### Species Reactivity

**Tested:** Human

**Expected from sequence similarity:** Human, Pig, Cow



EB05859 (5µg/ml) staining of paraffin embedded Human Placenta. Steamed antigen retrieval with citrate buffer pH 6, AP-staining.