

UK Office

Everest Biotech Ltd

Cherwell Innovation Centre
77 Heyford Park
Upper Heyford
Oxfordshire
OX25 5HD
UK

Enquiries:

info@everestbiotech.com

Sales:

sales@everestbiotech.com

Tech support:

support@everestbiotech.com

Tel: +44 (0)1869 238326

www.everestbiotech.com

**Research Use Only. Not for
diagnostic or therapeutic use.**

EB10194 - Goat Anti-NDUFS8 Antibody

Size: 100µg specific antibody in 200µl



Target Protein

Principal Names: CI23KD, complex I-23kD, NADH dehydrogenase (ubiquinone) Fe-S protein 8, 23kDa (NADH-coenzyme Q reductase), NADH dehydrogenase ubiquinone Fe-S 8, NADH-ubiquinone oxidoreductase 23 kDa subunit, TYKY, NDUFS8

Official Symbol: NDUFS8

Accession Number(s): NP_002487.1

Human GeneID(s): [4728](#)

Non-Human GeneID(s): 225887 (mouse), 293652 (rat)

Immunogen

Peptide with sequence C-AEPRADGSRR, from the Internal region of the protein sequence according to NP_002487.1.

Please note the [peptide](#) is available for sale.

Purification and Storage

Purified from goat serum by ammonium sulphate precipitation followed by antigen affinity chromatography using the immunizing peptide.

Supplied at 0.5 mg/ml in Tris saline, 0.02% sodium azide, pH7.3 with 0.5% bovine serum albumin.

Aliquot and store at -20°C. Minimize freezing and thawing.

Applications Tested

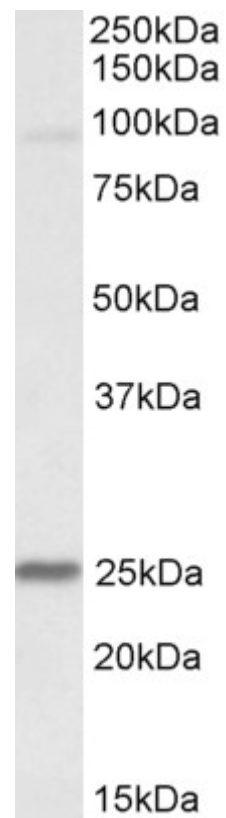
Peptide ELISA: antibody detection limit dilution 1:2000.

Western blot: Approx 25kDa band observed in Human and Mouse Heart lysates (calculated MW of 23.7kDa according to NP_002487.1). Recommended concentration: 0.1-0.3µg/ml. An additional fainter band of 90kDa was consistently observed, however this band was not blocked by the immunizing peptide and it is therefore a non-specific signal. We call for caution when used for other assays than Western blot.

Species Reactivity

Tested: Human, Mouse

Expected from sequence similarity: Human, Mouse, Rat, Dog, Cow



EB10194 (0.1 μ g/ml) staining of Mouse Heart lysate (35 μ g protein in RIPA buffer). Primary incubation was 1 hour.
Detected by chemiluminescence.