

## UK Office

### Everest Biotech Ltd

Cherwell Innovation Centre  
77 Heyford Park  
Upper Heyford  
Oxfordshire  
OX25 5HD  
UK

Enquiries:

[info@everestbiotech.com](mailto:info@everestbiotech.com)

Sales:

[sales@everestbiotech.com](mailto:sales@everestbiotech.com)

Tech support:

[support@everestbiotech.com](mailto:support@everestbiotech.com)

Tel: +44 (0)1869 238326

[www.everestbiotech.com](http://www.everestbiotech.com)

**Research Use Only. Not for  
diagnostic or therapeutic use.**

## EB07895 - Goat Anti-NCF4 / P40PHOX Antibody

Size: 100µg specific antibody in 200µl



### Target Protein

**Principal Names:** NCF4, P40PHOX, neutrophil cytosolic factor 4, 40kDa, CTA-833B7.1, MGC3810, NCF, SH3PXD4, OTTHUMP00000028736, OTTHUMP00000043756, neutrophil NADPH oxidase factor 4, neutrophil cytosol factor 4, neutrophil cytosolic factor 4 (40kD)

**Official Symbol:** NCF4

**Accession Number(s):** NP\_000622.2; NP\_038202.1

**Human GeneID(s):** [4689](#)

**Important Comments:** This antibody is expected to recognise both reported isoforms (NP\_000622.2 and NP\_038202.1).

### Immunogen

Peptide with sequence C-KDFPEEDDPTN, from the internal region of the protein sequence according to NP\_000622.2; NP\_038202.1.

Please note the [peptide](#) is available for sale.

### Purification and Storage

Purified from goat serum by ammonium sulphate precipitation followed by antigen affinity chromatography using the immunizing peptide.

Supplied at 0.5 mg/ml in Tris saline, 0.02% sodium azide, pH7.3 with 0.5% bovine serum albumin.

Aliquot and store at -20°C. Minimize freezing and thawing.

### Applications Tested

**Peptide ELISA:** antibody detection limit dilution 1:32000.

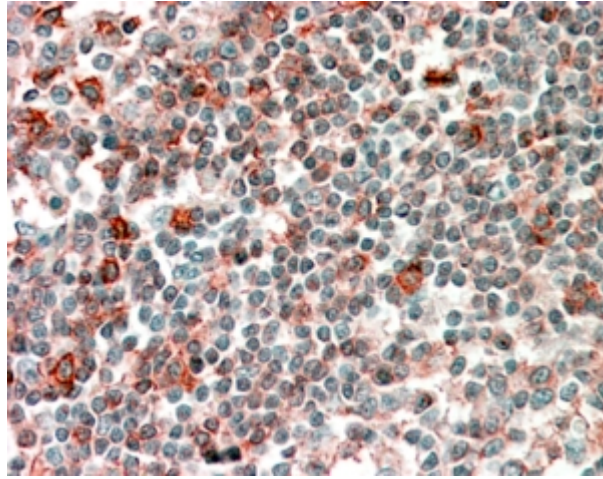
**Western blot:** Approx. 38kDa band observed in lysates of cell line Daudi (calculated MW of 39.0kDa according to NP\_000622.2 and 38.8kDa according to NP\_038202.1). In transfected HEK293 transiently expressing P40PHOX a band of approx. 42kDa is observed. This band is not observed in the non-transfected HEK293. Recommended concentration: 0.3-1µg/ml.

**IHC:** In paraffin embedded Human Tonsil shows staining of the cytoplasm in some cells. Recommended concentration, 2-4µg/ml.

### Species Reactivity

**Tested:** Human

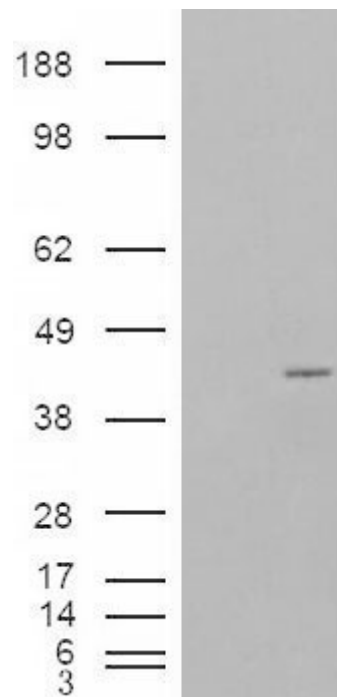
**Expected from sequence similarity:** Human, Dog



EB07895 (2.5µg/ml) staining of paraffin embedded Human Tonsil. Steamed antigen retrieval with citrate buffer pH 6, AP-staining.



EB07895 (0.5µg/ml) staining of Daudi cell lysate (35µg protein in RIPA buffer). Primary incubation was 1 hour. Detected by chemiluminescence.



HEK293 overexpressing P40PHOX (RC201191) and probed with EB07895 (mock transfection in first lane), tested by Origene.