

## UK Office

### Everest Biotech Ltd

Cherwell Innovation Centre  
77 Heyford Park  
Upper Heyford  
Oxfordshire  
OX25 5HD  
UK

Enquiries:

[info@everestbiotech.com](mailto:info@everestbiotech.com)

Sales:

[sales@everestbiotech.com](mailto:sales@everestbiotech.com)

Tech support:

[support@everestbiotech.com](mailto:support@everestbiotech.com)

Tel: +44 (0)1869 238326

[www.everestbiotech.com](http://www.everestbiotech.com)

**Research Use Only. Not for  
diagnostic or therapeutic use.**

## EB06991 - Goat Anti-NCAM2 / OCAM Antibody

Size: 100µg specific antibody in 200µl



### Target Protein

**Principal Names:** NCAM2, neural cell adhesion molecule 2, HGNC:7657, MGC51008, NCAM21, OCAM

**Official Symbol:** NCAM2

**Accession Number(s):** NP\_004531.2

**Human GeneID(s):** [4685](#)

**Non-Human GeneID(s):** 17968 (mouse), 288280 (rat)

### Immunogen

Peptide with sequence C-KVSNDIIQSKEDDSK, from the C Terminus of the protein sequence according to NP\_004531.2.

Please note the [peptide](#) is available for sale.

### Purification and Storage

Purified from goat serum by ammonium sulphate precipitation followed by antigen affinity chromatography using the immunizing peptide.

Supplied at 0.5 mg/ml in Tris saline, 0.02% sodium azide, pH7.3 with 0.5% bovine serum albumin.

Aliquot and store at -20°C. Minimize freezing and thawing.

### Applications Tested

**Peptide ELISA:** antibody detection limit dilution 1:4000.

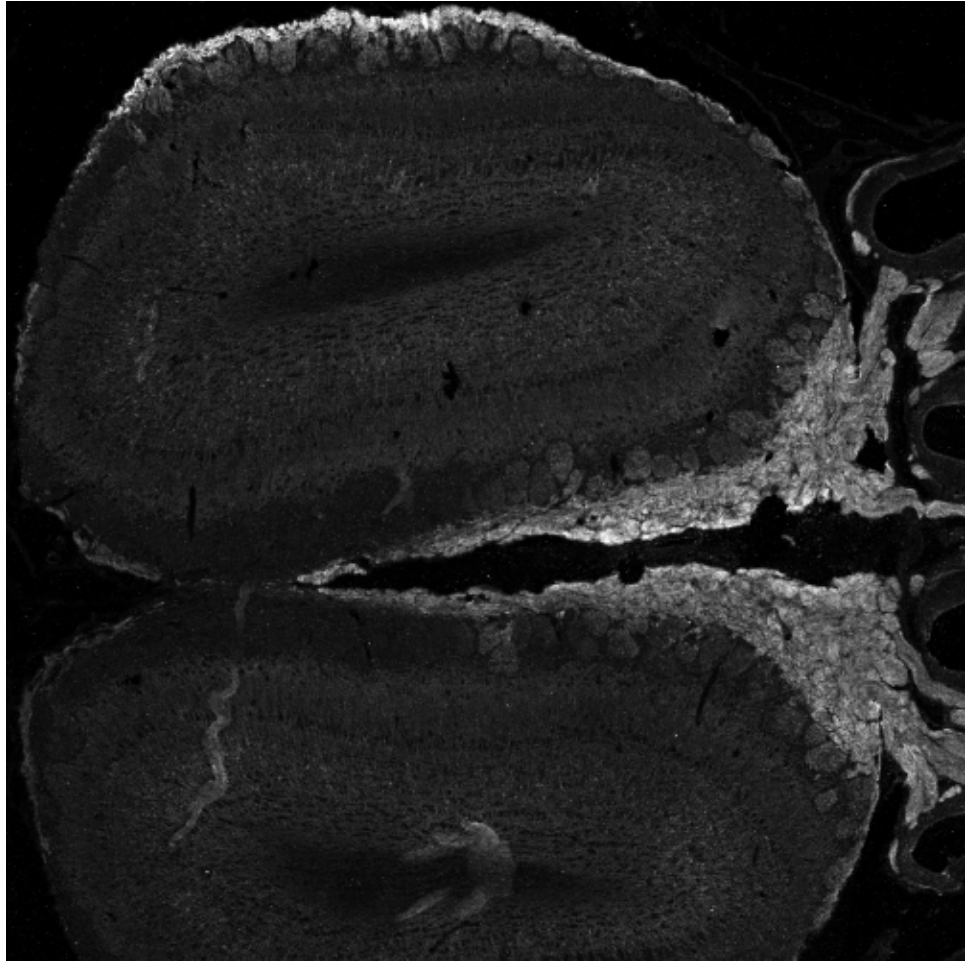
**Western blot:** Preliminary experiments gave an approx 150 and 28kDa bands in Human and Mouse Brain lysates after 0.1µg/ml antibody staining. Please note that currently we cannot find an explanation in the literature for the band we observe given the calculated size of 93.0kDa according to NP\_004531.2. Both observed bands were successfully blocked by incubation with the immunizing peptide.

**IHC:** Frozen section of Olfactory bulb from transcardially PFA-perfused Mouse shows strong staining of axon bundles (right side middle, figure 1) and moderate peripheral staining outside the glomeruli (top, figure 1). NCAM2 (red) is stained complementary to VGLUT2 (blue) and NQO1 (green) in figure 2. Recommended concentration: 0.5µg/ml. Paraffin embedded Human Brain (Cortex). Recommended concentration: 3.75ug/ml.

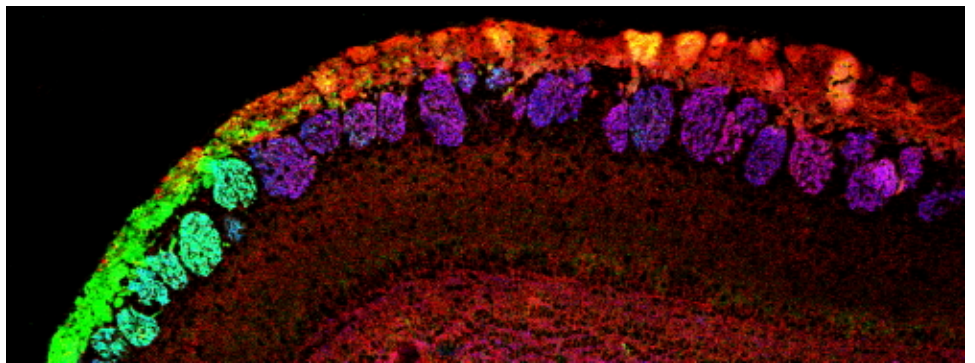
### Species Reactivity

**Tested:** Human, Mouse

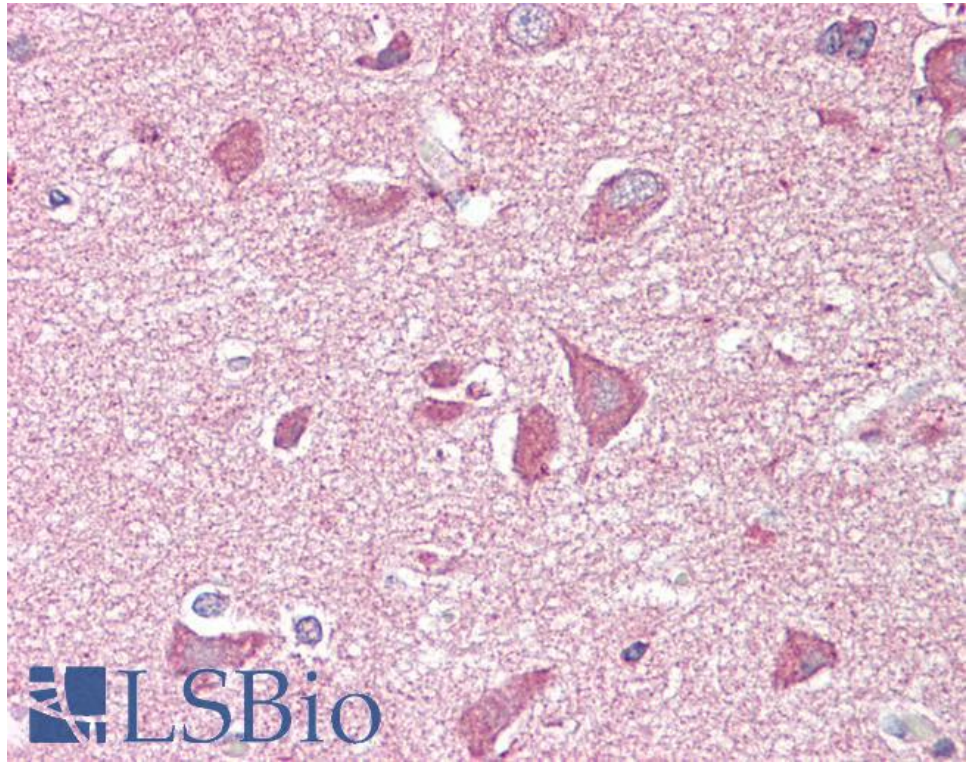
**Expected from sequence similarity:** Human, Mouse, Rat, Dog, Cow



EB06991 (0.5 $\mu$ g/ml) 24h-staining of PFA-perfused cryosection of Mouse Olfactory bub. Antigen retrieval with methanol (-20C, 10min) followed by 1% SDS(10min), IF-staining. Data obtained from customer.



EB06991 (0.5 $\mu$ g/ml) 48h-staining of PFA-perfused cryosection of Mouse Olfactory bulb. Antigen retrieval with citrate buffer pH 6 at 95C for 10min, IF-staining for NCAM2 (red), VGLUT2 (blue) and NQO1 (green), data obtained from customer.



EB06991 (3.75µg/ml) staining of paraffin embedded Human Cortex. Steamed antigen retrieval with citrate buffer pH 6, AP-staining.