

UK Office

Everest Biotech Ltd

Cherwell Innovation Centre
77 Heyford Park
Upper Heyford
Oxfordshire
OX25 5HD
UK

Enquiries:

info@everestbiotech.com

Sales:

sales@everestbiotech.com

Tech support:

support@everestbiotech.com

Tel: +44 (0)1869 238326

www.everestbiotech.com

**Research Use Only. Not for
diagnostic or therapeutic use.**

EB07698 - Goat Anti-NAT10 / hALP Antibody

Size: 100µg specific antibody in 200µl



Target Protein

Principal Names: NAT10, N-acetyltransferase 10, ALP, DKFZp434C116, FLJ10774, FLJ12179, FLJ23850, KIAA1709, hALP, N-acetyltransferase-like, N-acetyltransferase-like protein

Official Symbol: NAT10

Accession Number(s): NP_078938.1

Human GeneID(s): [55226](#)

Non-Human GeneID(s): 98956 (mouse)

Immunogen

Peptide with sequence C-KSDKKRRKLEAKQ, from the internal region (near the C Terminus) of the protein sequence according to NP_078938.1.

Please note the [peptide](#) is available for sale.

Purification and Storage

Purified from goat serum by ammonium sulphate precipitation followed by antigen affinity chromatography using the immunizing peptide.

Supplied at 0.5 mg/ml in Tris saline, 0.02% sodium azide, pH7.3 with 0.5% bovine serum albumin.

Aliquot and store at -20°C. Minimize freezing and thawing.

Applications Tested

Peptide ELISA: antibody detection limit dilution 1:64000.

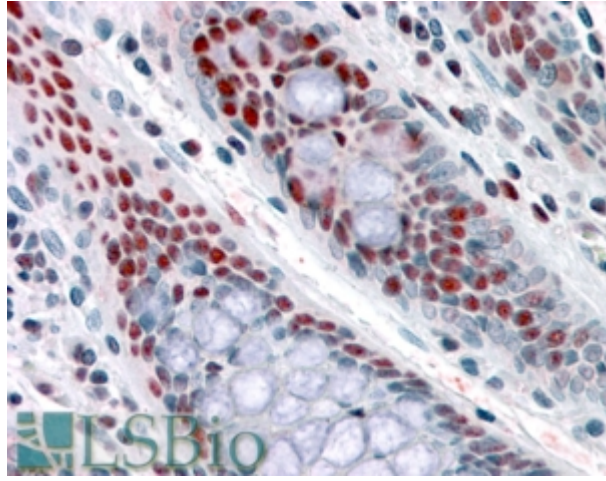
Western blot: Preliminary experiments gave an approx 26kDa band in Human Brain (Cerebellum, Frontal Cortex and Hippocampus) lysates after 0.01µg/ml antibody staining. Please note that currently we cannot find an explanation in the literature for the band we observe given the calculated size of 116kDa according to NP_078938.1. The 26kDa band was successfully blocked by incubation with the immunizing peptide. We would appreciate any feedback from people in the field - have any results been reported with other antibodies/lysates? Have any further splice variants/modified forms been reported?

IHC: In paraffin embedded Human Colon shows nuclear staining in absorptive cells. Recommended concentration, 3-6µg/ml.

Species Reactivity

Tested: Human

Expected from sequence similarity: Human, Mouse, Rat, Dog



EB07698 (3.8µg/ml) staining of paraffin embedded Human Colon. Steamed antigen retrieval with citrate buffer pH 6, AP-staining.