

## UK Office

### Everest Biotech Ltd

Cherwell Innovation Centre  
77 Heyford Park  
Upper Heyford  
Oxfordshire  
OX25 5HD  
UK

Enquiries:

[info@everestbiotech.com](mailto:info@everestbiotech.com)

Sales:

[sales@everestbiotech.com](mailto:sales@everestbiotech.com)

Tech support:

[support@everestbiotech.com](mailto:support@everestbiotech.com)

Tel: +44 (0)1869 238326

[www.everestbiotech.com](http://www.everestbiotech.com)

**Research Use Only. Not for  
diagnostic or therapeutic use.**

## EB09876 - Goat Anti-NALP2 / PAN1 Antibody

Size: 100µg specific antibody in 200µl



### Target Protein

**Principal Names:** CLR19.9, FLJ20510, NACHT, leucine rich repeat and PYD containing 2, NACHT, LRR and PYD containing protein 2, NALP2, NBS1, NLR family, pyrin domain containing 2, nucleotide-binding oligomerization domain, I, PAN1, PYPAF2, PYRIN-Containing APAF1-like, NLRP2

**Official Symbol:** NLRP2

**Accession Number(s):** NP\_060322.1

**Human GeneID(s):** [55655](#)

### Immunogen

Peptide with sequence C-KNPQLIIDTEKHHP, from the C Terminus (near) of the protein sequence according to NP\_060322.1.

Please note the [peptide](#) is available for sale.

### Purification and Storage

Purified from goat serum by ammonium sulphate precipitation followed by antigen affinity chromatography using the immunizing peptide.

Supplied at 0.5 mg/ml in Tris saline, 0.02% sodium azide, pH7.3 with 0.5% bovine serum albumin.

Aliquot and store at -20°C. Minimize freezing and thawing.

### Applications Tested

**Peptide ELISA:** antibody detection limit dilution 1:16000.

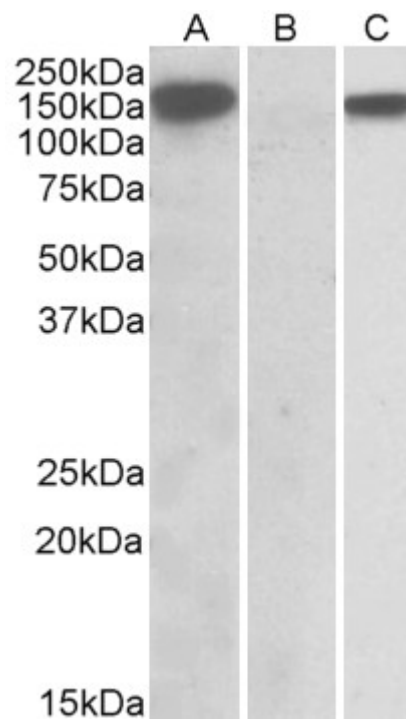
**Western blot:** In transfected HEK293 transiently expressing full-length Human NLRP2 (myc and DYKDDDDK tagged), a band of approx. 150kDa was observed. No bands were observed in mock-transfected HEK293 and the same band was observed using anti-DYKDDDDK tag antibody. Recommended concentration, 1-2ug/ml.

Purchase the +ve control! The transfected lysate used in QC is available for sale. Please email [sales@everestbiotech.com](mailto:sales@everestbiotech.com) to request datasheet, pricing and delivery information.

### Species Reactivity

**Tested:** Human

**Expected from sequence similarity:** Human



HEK293 lysate (10ug protein in RIPA buffer) overexpressing Human NLRP2 with DYKDDDDK tag probed with EB09876 (1ug/ml) in Lane A and probed with anti- DYKDDDDK Tag (1/5000) in lane C. Mock-transfected HEK293 probed with EB09876 (1mg/ml) in Lane B. Primary incubations were for 1 hour. Detected by chemiluminescence.