

UK Office

Everest Biotech Ltd

Cherwell Innovation Centre
77 Heyford Park
Upper Heyford
Oxfordshire
OX25 5HD
UK

Enquiries:

info@everestbiotech.com

Sales:

sales@everestbiotech.com

Tech support:

support@everestbiotech.com

Tel: +44 (0)1869 238326

www.everestbiotech.com

**Research Use Only. Not for
diagnostic or therapeutic use.**

EB10549 - Goat Anti-MYO1B Antibody

Size: 100µg specific antibody in 200µl



Target Protein

Principal Names: MYO1B, myosin IB, myr1, MMI-alpha, MMla, MYH-1c, MYO1B variant protein, OTTHUMP00000165861, myosin I alpha, myosin-Ib

Official Symbol: MYO1B

Accession Number(s): NP_001123630.1; NP_036355.2

Human GeneID(s): [4430](#)

Non-Human GeneID(s): 17912 (mouse), 117057 (rat)

Important Comments: This antibody is expected to recognize both reported isoforms (NP_001123630.1; NP_036355.2). Reported variants represent identical protein: NP_001123630.1, NP_001155291.1.

Immunogen

Peptide with sequence C-RTVEAKQEKVSTT, from the internal region of the protein sequence according to NP_001123630.1; NP_036355.2.

Please note the [peptide](#) is available for sale.

Purification and Storage

Purified from goat serum by ammonium sulphate precipitation followed by antigen affinity chromatography using the immunizing peptide.

Supplied at 0.5 mg/ml in Tris saline, 0.02% sodium azide, pH7.3 with 0.5% bovine serum albumin.

Aliquot and store at -20°C. Minimize freezing and thawing.

Applications Tested

Peptide ELISA: antibody detection limit dilution 1:16000.

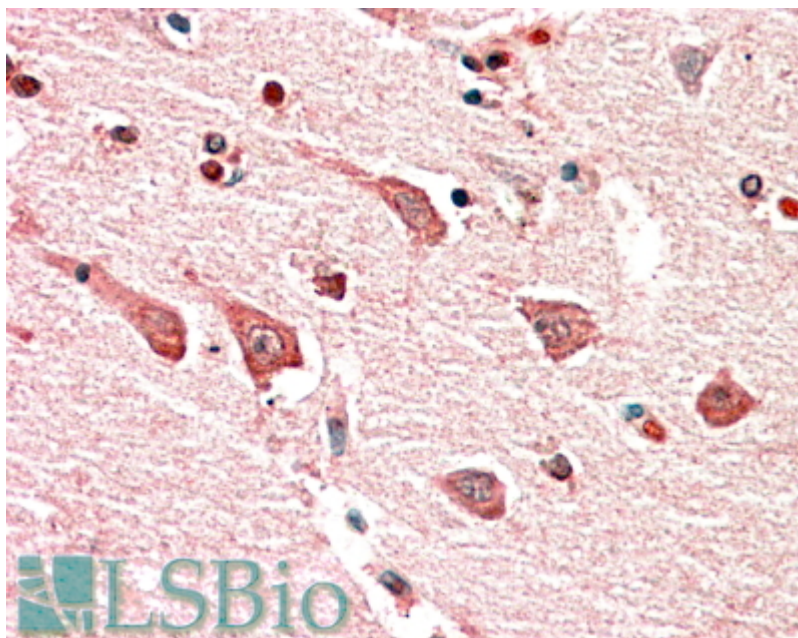
Western blot: Approx 120kDa band observed in lysates of cell line NIH3T3 (calculated MW of 125kDa according to Human NP_036355.2 and 128kDa according to Mouse NP_034993.2). Recommended concentration: 1-3µg/ml.

IHC: In paraffin embedded Human Cerebral Cortex shows cytoplasm staining in the neuronal bodies. Recommended concentration, 5-10µg/ml.

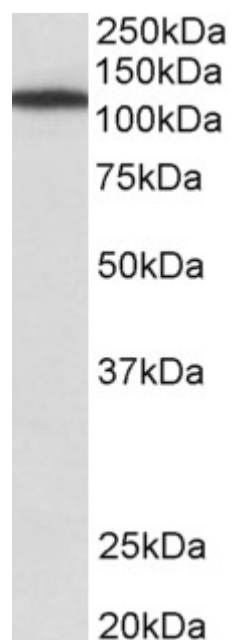
Species Reactivity

Tested: Human, Mouse

Expected from sequence similarity: Human, Mouse, Rat, Dog, Cow



EB10549 (5µg/ml) staining of paraffin embedded Human Cerebral Cortex. Steamed antigen retrieval with citrate buffer pH 6, AP-staining.



EB10549 (1µg/ml) staining of NIH3T3 lysate (35µg protein in RIPA buffer). Primary incubation was 1 hour. Detected by chemiluminescence.