



## UK Office

### Everest Biotech Ltd

Cherwell Innovation Centre  
77 Heyford Park  
Upper Heyford  
Oxfordshire  
OX25 5HD  
UK

Enquiries:

[info@everestbiotech.com](mailto:info@everestbiotech.com)

Sales:

[sales@everestbiotech.com](mailto:sales@everestbiotech.com)

Tech support:

[support@everestbiotech.com](mailto:support@everestbiotech.com)

Tel: +44 (0)1869 238326

[www.everestbiotech.com](http://www.everestbiotech.com)

**Research Use Only. Not for  
diagnostic or therapeutic use.**

## EB06667-B - Goat Anti-MYD88, Biotinylated Antibody

Size: 100µg specific antibody in 200µl



### Target Protein

**Principal Names:** MYD88, myeloid differentiation primary response 88, MYD88D, myeloid differentiation primary response gene (88)

**Official Symbol:** MYD88

**Accession Number(s):** NP\_001166038.1; NP\_002459.2; NP\_001166039.1

**Human GeneID(s):** [4615](#)

**Non-Human GeneID(s):** 17874 (mouse), 301059 (rat)

**Important Comments:** This antibody is expected to recognize reported isoforms 1, 2 and 3 (NP\_001166038.1; NP\_002459.2; NP\_001166039.1).

### Immunogen

Peptide with sequence C-IKYKAMKKEFP., from the internal region of the protein sequence according to NP\_001166038.1; NP\_002459.2; NP\_001166039.1.

Please note the [peptide](#) is available for sale.

### Purification and Storage

Purified from goat serum by ammonium sulphate precipitation followed by antigen affinity chromatography using the immunizing peptide.

Supplied at 0.5 mg/ml in Tris saline, 0.02% sodium azide, pH7.3 with 0.5% bovine serum albumin.

Aliquot and store at -20°C. Minimize freezing and thawing.

### Applications Tested

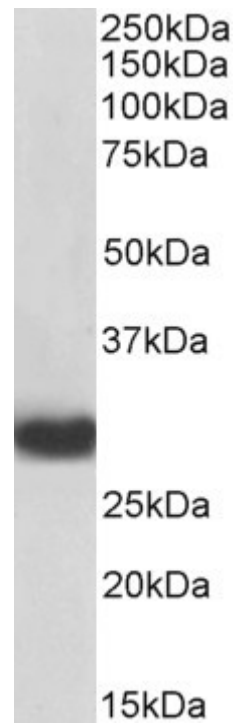
**Peptide ELISA:** antibody detection limit dilution 1:16000.

**Western blot:** Approx 33kDa band observed in Human Thymus lysates (calculated MW of 33.2kDa according to NP\_002459.1). See non-biotinylated parental product's datasheet for further QC data. Recommended concentration: 0.1-0.3µg/ml.

### Species Reactivity

**Tested:** Human

**Expected from sequence similarity:** Human



Biotinylated EB06667 (0.2 $\mu$ g/ml) staining of Human Thymus lysate (35 $\mu$ g protein in RIPA buffer), exactly mirroring its parental non-biotinylated product. Primary incubation was 1 hour. Detected by chemiluminescence, using streptavidin-HRP and using NAP blocker as a substitute for skimmed milk.