

UK Office

Everest Biotech Ltd

Cherwell Innovation Centre
77 Heyford Park
Upper Heyford
Oxfordshire
OX25 5HD
UK

Enquiries:

info@everestbiotech.com

Sales:

sales@everestbiotech.com

Tech support:

support@everestbiotech.com

Tel: +44 (0)1869 238326

www.everestbiotech.com

**Research Use Only. Not for
diagnostic or therapeutic use.**

EB05189 - Goat Anti-MTMR9 (C Terminus) Antibody

Size: 100µg specific antibody in 200µl



Target Protein

Principal Names: MTMR9, myotubularin related protein 9, MTMR8, C8orf9, LIP-STYX, DKFZP434K171, DKFZp434K171, myotubularin related protein 8, MGC126672, myotubularin-related protein 9, myotubularin-related protein 9 variant

Official Symbol: MTMR9

Accession Number(s): NP_056273.2

Human GeneID(s): [66036](#)

Immunogen

Peptide with sequence C-AELETEDGMQESP, from the C Terminus of the protein sequence according to NP_056273.2.

Please note the [peptide](#) is available for sale.

Purification and Storage

Purified from goat serum by ammonium sulphate precipitation followed by antigen affinity chromatography using the immunizing peptide.

Supplied at 0.5 mg/ml in Tris saline, 0.02% sodium azide, pH7.3 with 0.5% bovine serum albumin.

Aliquot and store at -20°C. Minimize freezing and thawing.

Applications Tested

Peptide ELISA: antibody detection limit dilution 1:8000.

Western blot: No signal obtained yet but low background observed in Human Brain and Kidney lysates at up to 1µg/ml. We would appreciate any feedback from people in the field - have any results been reported with other antibodies/lysates?

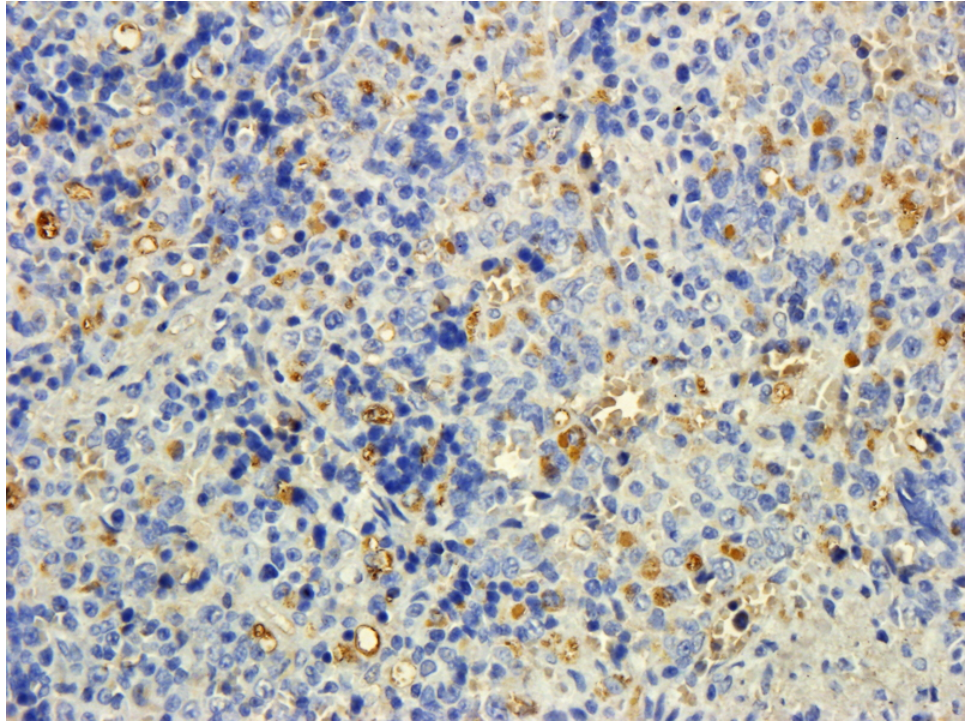
IHC: In paraffin embedded Rat Spleen shows staining of cytoplasm in select cells.

Recommended concentration, 5-10µg/ml. This product has also been successfully used on Rat Hypothalamus.

Species Reactivity

Tested: Rat

Expected from sequence similarity: Human, Mouse, Rat, Dog, Pig, Cow



EB05189 (5ug/ml) staining of paraffin embedded Rat Spleen. Steamed antigen retrieval with citrate buffer pH 6, DAB-staining.