



## UK Office

### Everest Biotech Ltd

Cherwell Innovation Centre  
77 Heyford Park  
Upper Heyford  
Oxfordshire  
OX25 5HD  
UK

Enquiries:

[info@everestbiotech.com](mailto:info@everestbiotech.com)

Sales:

[sales@everestbiotech.com](mailto:sales@everestbiotech.com)

Tech support:

[support@everestbiotech.com](mailto:support@everestbiotech.com)

Tel: +44 (0)1869 238326

[www.everestbiotech.com](http://www.everestbiotech.com)

**Research Use Only. Not for  
diagnostic or therapeutic use.**

## EB05053 - Goat Anti-MSC / ABF1 Antibody

Size: 100µg specific antibody in 200µl



### Target Protein

**Principal Names:** MSC, muscudin (activated B-cell factor-1), ABF1, MYOR, ABF-1, muscudin, activated B-cell factor-1, activated B-cell factor 1, homolog of mouse muscudin, bHLHa22

**Official Symbol:** MSC

**Accession Number(s):** AAC15071.1

**Human GeneID(s):** [9242](#)

### Immunogen

Peptide with sequence C-PLKSDWNSLDGIIR, from the C Terminus of the protein sequence according to AAC15071.1.

Please note the [peptide](#) is available for sale.

### Purification and Storage

Purified from goat serum by ammonium sulphate precipitation followed by antigen affinity chromatography using the immunizing peptide.

Supplied at 0.5 mg/ml in Tris saline, 0.02% sodium azide, pH7.3 with 0.5% bovine serum albumin.

Aliquot and store at -20°C. Minimize freezing and thawing.

### Applications Tested

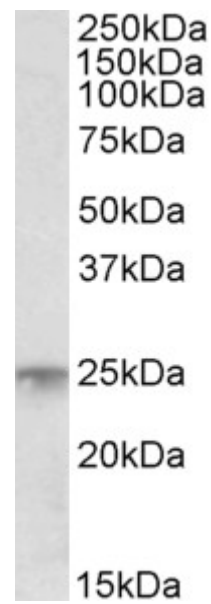
**Peptide ELISA:** antibody detection limit dilution 1:32000.

**Western blot:** Approx 25kDa band observed in Human Bone Marrow lysates (calculated MW of 23.6kDa according to AAC15071.1). Recommended concentration: 1-3µg/ml.

### Species Reactivity

**Tested:**

**Expected from sequence similarity:** Human



EB05053 (1µg/ml) staining of Human Bone Marrow lysate (35µg protein in RIPA buffer). Primary incubation was 1 hour. Detected by chemiluminescence.