

UK Office

Everest Biotech Ltd

Cherwell Innovation Centre
77 Heyford Park
Upper Heyford
Oxfordshire
OX25 5HD
UK

Enquiries:

info@everestbiotech.com

Sales:

sales@everestbiotech.com

Tech support:

support@everestbiotech.com

Tel: +44 (0)1869 238326

www.everestbiotech.com

**Research Use Only. Not for
diagnostic or therapeutic use.**

EB05399 - Goat Anti-MS2 / ADAM8 / CD156 Antibody

Size: 100µg specific antibody in 200µl



Target Protein

Principal Names: ADAM8, CD156, a disintegrin and metalloproteinase domain 8, CD156 MS2, ADAM metalloproteinase domain 8, MGC134985, MS2, cell surface antigen MS2, disintegrin and metalloproteinase domain-containing protein 8, human leukocyte differentiation antigen

Official Symbol: ADAM8

Accession Number(s): NP_001100.3; NP_001157962.1

Human GeneID(s): [101](#)

Non-Human GeneID(s): 11501 (mouse)

Important Comments: This antibody is expected to recognise isoform 1 and 3 (NP_001100.3; NP_001157962.1).

Immunogen

Peptide with sequence C-QRKQGAGAPTAP, from the C Terminus of the protein sequence according to NP_001100.3; NP_001157962.1.

Please note the [peptide](#) is available for sale.

Purification and Storage

Purified from goat serum by ammonium sulphate precipitation followed by antigen affinity chromatography using the immunizing peptide.

Supplied at 0.5 mg/ml in Tris saline, 0.02% sodium azide, pH7.3 with 0.5% bovine serum albumin.

Aliquot and store at -20°C. Minimize freezing and thawing.

Applications Tested

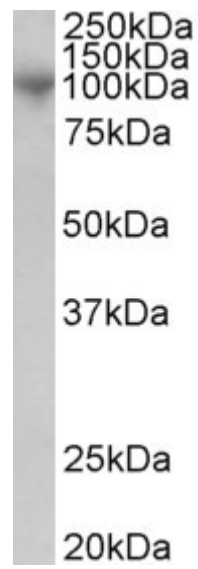
Peptide ELISA: antibody detection limit dilution 1:16000.

Western blot: Approx 100kDa band observed in Human Bone Marrow and Peripheral Blood Mononucleocytes lysates (calculated MW of 88.8kDa according to NP_001100.3). Recommended concentration: 1-3µg/ml.

Species Reactivity

Tested: Human

Expected from sequence similarity: Human



EB05399 (1µg/ml) staining of Human Bone Marrow lysate (35µg protein in RIPA buffer). Primary incubation was 1 hour. Detected by chemiluminescence.