

## UK Office

### Everest Biotech Ltd

Cherwell Innovation Centre  
77 Heyford Park  
Upper Heyford  
Oxfordshire  
OX25 5HD  
UK

Enquiries:

[info@everestbiotech.com](mailto:info@everestbiotech.com)

Sales:

[sales@everestbiotech.com](mailto:sales@everestbiotech.com)

Tech support:

[support@everestbiotech.com](mailto:support@everestbiotech.com)

Tel: +44 (0)1869 238326

[www.everestbiotech.com](http://www.everestbiotech.com)

**Research Use Only. Not for  
diagnostic or therapeutic use.**

## EB05399-T - Goat Anti-MS2 / ADAM8 / CD156 Antibody - Trial

Size: 20µg specific antibody in 40µl



### Target Protein

**Principal Names:** ADAM8, CD156, a disintegrin and metalloproteinase domain 8, CD156 MS2, ADAM metalloproteinase domain 8, MGC134985, MS2, cell surface antigen MS2, disintegrin and metalloproteinase domain-containing protein 8, human leukocyte differentiation antigen

**Official Symbol:** ADAM8

**Accession Number(s):** NP\_001100.3; NP\_001157962.1

**Human GeneID(s):** [101](#)

**Non-Human GeneID(s):** 11501 (mouse)

**Important Comments:** This antibody is expected to recognise isoform 1 and 3 (NP\_001100.3; NP\_001157962.1).

### Immunogen

Peptide with sequence C-QRKQGAGAPTAP, from the C Terminus of the protein sequence according to NP\_001100.3; NP\_001157962.1.

Please note the [peptide](#) is available for sale.

### Purification and Storage

Purified from goat serum by ammonium sulphate precipitation followed by antigen affinity chromatography using the immunizing peptide.

Supplied at 0.5 mg/ml in Tris saline, 0.02% sodium azide, pH7.3 with 0.5% bovine serum albumin.

Aliquot and store at -20°C. Minimize freezing and thawing.

### Applications Tested

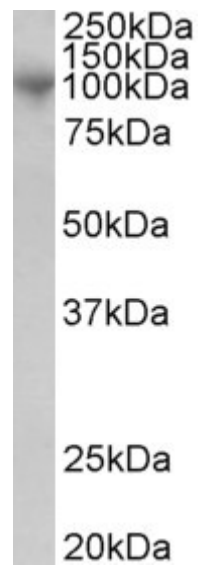
**Peptide ELISA:** antibody detection limit dilution 1:16000.

**Western blot:** Approx 100kDa band observed in Human Bone Marrow and Peripheral Blood Mononucleocytes lysates (calculated MW of 88.8kDa according to NP\_001100.3). Recommended concentration: 1-3µg/ml.

### Species Reactivity

**Tested:** Human

**Expected from sequence similarity:** Human



EB05399 (1µg/ml) staining of Human Bone Marrow lysate (35µg protein in RIPA buffer). Primary incubation was 1 hour. Detected by chemiluminescence.