

UK Office

Everest Biotech Ltd

Cherwell Innovation Centre
77 Heyford Park
Upper Heyford
Oxfordshire
OX25 5HD
UK

Enquiries:

info@everestbiotech.com

Sales:

sales@everestbiotech.com

Tech support:

support@everestbiotech.com

Tel: +44 (0)1869 238326

www.everestbiotech.com

**Research Use Only. Not for
diagnostic or therapeutic use.**

EB08699 - Goat Anti-MRP5 Antibody

Size: 100µg specific antibody in 200µl



Target Protein

Principal Names: MRP5, DKFZp686C1782, ABCC5, ATP-binding cassette, sub-family C (CFTR/MRP), member 5, ABC33, EST277145, MOAT-C, MOATC, SMRP, pABC11, ATP-binding cassette, sub-family C, member 5, canalicular multispecific organic anion transporter C

Official Symbol: ABCC5

Accession Number(s): NP_005679.2; NP_001018881.1

Human GeneID(s): [10057](#)

Non-Human GeneID(s): 27416 (mouse), 116721 (rat)

Important Comments: This antibody is expected to recognize both reported isoforms (NP_005679.2; NP_001018881.1).

Immunogen

Peptide with sequence KDIDIGKEYIIP-C, from the N Terminus of the protein sequence according to NP_005679.2; NP_001018881.1.

Please note the [peptide](#) is available for sale.

Purification and Storage

Purified from goat serum by ammonium sulphate precipitation followed by antigen affinity chromatography using the immunizing peptide.

Supplied at 0.5 mg/ml in Tris saline, 0.02% sodium azide, pH7.3 with 0.5% bovine serum albumin.

Aliquot and store at -20°C. Minimize freezing and thawing.

Applications Tested

Peptide ELISA: antibody detection limit dilution 1:32000.

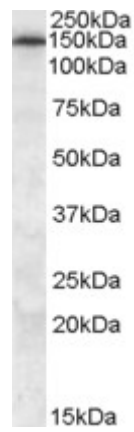
Western blot: Approx. 150kDa band observed in Human Brain (Frontal Cortex) lysates (calculated MW of 161kDa according to NP_005679.2). Recommended concentration: 0.5-1.5µg/ml.

IHC: In paraffin embedded Human Kidney shows membranous staining in DCT. Paraffin embedded Human Liver. Recommended concentration: 4-6µg/ml.

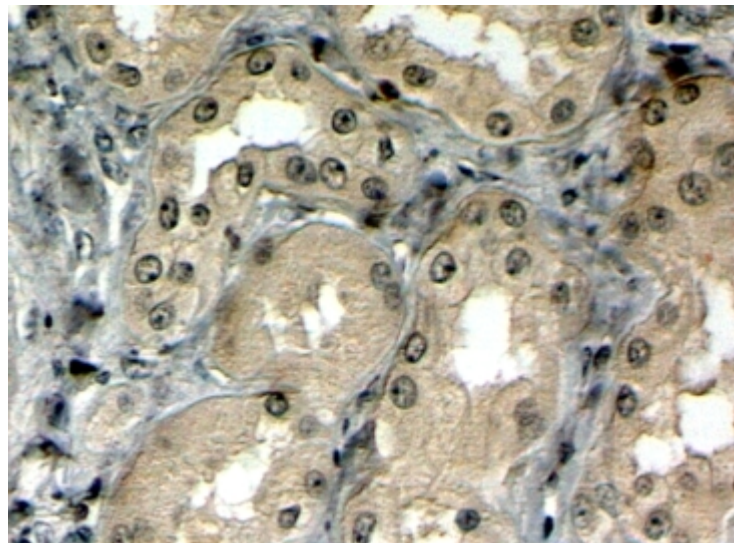
Species Reactivity

Tested: Human

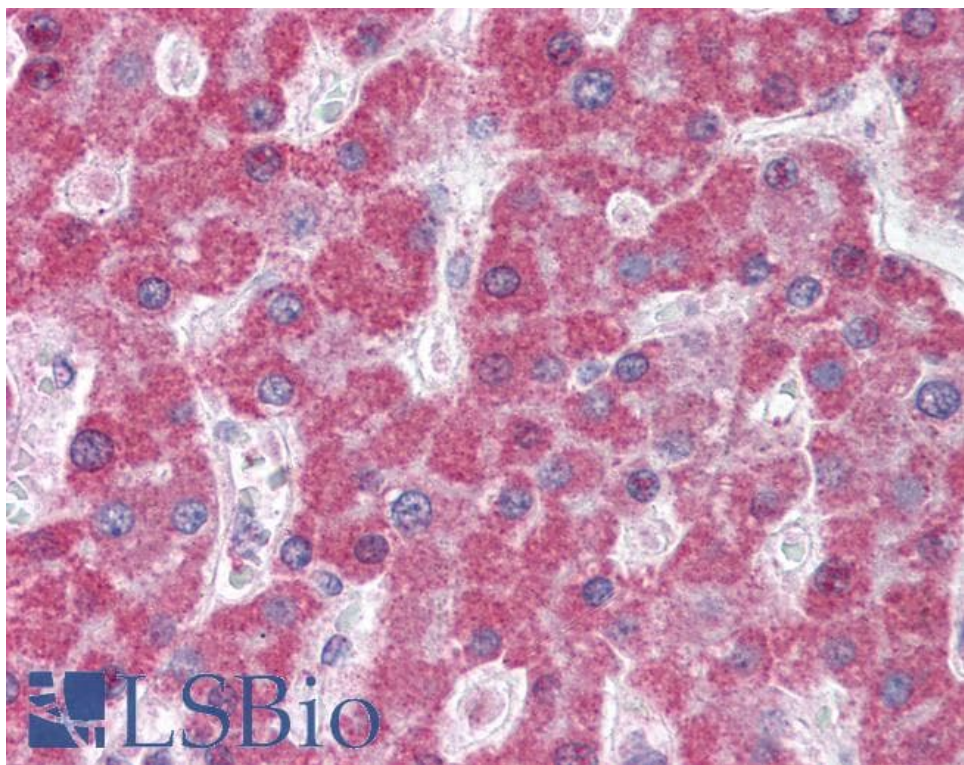
Expected from sequence similarity: Human, Mouse, Rat, Dog, Pig, Cow



EB08699 (0.5µg/ml) staining of Human Frontal Cortex lysate (35µg protein in RIPA buffer). Primary incubation was 1 hour. Detected by chemiluminescence.



EB08699 (4µg/ml) staining of paraffin embedded Human Kidney. Steamed antigen retrieval with citrate buffer pH 6, HRP-staining. Similar results with antigen retrieval at pH9.



EB08699 (5µg/ml) staining of paraffin embedded Human Liver. Steamed antigen retrieval with citrate buffer pH 6, AP-staining.