

## UK Office

### Everest Biotech Ltd

Cherwell Innovation Centre  
77 Heyford Park  
Upper Heyford  
Oxfordshire  
OX25 5HD  
UK

Enquiries:

[info@everestbiotech.com](mailto:info@everestbiotech.com)

Sales:

[sales@everestbiotech.com](mailto:sales@everestbiotech.com)

Tech support:

[support@everestbiotech.com](mailto:support@everestbiotech.com)

Tel: +44 (0)1869 238326

[www.everestbiotech.com](http://www.everestbiotech.com)

**Research Use Only. Not for  
diagnostic or therapeutic use.**

## EB06079 - Goat Anti-MRG15 / MORF4L1 Antibody

Size: 100µg specific antibody in 200µl



### Target Protein

**Principal Names:** MORF4L1, MRG15, MORF-related gene 15 protein, mortality factor 4 like 1, Eaf3, FWP006, HsT17725, MEAF3, MGC10631, MORFRG15, Esa1p-associated factor 3 homolog, MORF-related gene on chromosome 15, protein MSL3-1, S863-6, transcription factor-like protein MRG15

**Official Symbol:** MORF4L1

**Accession Number(s):** NP\_006782.1; NP\_996670.1

**Human GeneID(s):** [10933](#)

**Non-Human GeneID(s):** 21761 (mouse)

**Important Comments:** This antibody is expected to recognise isoform 1 (NP\_006782.1) and isoform 2 (NP\_996670.1).

### Immunogen

Peptide with sequence APKQDPKPKFQEG-C, from the N Terminus of the protein sequence according to NP\_006782.1; NP\_996670.1.

Please note the [peptide](#) is available for sale.

### Purification and Storage

Purified from goat serum by ammonium sulphate precipitation followed by antigen affinity chromatography using the immunizing peptide.

Supplied at 0.5 mg/ml in Tris saline, 0.02% sodium azide, pH7.3 with 0.5% bovine serum albumin.

Aliquot and store at -20°C. Minimize freezing and thawing.

### Applications Tested

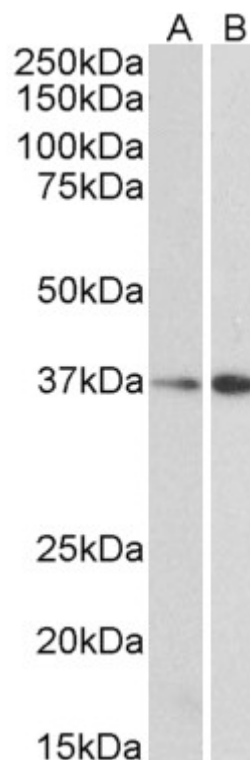
**Peptide ELISA:** antibody detection limit dilution 1:128000.

**Western blot:** Approx 37kDa band observed in nuclear lysates of cell lines HepG2 and NIH3T3 and approx 40kDa band observed in Mouse, Rat and Pig Liver lysates (calculated MW of 37.2kDa according to Human NP\_006782.1, Mouse NP\_077751.1, Rat NP\_001011999.1 and Pig XP\_001927776.1 and 41.5kDa according to Human NP\_996670.1, Mouse NP\_001034236.1 and Pig XP\_001927789.1). Recommended concentration: 0.1-0.3µg/ml.

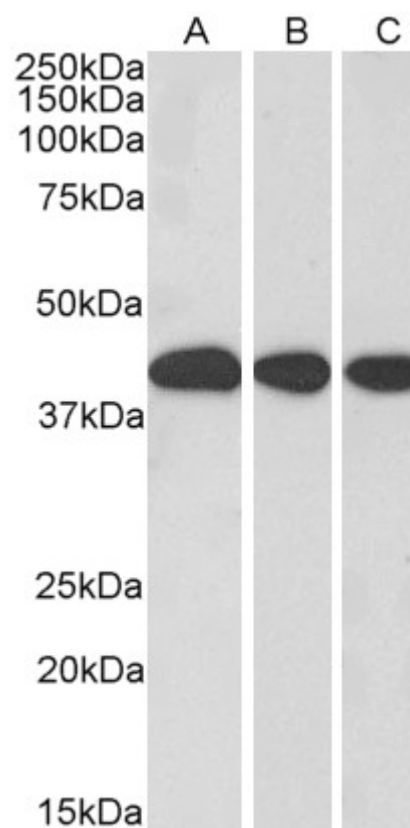
### Species Reactivity

**Tested:** Human, Mouse, Rat, Pig

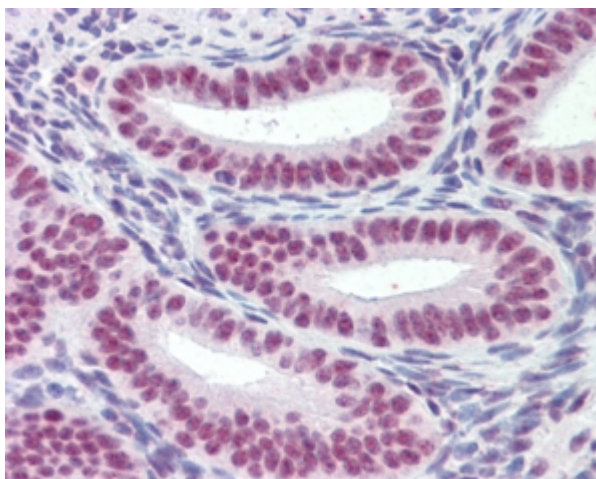
**Expected from sequence similarity:** Human, Mouse, Rat, Pig, Cow



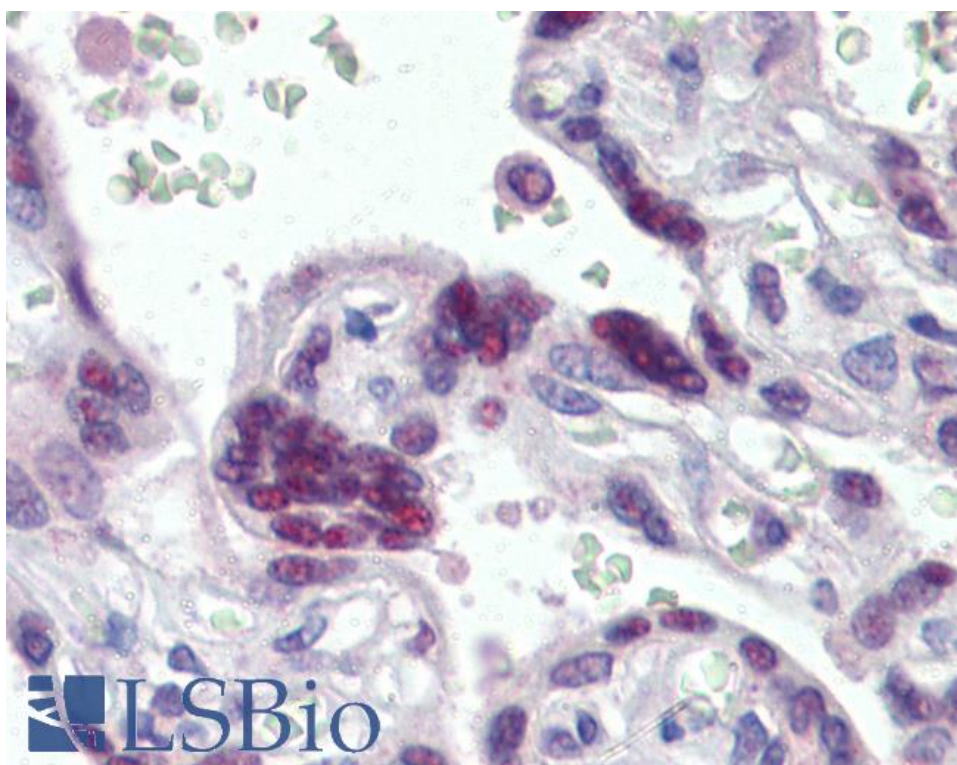
EB06079 (0.3 $\mu$ g/ml) staining of NIH3T3 (A) and HepG2 (B) lysate (35 $\mu$ g protein in RIPA buffer). Primary incubation was 1 hour. Detected by chemiluminescence



EB06079 (0.3 $\mu$ g/ml) staining of Mouse Liver (A), Rat Liver (B) and Pig Liver (C) lysate (35 $\mu$ g protein in RIPA buffer). Primary incubation was 1 hour. Detected by chemiluminescence



EB06079 (2.5µg/ml) staining of paraffin embedded Human Uterus. Steamed antigen retrieval with citrate buffer pH 6, AP-staining. **This data is from a previous batch, not on sale.**



EB06079 (2.5µg/ml) staining of paraffin embedded Human Placenta. Steamed antigen retrieval with citrate buffer pH 6, AP-staining. **This data is from a previous batch, not on sale.**