

## UK Office

### Everest Biotech Ltd

Cherwell Innovation Centre  
77 Heyford Park  
Upper Heyford  
Oxfordshire  
OX25 5HD  
UK

Enquiries:

[info@everestbiotech.com](mailto:info@everestbiotech.com)

Sales:

[sales@everestbiotech.com](mailto:sales@everestbiotech.com)

Tech support:

[support@everestbiotech.com](mailto:support@everestbiotech.com)

Tel: +44 (0)1869 238326

[www.everestbiotech.com](http://www.everestbiotech.com)

**Research Use Only. Not for  
diagnostic or therapeutic use.**

## EB08850 - Goat Anti-Monoglyceride Lipase Antibody

Size: 100µg specific antibody in 200µl



### Target Protein

**Principal Names:** monoglyceride lipase, HU-K5, MGLL, MGL, lysophospholipase-like

**Official Symbol:** MGLL

**Accession Number(s):** NP\_009214.1; NP\_001003794.1

**Human GeneID(s):** [11343](#)

**Non-Human GeneID(s):** 23945 (mouse), 29254 (rat)

**Important Comments:** This antibody is expected to recognize both reported isoforms (NP\_009214.1; NP\_001003794.1).

### Immunogen

Peptide with sequence C-QDPLHLVNADGQY, from the internal region (near N Terminus) of the protein sequence according to NP\_009214.1; NP\_001003794.1.

Please note the [peptide](#) is available for sale.

### Purification and Storage

Purified from goat serum by ammonium sulphate precipitation followed by antigen affinity chromatography using the immunizing peptide.

Supplied at 0.5 mg/ml in Tris saline, 0.02% sodium azide, pH7.3 with 0.5% bovine serum albumin.

Aliquot and store at -20°C. Minimize freezing and thawing.

### Applications Tested

**Peptide ELISA:** antibody detection limit dilution 1:128000.

**Western blot:** Approx 35kDa band observed in Human Brain (Frontal Cortex) and Mouse Adipose lysates (calculated MW of 33.3kDa according to NP\_001003794.1).

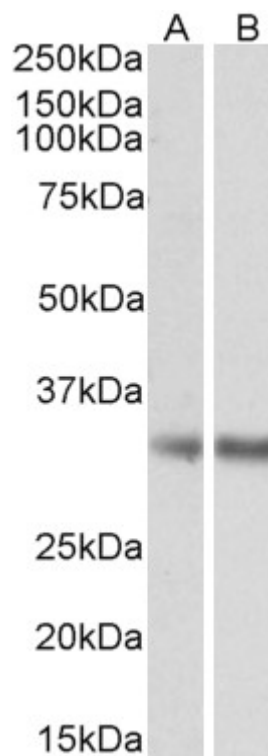
Recommended concentration: 0.5-1.5µg/ml. Primary incubation was 1 hour. Preliminary testing was unsuccessful on Rat for this particular batch.

**IHC:** In paraffin embedded Human Liver, expression of MGLL is detected in hepatocytes. Recommended concentration: 5µg/ml.

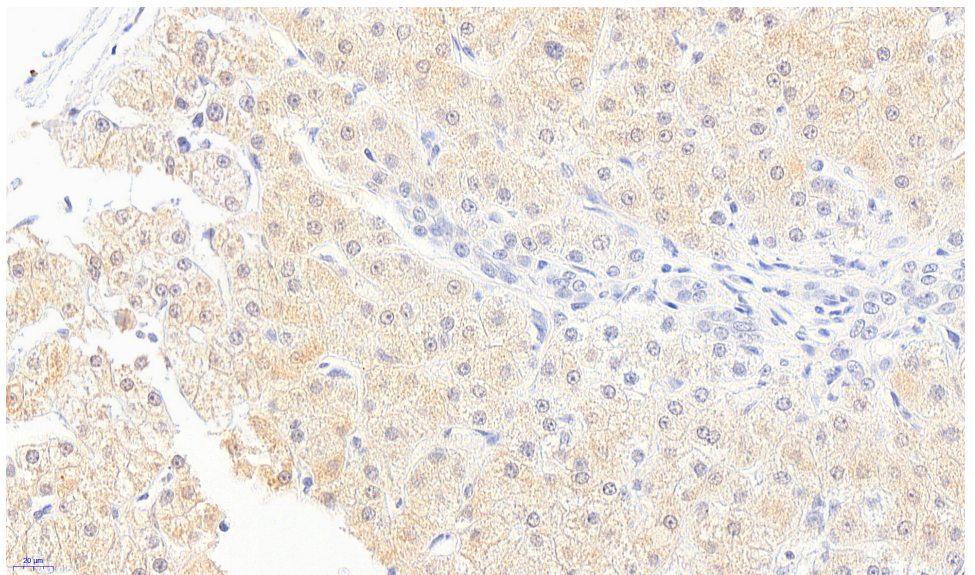
### Species Reactivity

**Tested:** Human, Mouse

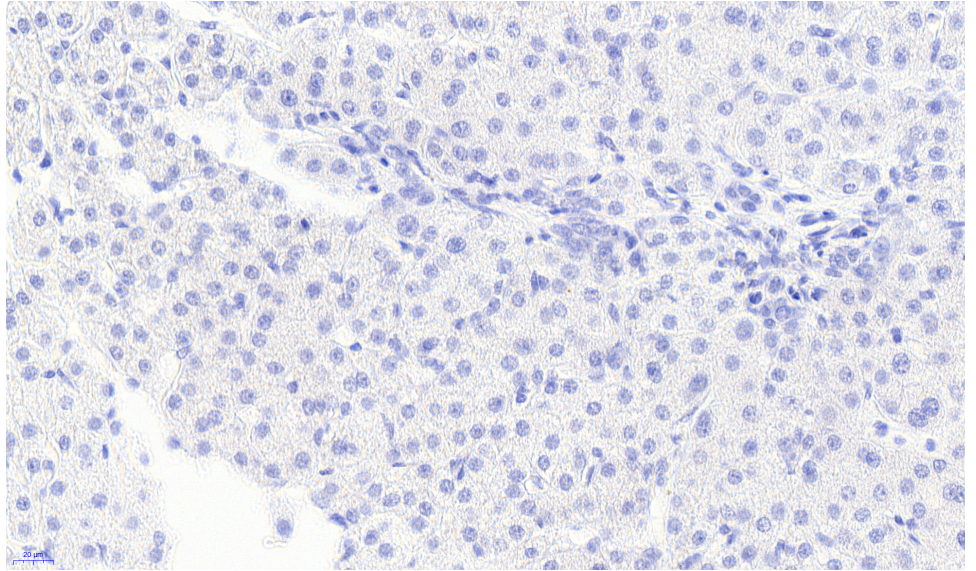
**Expected from sequence similarity:** Human, Mouse, Dog, Cow



EB08850 (0.5 $\mu$ g/ml) staining of Human Frontal Cortex (A) and Mouse Adipose (B) lysates (35 $\mu$ g protein in RIPA buffer). Detected by chemiluminescence.



EB08850 (5 $\mu$ g/ml) staining of paraffin embedded Human Liver. Heat induced antigen retrieval with citrate buffer pH 6, HRP-staining.



EB08850 Negative Control showing staining of paraffin embedded Human Liver, with no primary antibody.