

UK Office

Everest Biotech Ltd

Cherwell Innovation Centre
77 Heyford Park
Upper Heyford
Oxfordshire
OX25 5HD
UK

Enquiries:

info@everestbiotech.com

Sales:

sales@everestbiotech.com

Tech support:

support@everestbiotech.com

Tel: +44 (0)1869 238326

www.everestbiotech.com

**Research Use Only. Not for
diagnostic or therapeutic use.**

EB05728 - Goat Anti-KMT2D/MLL2 Antibody

Size: 100µg specific antibody in 200µl



Target Protein

Principal Names: MLL2, myeloid/lymphoid or mixed-lineage leukemia 2, ALR, ALL1-related gene, AAD10, CAGL114, KMT2D, MLL4, TNRC21, ALL1-related, trinucleotide repeat containing 21, KMS, KABUK1, Lysine methyltransferase 2D, Methyltransferase 2D

Official Symbol: KMT2D

Accession Number(s): NP_003473.3

Human GeneID(s): [8085](#)

Important Comments: The immunizing peptide was designed from NP_003473.1. Since then the sequence has changed in the databases and currently differs at two locations in NP_003473.3.

Immunogen

Peptide with sequence DSQNLAGEDKDSQ-C, from the N Terminus of the protein sequence according to NP_003473.3.

Please note the [peptide](#) is available for sale.

Purification and Storage

Purified from goat serum by ammonium sulphate precipitation followed by antigen affinity chromatography using the immunizing peptide.

Supplied at 0.5 mg/ml in Tris saline, 0.02% sodium azide, pH7.3 with 0.5% bovine serum albumin.

Aliquot and store at -20°C. Minimize freezing and thawing.

Applications Tested

Peptide ELISA: antibody detection limit dilution 1:16000.

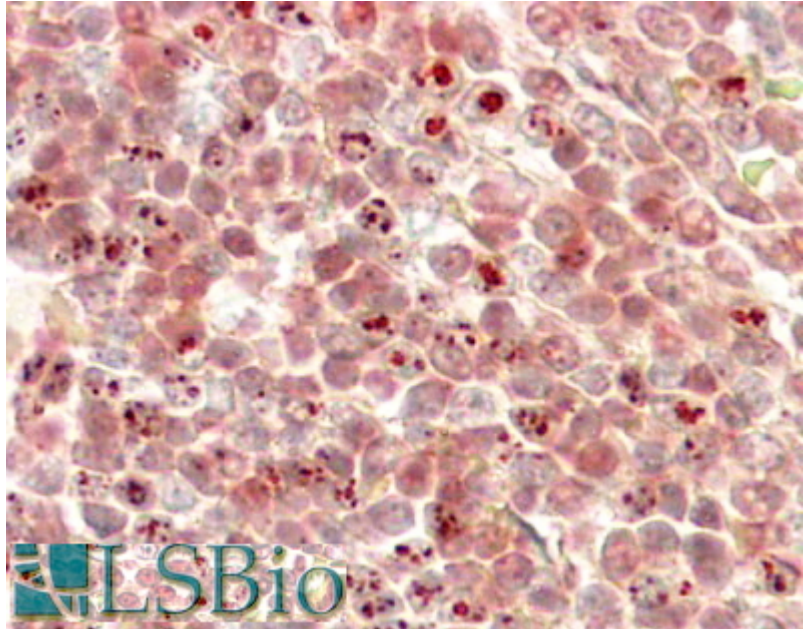
Western blot: Using our routine western blotting protocol we would not expect to reliably detect proteins larger than 250kDa (calculated MW of approx. 593KDa according to NP_003473.3).

IHC: In paraffin embedded Human Placenta shows nuclear staining in the trophoblasts . Similar nuclear patches are observed in Human Liver. Recommended concentration: 4-8µg/ml.

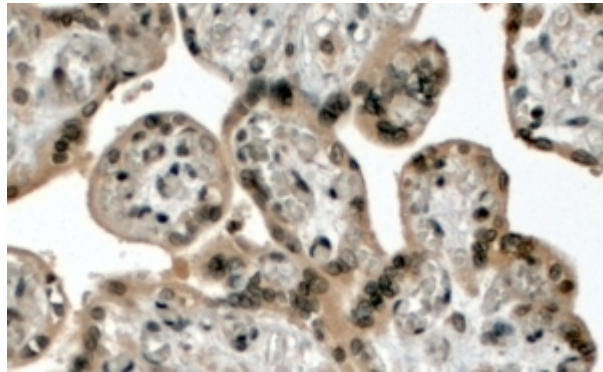
Species Reactivity

Tested: Human

Expected from sequence similarity: Human



EB05728 (3.8µg/ml) staining of paraffin embedded Human Liver. Steamed antigen retrieval with citrate buffer pH 6, HRP-staining.



EB05728 (4µg/ml) staining of paraffin embedded Human Placenta. Steamed antigen retrieval with citrate buffer pH 6, HRP-staining.