

## UK Office

### Everest Biotech Ltd

Cherwell Innovation Centre  
77 Heyford Park  
Upper Heyford  
Oxfordshire  
OX25 5HD  
UK

Enquiries:

[info@everestbiotech.com](mailto:info@everestbiotech.com)

Sales:

[sales@everestbiotech.com](mailto:sales@everestbiotech.com)

Tech support:

[support@everestbiotech.com](mailto:support@everestbiotech.com)

Tel: +44 (0)1869 238326

[www.everestbiotech.com](http://www.everestbiotech.com)

**Research Use Only. Not for  
diagnostic or therapeutic use.**

## EB06765 - Goat Anti-MIF Antibody

Size: 100µg specific antibody in 200µl



### Target Protein

**Principal Names:** MIF, macrophage migration inhibitory factor (glycosylation-inhibiting factor), HGNC:7097, GIF, GLIF, MMIF, glycosylation-inhibiting factor, phenylpyruvate tautomerase, L-dopachrome isomerase, L-dopachrome tautomerase

**Official Symbol:** MIF

**Accession Number(s):** NP\_002406.1

**Human GeneID(s):** [4282](#)

### Immunogen

Peptide with sequence C-NAANVGWNNSTFA, from the C Terminus of the protein sequence according to NP\_002406.1.

Please note the [peptide](#) is available for sale.

### Purification and Storage

Purified from goat serum by ammonium sulphate precipitation followed by antigen affinity chromatography using the immunizing peptide.

Supplied at 0.5 mg/ml in Tris saline, 0.02% sodium azide, pH7.3 with 0.5% bovine serum albumin.

Aliquot and store at -20°C. Minimize freezing and thawing.

### Applications Tested

**Peptide ELISA:** antibody detection limit dilution 1:128000.

**Western blot:** Approx 13kDa band observed in Human Lymph Node, and Thymus lysates and similar bands are observed in lysates of cell lines Daudi and Jurkat (calculated MW of 12.5kDa according to NP\_002406.1). Recommended concentration: 0.01-0.03µg/ml. Primary incubation was 1 hour.

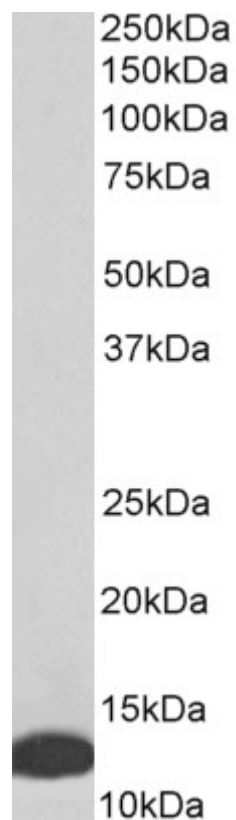
**IHC:** Paraffin embedded Human Thymus. Recommended concentration: 5µg/ml.

**Enzyme immunoassay:** Sandwich-type ELISA with increasing amount of recombinant MIF captured by a rabbit antibody. Recommended reporter concentration: 1.5-3ug/ml

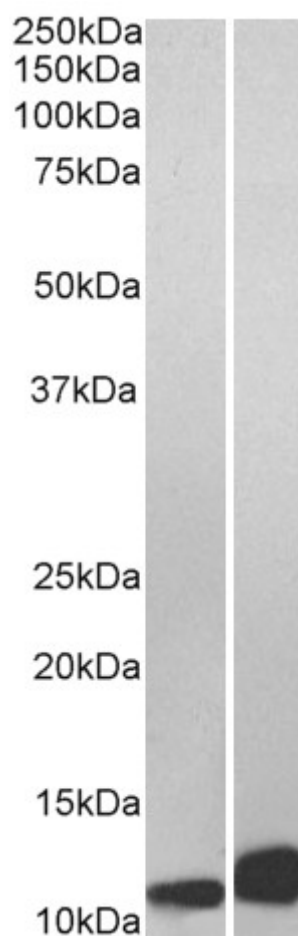
### Species Reactivity

**Tested:** Human

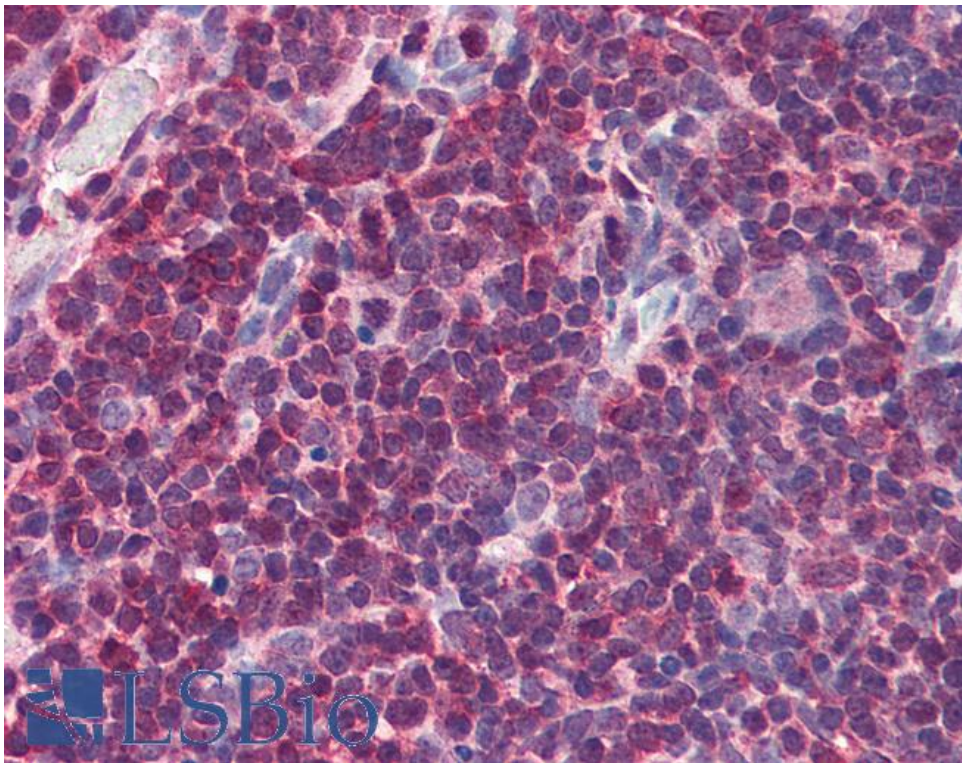
**Expected from sequence similarity:** Human, Rat, Mouse



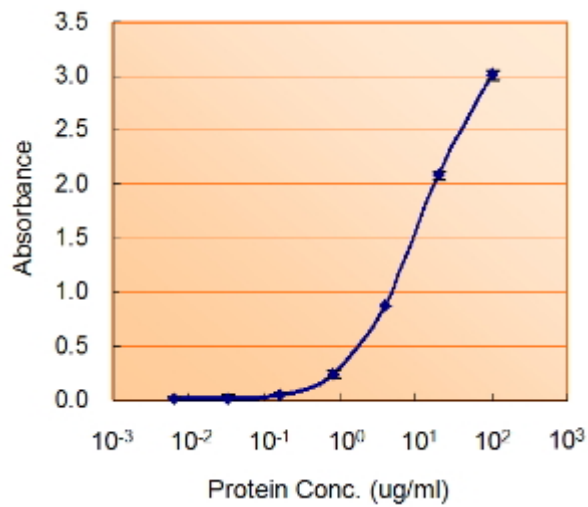
EB06765 (0.01 $\mu$ g/ml) staining of Human Thymus lysate (35 $\mu$ g protein in RIPA buffer). Detected by chemiluminescence.



EB06765 (0.01µg/ml) staining of Daudi (A) and Jurkat (B) lysate (35µg protein in RIPA buffer). Detected by chemiluminescence.



EB06765 (5µg/ml) staining of paraffin embedded Human Thymus. Steamed antigen retrieval with citrate buffer pH 6, AP-staining.



EB06765 (1.5ug/ml) as the reporter with EB002005 as the capture rabbit antibody (5ug/ml).