

## UK Office

### Everest Biotech Ltd

Cherwell Innovation Centre  
77 Heyford Park  
Upper Heyford  
Oxfordshire  
OX25 5HD  
UK

Enquiries:

[info@everestbiotech.com](mailto:info@everestbiotech.com)

Sales:

[sales@everestbiotech.com](mailto:sales@everestbiotech.com)

Tech support:

[support@everestbiotech.com](mailto:support@everestbiotech.com)

Tel: +44 (0)1869 238326

[www.everestbiotech.com](http://www.everestbiotech.com)

**Research Use Only. Not for  
diagnostic or therapeutic use.**

## EB05955 - Goat Anti-MEL18 / PCGF2 Antibody

Size: 100µg specific antibody in 200µl



### Target Protein

**Principal Names:** PCGF2, MEL-18, polycomb group ring finger 2, RNF110, ZNF144, ring finger protein 110, zinc finger protein 144, MGC10545

**Official Symbol:** PCGF2

**Accession Number(s):** NP\_009075.1

**Human GeneID(s):** [7703](#)

### Immunogen

Peptide with sequence C-KMTVNGAPVPPLT, from the C Terminus of the protein sequence according to NP\_009075.1.

Please note the [peptide](#) is available for sale.

### Purification and Storage

Purified from goat serum by ammonium sulphate precipitation followed by antigen affinity chromatography using the immunizing peptide.

Supplied at 0.5 mg/ml in Tris saline, 0.02% sodium azide, pH7.3 with 0.5% bovine serum albumin.

Aliquot and store at -20°C. Minimize freezing and thawing.

### Applications Tested

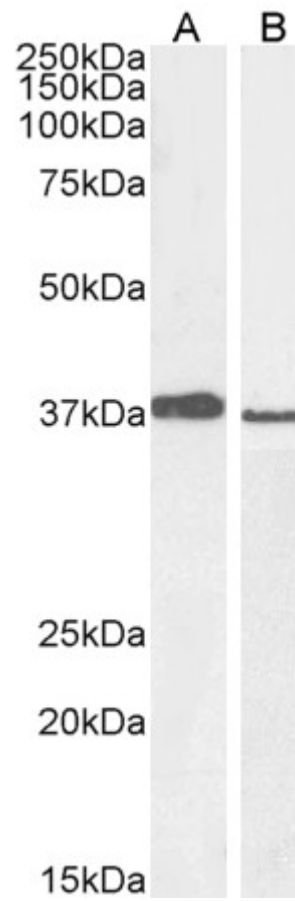
**Peptide ELISA:** antibody detection limit dilution 1:16000.

**Western blot:** Approx 37-38 kDa band observed in lysates of cell lines A549 and PD19 (calculated MW of 37.8kDa according to NP\_009075.1). Recommended concentration: 0.3-1ug/ml. Primary incubation 1 hour at room temperature.

### Species Reactivity

**Tested:** Human

**Expected from sequence similarity:** Human, Dog, Cow



EB05955 staining (1µg/ml) of A549 (A) and PD19 (B) cell lysate (RIPA buffer, 30µg total protein per lane).  
Detected by chemiluminescence.