

UK Office

Everest Biotech Ltd

Cherwell Innovation Centre
77 Heyford Park
Upper Heyford
Oxfordshire
OX25 5HD
UK

Enquiries:

info@everestbiotech.com

Sales:

sales@everestbiotech.com

Tech support:

support@everestbiotech.com

Tel: +44 (0)1869 238326

www.everestbiotech.com

**Research Use Only. Not for
diagnostic or therapeutic use.**

EB09827 - Goat Anti-MAPRE3 Antibody

Size: 100µg specific antibody in 200µl



Target Protein

Principal Names: APC binding protein, EB3, EBF3, EBF3-S, microtubule-associated protein, RP/EB family, member 3, RP3, MAPRE3

Official Symbol: MAPRE3

Accession Number(s): NP_036458.2

Human GeneID(s): [22924](#)

Non-Human GeneID(s): 100732 (mouse)

Immunogen

Peptide with sequence SGRLSNVAPPCILR, from the internal region of the protein sequence according to NP_036458.2.

Please note the [peptide](#) is available for sale.

Purification and Storage

Purified from goat serum by ammonium sulphate precipitation followed by antigen affinity chromatography using the immunizing peptide.

Supplied at 0.5 mg/ml in Tris saline, 0.02% sodium azide, pH7.3 with 0.5% bovine serum albumin.

Aliquot and store at -20°C. Minimize freezing and thawing.

Applications Tested

Peptide ELISA: antibody detection limit dilution 1:64000.

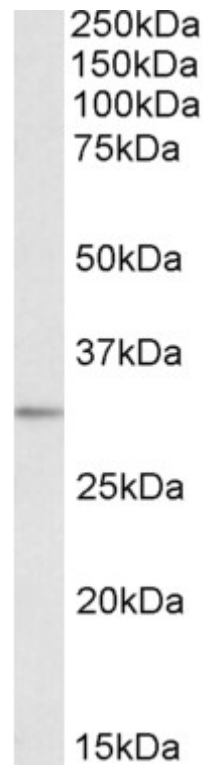
Western blot: Approx 32kDa band observed in Human Brain (Cerebellum and Amygdala) and Mouse Brain lysates (calculated MW of 32kDa according to NP_036458.2).

Recommended concentration: 0.1-1.0 µg/ml.

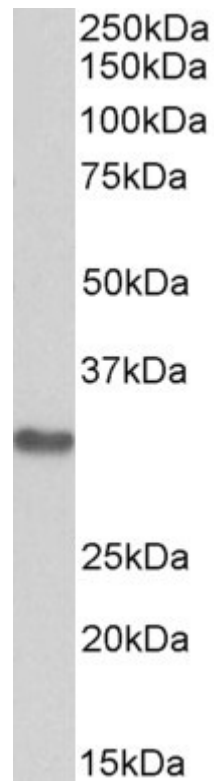
Species Reactivity

Tested: Human, Mouse

Expected from sequence similarity: Human, Mouse, Dog, Cow



EB09827 (0.1 μ g/ml) staining of Human Brain (Amygdala) lysate (35 μ g protein in RIPA buffer). Primary incubation was 1 hour. Detected by chemiluminescence.



EB09827 (0.3 μ g/ml) staining of Mouse Brain lysate (35 μ g protein in RIPA buffer). Primary incubation was 1 hour. Detected by chemiluminescence.