

## UK Office

### Everest Biotech Ltd

Cherwell Innovation Centre  
77 Heyford Park  
Upper Heyford  
Oxfordshire  
OX25 5HD  
UK

Enquiries:

[info@everestbiotech.com](mailto:info@everestbiotech.com)

Sales:

[sales@everestbiotech.com](mailto:sales@everestbiotech.com)

Tech support:

[support@everestbiotech.com](mailto:support@everestbiotech.com)

Tel: +44 (0)1869 238326

[www.everestbiotech.com](http://www.everestbiotech.com)

**Research Use Only. Not for  
diagnostic or therapeutic use.**

## EB06810 - Goat Anti-Mammaglobin A / SCGB2A2 Antibody

Size: 100µg specific antibody in 200µl



### Target Protein

**Principal Names:** SCGB2A2, secretoglobin, family 2A, member 2, HGNC:7050, MGB1, UGB2, MGC71974, mammaglobin 1, mammaglobin A

**Official Symbol:** SCGB2A2

**Accession Number(s):** NP\_002402.1

**Human GeneID(s):** [4250](#)

### Immunogen

Peptide with sequence C-NPQVSKTEYKEL, from the internal region of the protein sequence according to NP\_002402.1.

Please note the [peptide](#) is available for sale.

### Purification and Storage

Purified from goat serum by ammonium sulphate precipitation followed by antigen affinity chromatography using the immunizing peptide.

Supplied at 0.5 mg/ml in Tris saline, 0.02% sodium azide, pH7.3 with 0.5% bovine serum albumin.

Aliquot and store at -20°C. Minimize freezing and thawing.

### Applications Tested

**Peptide ELISA:** antibody detection limit dilution 1:32000.

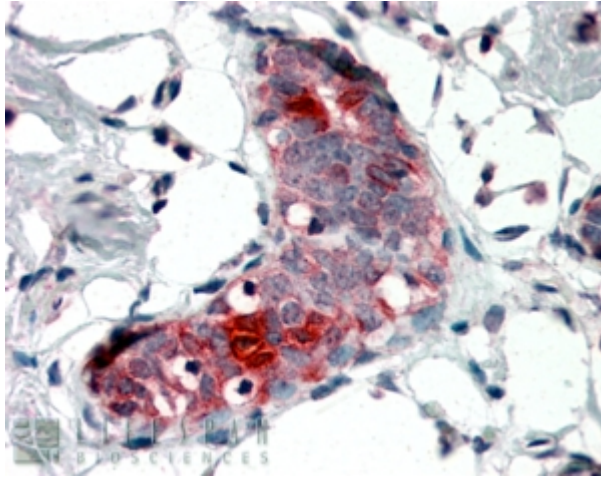
**Western blot:** Not yet tested - our routinely used western blotting protocol does not allow detection of proteins as small as the calculated size of 10.5kDa according to NP\_002402.1. Therefore we cannot recommend an optimal concentration and the product is investigative grade. We would appreciate any feedback from people in the field - have any results been reported with other antibodies/lysates? Have any further splice variants/modified forms been reported?

**IHC:** In paraffin embedded Human Breast shows staining of cytoplasm in some acinar cells.. Recommended concentration, 4-6µg/ml.

### Species Reactivity

**Tested:** Human

**Expected from sequence similarity:** Human



EB06810 (4µg/ml) staining of paraffin embedded Human Breast. Steamed antigen retrieval with citrate buffer pH 6, AP-staining.