

UK Office

Everest Biotech Ltd

Cherwell Innovation Centre
77 Heyford Park
Upper Heyford
Oxfordshire
OX25 5HD
UK

Enquiries:

info@everestbiotech.com

Sales:

sales@everestbiotech.com

Tech support:

support@everestbiotech.com

Tel: +44 (0)1869 238326

www.everestbiotech.com

**Research Use Only. Not for
diagnostic or therapeutic use.**

EB09870 - Goat Anti-LSP1 Antibody

Size: 100µg specific antibody in 200µl



Target Protein

Principal Names: 47 kDa actin binding protein, 52 kDa phosphoprotein, F-actin binding and cytoskeleton associated protein, leufactin (leukocyte F-actin binding protein), leukocyte-specific protein 1, lymphocyte-specific ant, lymphocyte-specific protein 1, pp52, WP34, LSP1

Official Symbol: LSP1

Accession Number(s): NP_002330.1; NP_001013271.1

Human GeneID(s): [4046](#)

Non-Human GeneID(s): 16331 (mouse), 54259 (rat)

Important Comments: This antibody is expected to recognize both reported isoforms (NP_002330.1; NP_001013271.1). Reported variants represent identical protein: NP_001013273.1, NP_001013271.1, NP_001013272.1

Immunogen

Peptide with sequence C-RYKFVATGHGKYEKV, from the C Terminus of the protein sequence according to NP_002330.1; NP_001013271.1.

Please note the [peptide](#) is available for sale.

Purification and Storage

Purified from goat serum by ammonium sulphate precipitation followed by antigen affinity chromatography using the immunizing peptide.

Supplied at 0.5 mg/ml in Tris saline, 0.02% sodium azide, pH7.3 with 0.5% bovine serum albumin.

Aliquot and store at -20°C. Minimize freezing and thawing.

Applications Tested

Peptide ELISA: antibody detection limit dilution 1:16000.

Western blot: Approx 50kDa band observed in Human Lymph Node, Tonsil and Peripheral Blood Mononucleocytes lysates (calculated MW of 37.2kDa according to NP_002330.1). The observed molecular weight corresponds to earlier findings in literature with different antibodies (Liu et al, J Exp Med. 2005 Feb 7;201(3):409-18; PMID: 15684321) . Recommended concentration: 0.05-0.2µg/ml.

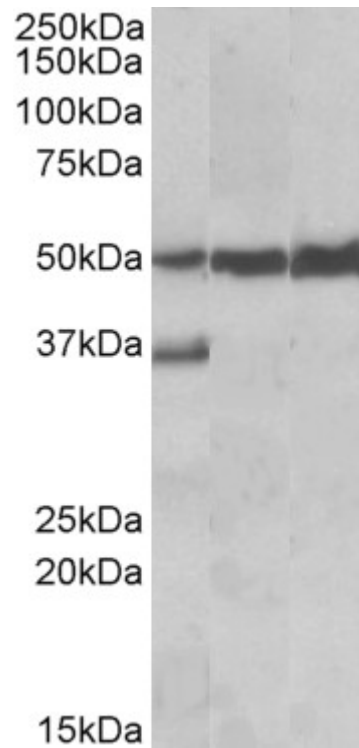
Species Reactivity

Tested: Human, Mouse, Rat

Expected from sequence similarity: Human, Mouse, Rat, Dog, Cow



EB09870 (0.05µg/ml) staining of Human Peripheral Lymphocytes lysate (35µg protein in RIPA buffer). Primary incubation was 1 hour. Detected by chemiluminescence.



EB09870 (0.05µg/ml) staining of Human Liver lysate (lane 1), Mouse Liver lysate (lane 2) and Rat Liver lysate (lane 3) (35µg protein in RIPA buffer). Primary incubation was 1 hour. Detected by chemiluminescence.