

UK Office

Everest Biotech Ltd

Cherwell Innovation Centre
77 Heyford Park
Upper Heyford
Oxfordshire
OX25 5HD
UK

Enquiries:

info@everestbiotech.com

Sales:

sales@everestbiotech.com

Tech support:

support@everestbiotech.com

Tel: +44 (0)1869 238326

www.everestbiotech.com

**Research Use Only. Not for
diagnostic or therapeutic use.**

EB08841 - Goat Anti-LRP4 / LRP10 Antibody

Size: 100µg specific antibody in 200µl



Target Protein

Principal Names: LRP4, low density lipoprotein receptor-related protein 4, KIAA0816, LRP10, MEGF7, low-density lipoprotein receptor-related protein 4

Official Symbol: LRP4

Accession Number(s): NP_002325.2

Human GeneID(s): [4038](#)

Non-Human GeneID(s): 228357 (mouse), 83469 (rat)

Immunogen

Peptide with sequence C-SNPSYRTSTQEVK , from the internal region of the protein sequence according to NP_002325.2.

Please note the [peptide](#) is available for sale.

Purification and Storage

Purified from goat serum by ammonium sulphate precipitation followed by antigen affinity chromatography using the immunizing peptide.

Supplied at 0.5 mg/ml in Tris saline, 0.02% sodium azide, pH7.3 with 0.5% bovine serum albumin.

Aliquot and store at -20°C. Minimize freezing and thawing.

Applications Tested

Peptide ELISA: antibody detection limit dilution 1:32000.

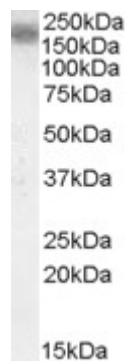
Western blot: Approx. 200kDa band observed in Human Brain (Cerebral Cortex) lysates (calculated MW of 212kDa according to NP_002325.2). Recommended concentration: 0.1-0.3µg/ml.

IHC: Paraffin embedded Human Colon. Recommended concentration: 3.75µg/ml.

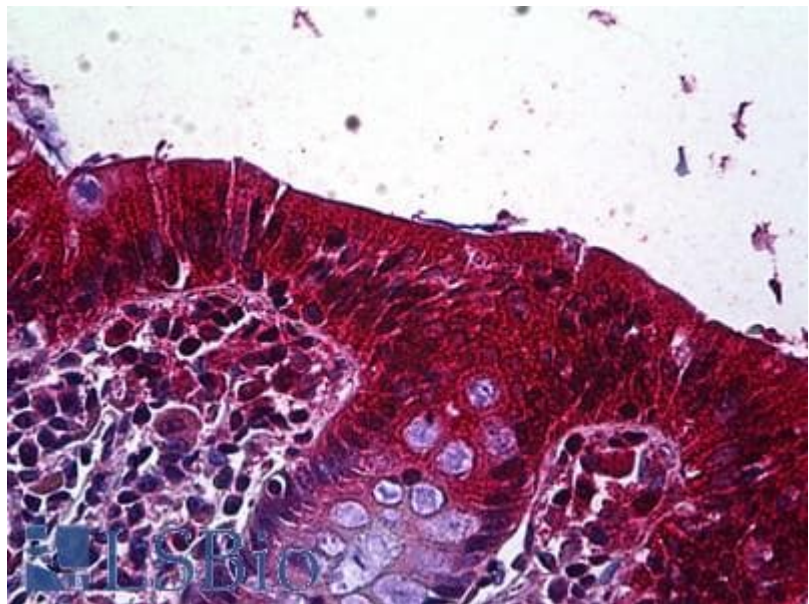
Species Reactivity

Tested: Human

Expected from sequence similarity: Human, Mouse, Rat, Cow



EB08841 (0.1 μ g/ml) staining of Human Cerebral Cortex lysate (35 μ g protein in RIPA buffer). Primary incubation was 1 hour. Detected by chemiluminescence.



EB08841 (3.75 μ g/ml) staining of paraffin embedded Human Colon. Steamed antigen retrieval with citrate buffer pH 6, AP-staining.