

UK Office

Everest Biotech Ltd

Cherwell Innovation Centre
77 Heyford Park
Upper Heyford
Oxfordshire
OX25 5HD
UK

Enquiries:

info@everestbiotech.com

Sales:

sales@everestbiotech.com

Tech support:

support@everestbiotech.com

Tel: +44 (0)1869 238326

www.everestbiotech.com

**Research Use Only. Not for
diagnostic or therapeutic use.**

EB09755 - Goat Anti-LPP Antibody

Size: 100µg specific antibody in 200µl



Target Protein

Principal Names: LPP, LIM domain containing preferred translocation partner in lipoma, LIM domain-containing preferred translocation partner in lipoma, Lipoma-preferred partner

Official Symbol: LPP

Accession Number(s): NP_005569.1

Human GeneID(s): [4026](#)

Immunogen

Peptide with sequence C-RNDSPTYGQQGHP, from the internal region of the protein sequence according to NP_005569.1.

Please note the [peptide](#) is available for sale.

Purification and Storage

Purified from goat serum by ammonium sulphate precipitation followed by antigen affinity chromatography using the immunizing peptide.

Supplied at 0.5 mg/ml in Tris saline, 0.02% sodium azide, pH7.3 with 0.5% bovine serum albumin.

Aliquot and store at -20°C. Minimize freezing and thawing.

Applications Tested

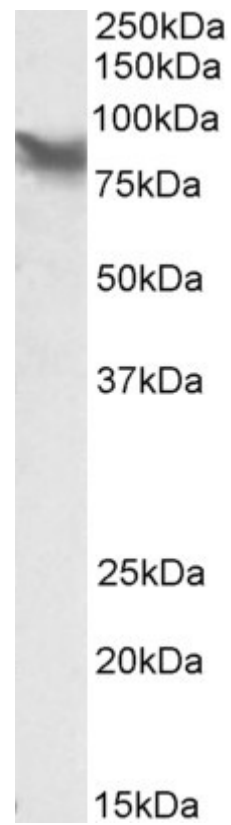
Peptide ELISA: antibody detection limit dilution 1:16000.

Western blot: Approx 85kDa band observed in Human Placenta lysates and in lysates of cell line HepG2 (calculated MW of 65.7kDa according to NP_005569.1). The observed molecular weight corresponds to earlier findings with different antibodies from other commercial sources. Recommended concentration: 0.1-0.3µg/ml.

Species Reactivity

Tested: Human

Expected from sequence similarity: Human, Dog, Cow



EB09755 (0.1µg/ml) staining of HepG2 lysate (35µg protein in RIPA buffer). Primary incubation was 1 hour.
Detected by chemiluminescence.