

## UK Office

### Everest Biotech Ltd

Cherwell Innovation Centre  
77 Heyford Park  
Upper Heyford  
Oxfordshire  
OX25 5HD  
UK

Enquiries:

[info@everestbiotech.com](mailto:info@everestbiotech.com)

Sales:

[sales@everestbiotech.com](mailto:sales@everestbiotech.com)

Tech support:

[support@everestbiotech.com](mailto:support@everestbiotech.com)

Tel: +44 (0)1869 238326

[www.everestbiotech.com](http://www.everestbiotech.com)

**Research Use Only. Not for  
diagnostic or therapeutic use.**

## EB05439 - Goat Anti-LIS1 / PAFAH1B1 Antibody

Size: 100µg specific antibody in 200µl



### Target Protein

**Principal Names:** PAFAH1B1, LIS1, platelet-activating factor acetylhydrolase, isoform 1b, alpha subunit 45kDa, MDCR, PAFAH, lissencephaly 1 protein, Platelet-activating factor acetylhydrolase, isoform 1B, alpha subunit, platelet-activating factor acetylhydrolase, isoform 1b, alpha subunit (45kD), platelet-activating factor acetylhydrolase, isoform 1b, subunit 1 (45kDa), LIS2, MDS

**Official Symbol:** PAFAH1B1

**Accession Number(s):** NP\_000421.1

**Human GeneID(s):** [5048](#)

### Immunogen

Peptide with sequence TGSVDQTVKWEER, from the C Terminus of the protein sequence according to NP\_000421.1.

Please note the [peptide](#) is available for sale.

### Purification and Storage

Purified from goat serum by ammonium sulphate precipitation followed by antigen affinity chromatography using the immunizing peptide.

Supplied at 0.5 mg/ml in Tris saline, 0.02% sodium azide, pH7.3 with 0.5% bovine serum albumin.

Aliquot and store at -20°C. Minimize freezing and thawing.

### Applications Tested

**Peptide ELISA:** antibody detection limit dilution 1:32000.

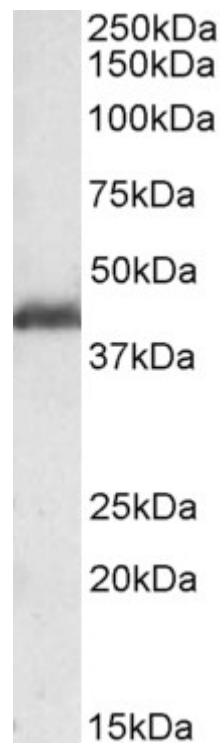
**Western blot:** Approx 40kDa band observed in Human Ovary and in Rat Ovary lysates (calculated MW of 46.6kDa according to Human NP\_000421.1 and to Rat NP\_113951.1). Recommended concentration: 0.1-0.3µg/ml.

**IHC:** Paraffin embedded Human Brain (Cortex), Thyroid and Pancreas. Recommended concentration: 3.75µg/ml.

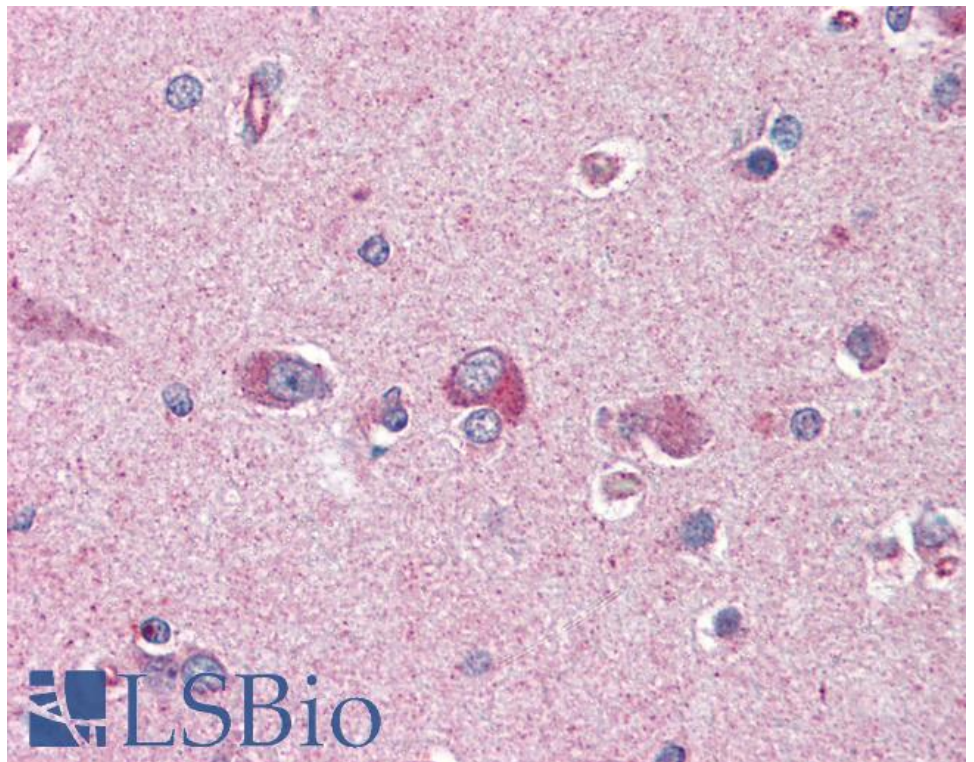
### Species Reactivity

**Tested:** Human, Rat

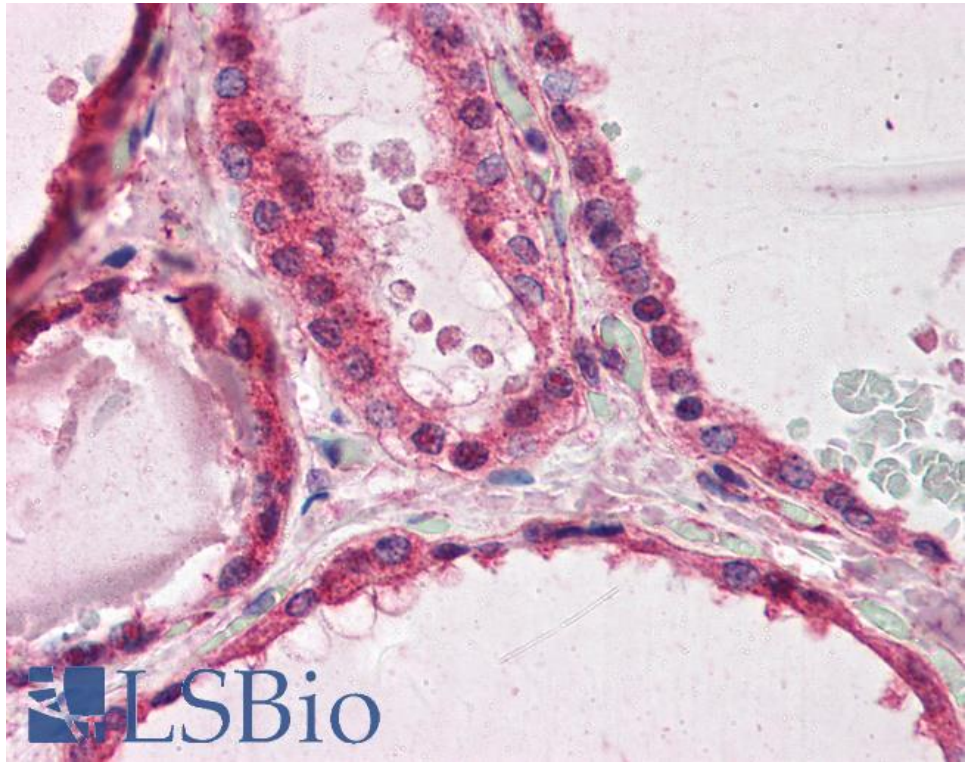
**Expected from sequence similarity:** Human, Rat



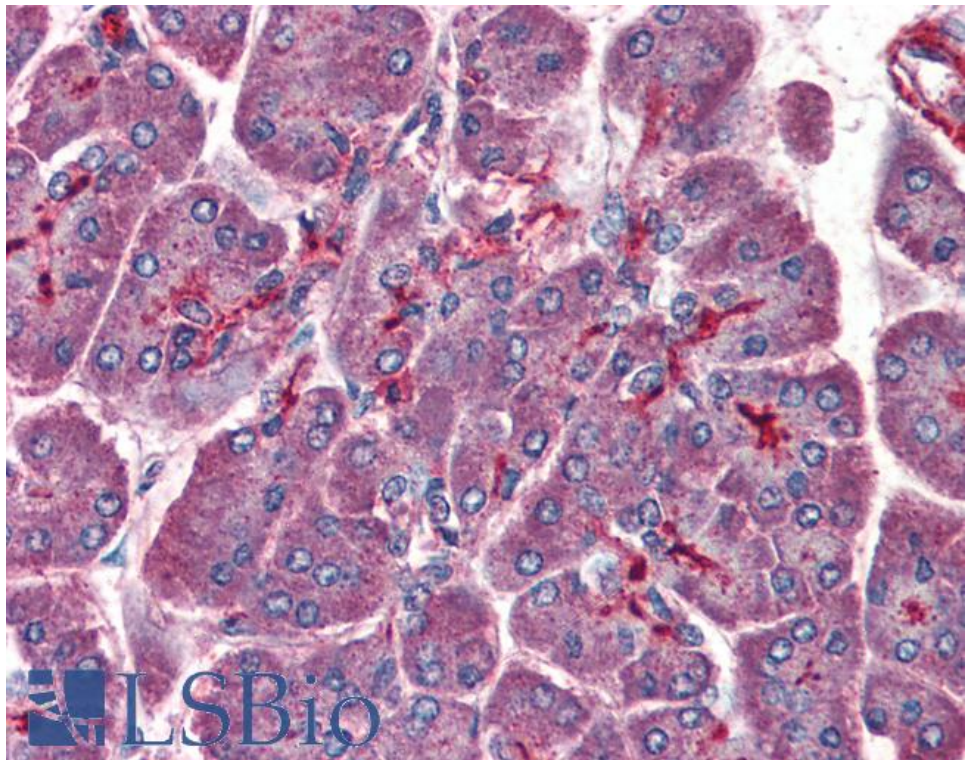
EB05439 (0.1µg/ml) staining of Rat Ovary lysate (35µg protein in RIPA buffer). Primary incubation was 1 hour. Detected by chemiluminescence.



EB05439 (3.75µg/ml) staining of paraffin embedded Human Cortex. Steamed antigen retrieval with citrate buffer pH 6, AP-staining.



EB05439 (3.75µg/ml) staining of paraffin embedded Human Thyroid. Steamed antigen retrieval with citrate buffer Ph 6, AP-staining.



EB05439 (3.75µg/ml) staining of paraffin embedded Human Pancreas. Steamed antigen retrieval with citrate buffer Ph 6, AP-staining.