

UK Office

Everest Biotech Ltd

Cherwell Innovation Centre
77 Heyford Park
Upper Heyford
Oxfordshire
OX25 5HD
UK

Enquiries:

info@everestbiotech.com

Sales:

sales@everestbiotech.com

Tech support:

support@everestbiotech.com

Tel: +44 (0)1869 238326

www.everestbiotech.com

**Research Use Only. Not for
diagnostic or therapeutic use.**

EB09494 - Goat Anti-LIG1 / DNA ligase I Antibody

Size: 100µg specific antibody in 200µl



Target Protein

Principal Names: LIG1, ligase I, DNA, ATP-dependent, MGC117397, MGC130025, DNA ligase I

Official Symbol: LIG1

Accession Number(s): NP_000225.1

Human GeneID(s): [3978](#)

Non-Human GeneID(s): 81513 (rat)

Immunogen

Peptide with sequence C-RVREDKQPEQATTS, from the internal region (near C-Terminus) of the protein sequence according to NP_000225.1.

Please note the [peptide](#) is available for sale.

Purification and Storage

Purified from goat serum by ammonium sulphate precipitation followed by antigen affinity chromatography using the immunizing peptide.

Supplied at 0.5 mg/ml in Tris saline, 0.02% sodium azide, pH7.3 with 0.5% bovine serum albumin.

Aliquot and store at -20°C. Minimize freezing and thawing.

Applications Tested

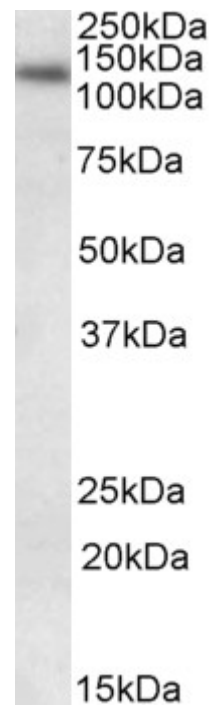
Peptide ELISA: antibody detection limit dilution 1:16000.

Western blot: Approx 125kDa band observed in nuclear lysates of cell line HeLa (calculated MW of 102kDa according to NP_000225.1). The observed molecular weight corresponds to earlier findings with different antibodies from other commercial sources. Recommended concentration: 0.1-0.3µg/ml.

Species Reactivity

Tested: Human

Expected from sequence similarity: Human, Rat



EB09494 (0.1µg/ml) staining of HeLa nuclear lysate (35µg protein in RIPA buffer). Primary incubation was 1 hour. Detected by chemiluminescence.