

UK Office

Everest Biotech Ltd

Cherwell Innovation Centre
77 Heyford Park
Upper Heyford
Oxfordshire
OX25 5HD
UK

Enquiries:

info@everestbiotech.com

Sales:

sales@everestbiotech.com

Tech support:

support@everestbiotech.com

Tel: +44 (0)1869 238326

www.everestbiotech.com

**Research Use Only. Not for
diagnostic or therapeutic use.**

EB07196 - Goat Anti-LEF1 Antibody

Size: 100µg specific antibody in 200µl



Target Protein

Principal Names: LEF1, lymphoid enhancer-binding factor 1, HGNC:6551, DKFZp586H0919, TCF1ALPHA, lymphoid enhancer binding factor-1

Official Symbol: LEF1

Accession Number(s): NP_057353.1

Human GeneID(s): [51176](#)

Non-Human GeneID(s): 16842 (mouse), 161452 (rat)

Immunogen

Peptide with sequence C-QHEQRKEQEPKRPH, from the internal region of the protein sequence according to NP_057353.1.

Please note the [peptide](#) is available for sale.

Purification and Storage

Purified from goat serum by ammonium sulphate precipitation followed by antigen affinity chromatography using the immunizing peptide.

Supplied at 0.5 mg/ml in Tris saline, 0.02% sodium azide, pH7.3 with 0.5% bovine serum albumin.

Aliquot and store at -20°C. Minimize freezing and thawing.

Applications Tested

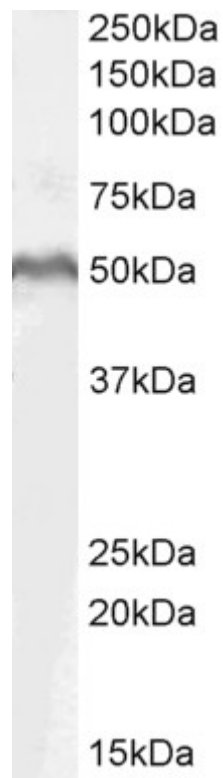
Peptide ELISA: antibody detection limit dilution 1:32000.

Western blot: Approx 50kDa band observed in MOLT4 lysates (calculated MW of 44.2kDa according to NP_057353.1). The observed molecular weight corresponds to earlier findings in literature (Yasumoto et al, EMBO J. 2002 Jun 3;21(11):2703-14.; PMID: 12032083). Recommended concentration: 1-3µg/ml. Primary incubation was 1 hour.

Species Reactivity

Tested: Human

Expected from sequence similarity: Human, Mouse, Rat, Dog



EB07196 (1µg/ml) staining of MOLT4 lysate (35µg protein in RIPA buffer). Detected by chemiluminescence.