

## UK Office

### Everest Biotech Ltd

Cherwell Innovation Centre  
77 Heyford Park  
Upper Heyford  
Oxfordshire  
OX25 5HD  
UK

Enquiries:

[info@everestbiotech.com](mailto:info@everestbiotech.com)

Sales:

[sales@everestbiotech.com](mailto:sales@everestbiotech.com)

Tech support:

[support@everestbiotech.com](mailto:support@everestbiotech.com)

Tel: +44 (0)1869 238326

[www.everestbiotech.com](http://www.everestbiotech.com)

**Research Use Only. Not for  
diagnostic or therapeutic use.**

## EB07196-T - Goat Anti-LEF1 Antibody - Trial

Size: 20µg specific antibody in 40µl



### Target Protein

**Principal Names:** LEF1, lymphoid enhancer-binding factor 1, HGNC:6551, DKFZp586H0919, TCF1ALPHA, lymphoid enhancer binding factor-1

**Official Symbol:** LEF1

**Accession Number(s):** NP\_057353.1

**Human GeneID(s):** [51176](#)

**Non-Human GeneID(s):** 16842 (mouse), 161452 (rat)

### Immunogen

Peptide with sequence C-QHEQRKEQEPKRPH, from the internal region of the protein sequence according to NP\_057353.1.

Please note the [peptide](#) is available for sale.

### Purification and Storage

Purified from goat serum by ammonium sulphate precipitation followed by antigen affinity chromatography using the immunizing peptide.

Supplied at 0.5 mg/ml in Tris saline, 0.02% sodium azide, pH7.3 with 0.5% bovine serum albumin.

Aliquot and store at -20°C. Minimize freezing and thawing.

### Applications Tested

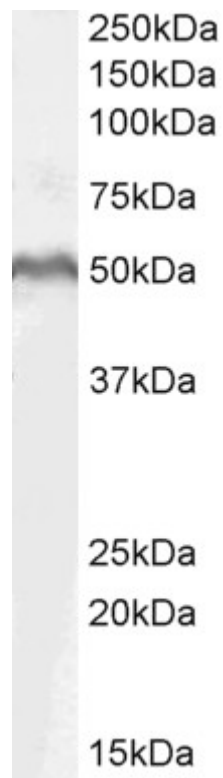
**Peptide ELISA:** antibody detection limit dilution 1:32000.

**Western blot:** Approx 50kDa band observed in MOLT4 lysates (calculated MW of 44.2kDa according to NP\_057353.1). The observed molecular weight corresponds to earlier findings in literature (Yasumoto et al, EMBO J. 2002 Jun 3;21(11):2703-14.; PMID: 12032083). Recommended concentration: 1-3µg/ml. Primary incubation was 1 hour.

### Species Reactivity

**Tested:** Human

**Expected from sequence similarity:** Human, Mouse, Rat, Dog



EB07196 (1µg/ml) staining of MOLT4 lysate (35µg protein in RIPA buffer). Detected by chemiluminescence.