



UK Office

Everest Biotech Ltd

Cherwell Innovation Centre
77 Heyford Park
Upper Heyford
Oxfordshire
OX25 5HD
UK

Enquiries:

info@everestbiotech.com

Sales:

sales@everestbiotech.com

Tech support:

support@everestbiotech.com

Tel: +44 (0)1869 238326

www.everestbiotech.com

**Research Use Only. Not for
diagnostic or therapeutic use.**

EB07682-B - Goat Anti-Latexin, Biotinylated Antibody

Size: 100µg specific antibody in 200µl



Target Protein

Principal Names: LXN, latexin, ECI, TCI, MUM, endogenous carboxypeptidase inhibitor, tissue carboxypeptidase inhibitor

Official Symbol: LXN

Accession Number(s): NP_064554.3

Human GeneID(s): [56925](#)

Non-Human GeneID(s): 17035 (mouse), 59073 (rat)

Immunogen

Peptide with sequence C-QYGTKVKHNSRLPKE., from the C Terminus of the protein sequence according to NP_064554.3.

Please note the [peptide](#) is available for sale.

Purification and Storage

Purified from goat serum by ammonium sulphate precipitation followed by antigen affinity chromatography using the immunizing peptide.

Supplied at 0.5 mg/ml in Tris saline, 0.02% sodium azide, pH7.3 with 0.5% bovine serum albumin.

Aliquot and store at -20°C. Minimize freezing and thawing.

Applications Tested

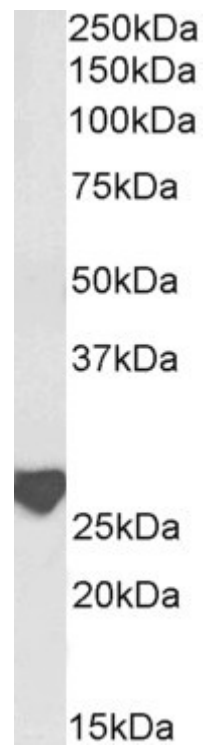
Peptide ELISA: antibody detection limit dilution 1:128000.

Western blot: Approx 28kDa band observed in Rat Brain lysates (calculated MW of 25.6kDa according to Rat NP_113843.1). See non-biotinylated parental product's datasheet for further QC data. Recommended concentration: 0.1-0.3µg/ml.

Species Reactivity

Tested: Human, Mouse, Rat, Dog

Expected from sequence similarity: Human, Mouse, Rat, Dog



Biotinylated EB07682 (0.3µg/ml) staining of Rat Brain lysate (35µg protein in RIPA buffer), exactly mirroring its parental non-biotinylated product. Primary incubation was 1 hour. Detected by chemiluminescence, using streptavidin-HRP and using NAP blocker as a substitute for skimmed milk.