



UK Office

Everest Biotech Ltd
Cherwell Innovation Centre
77 Heyford Park
Upper Heyford
Oxfordshire
OX25 5HD
UK

Enquiries:

info@everestbiotech.com

Sales:

sales@everestbiotech.com

Tech support:

support@everestbiotech.com

Tel: +44 (0)1869 238326

www.everestbiotech.com

**Research Use Only. Not for
diagnostic or therapeutic use.**

EB08165 - Goat Anti-LASP1 (internal region) Antibody

Size: 100µg specific antibody in 200µl



Target Protein

Principal Names: LASP1, LIM and SH3 protein 1, Lasp-1, MLN50

Official Symbol: LASP1

Accession Number(s): NP_006139.1

Human GeneID(s): [3927](#)

Immunogen

Peptide with sequence C-PERRDSQDGSSYR, from the internal region of the protein sequence according to NP_006139.1.

Please note the [peptide](#) is available for sale.

Purification and Storage

Purified from goat serum by ammonium sulphate precipitation followed by antigen affinity chromatography using the immunizing peptide.

Supplied at 0.5 mg/ml in Tris saline, 0.02% sodium azide, pH7.3 with 0.5% bovine serum albumin.

Aliquot and store at -20°C. Minimize freezing and thawing.

Applications Tested

Peptide ELISA: antibody detection limit dilution 1:32000.

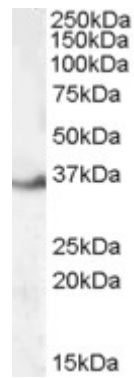
Western blot: Approx 36kDa band observed in Human Kidney lysates (calculated MW of 29.7kDa according to NP_006139.1). The observed molecular weight corresponds to earlier findings in literature with different antibodies (Schreiber et al, Gene. 1998 Jan 30;207(2):171-5; PMID: 9511759). Recommended concentration: 0.03-0.1µg/ml.

IHC: Paraffin embedded Human Colon and Small Intestine. Recommended concentration: 2.5µg/ml.

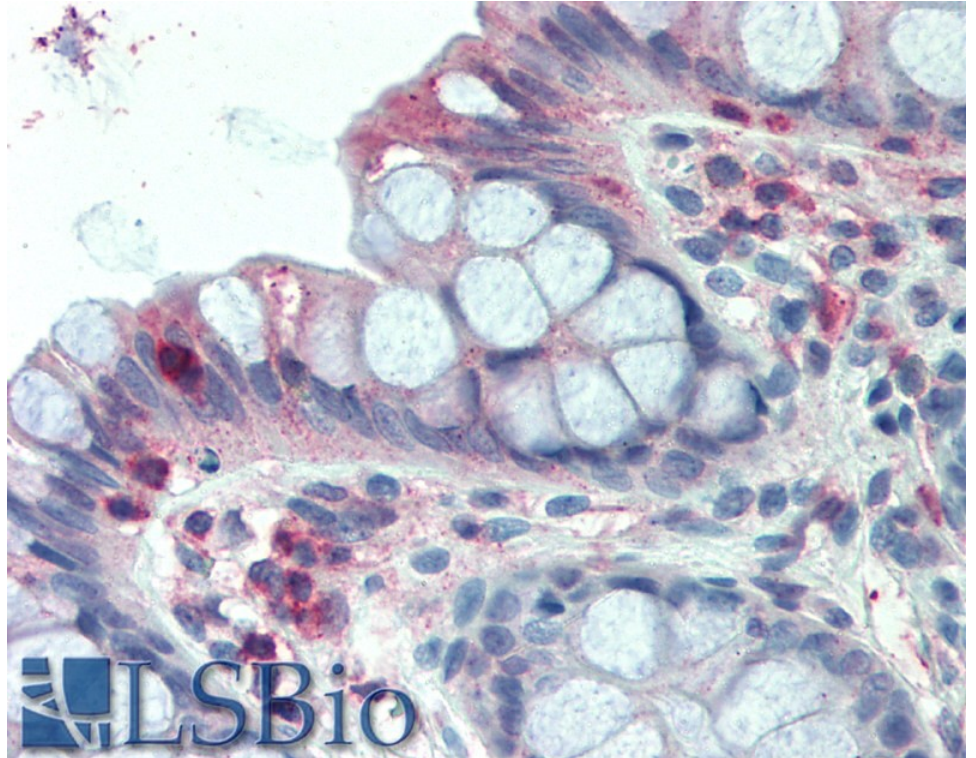
Species Reactivity

Tested: Human

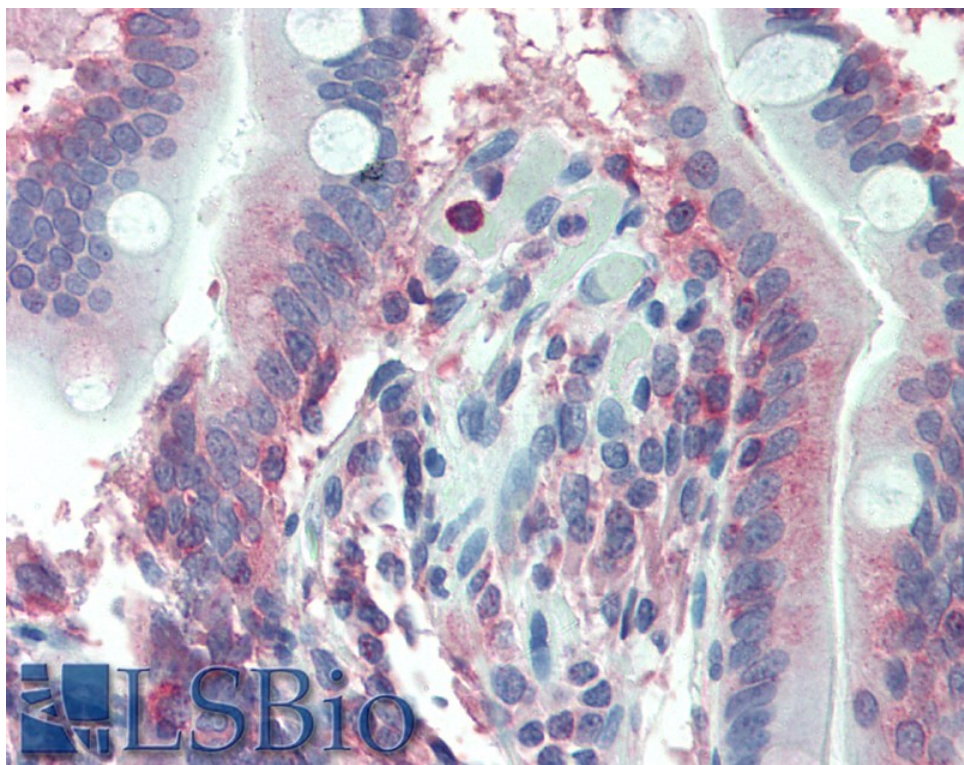
Expected from sequence similarity: Human, Dog



EB08165 (0.1 μ g/ml) staining of Human Kidney lysate (35 μ g protein in RIPA buffer). Primary incubation was 1 hour. Detected by chemiluminescence.



EB08165 (2.5 μ g/ml) staining of paraffin embedded Human Colon. Steamed antigen retrieval with citrate buffer pH 6, AP-staining.



EB08165 (2.5µg/ml) staining of paraffin embedded Human Small Intestine. Steamed antigen retrieval with citrate buffer pH 6, AP-staining.