

## UK Office

### Everest Biotech Ltd

Cherwell Innovation Centre  
77 Heyford Park  
Upper Heyford  
Oxfordshire  
OX25 5HD  
UK

Enquiries:

[info@everestbiotech.com](mailto:info@everestbiotech.com)

Sales:

[sales@everestbiotech.com](mailto:sales@everestbiotech.com)

Tech support:

[support@everestbiotech.com](mailto:support@everestbiotech.com)

Tel: +44 (0)1869 238326

[www.everestbiotech.com](http://www.everestbiotech.com)

**Research Use Only. Not for  
diagnostic or therapeutic use.**

## EB09844 - Goat Anti-LAIR1 Antibody

Size: 100µg specific antibody in 200µl



### Target Protein

**Principal Names:** CD305, LAIR-1, leukocyte-associated Ig-like receptor 1, leukocyte-associated immunoglobulin-like receptor 1, LAIR1

**Official Symbol:** LAIR1

**Accession Number(s):** NP\_002278.1; NP\_068352.1

**Human GeneID(s):** [3903](#)

**Important Comments:** This antibody is expected to recognize both isoforms (NP\_002278.1; NP\_068352.1).

### Immunogen

Peptide with sequence C-NDTEDVSQASPSE, from the internal region of the protein sequence according to NP\_002278.1; NP\_068352.1.

Please note the [peptide](#) is available for sale.

### Purification and Storage

Purified from goat serum by ammonium sulphate precipitation followed by antigen affinity chromatography using the immunizing peptide.

Supplied at 0.5 mg/ml in Tris saline, 0.02% sodium azide, pH7.3 with 0.5% bovine serum albumin.

Aliquot and store at -20°C. Minimize freezing and thawing.

### Applications Tested

**Peptide ELISA:** antibody detection limit dilution 1:1000.

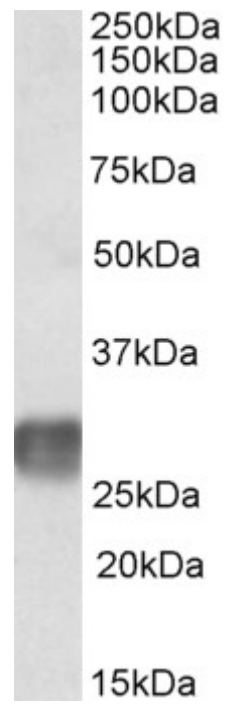
**Western blot:** Approx 28kDa band observed in Human Lymph Node lysates (calculated MW of 29.8kDa according to NP\_068352.1). Recommended concentration: 1-3µg/ml. Primary incubation was 1 hour.

**IHC:** Paraffin embedded Human Tonsil. Recommended concentration: 3.75µg/ml.

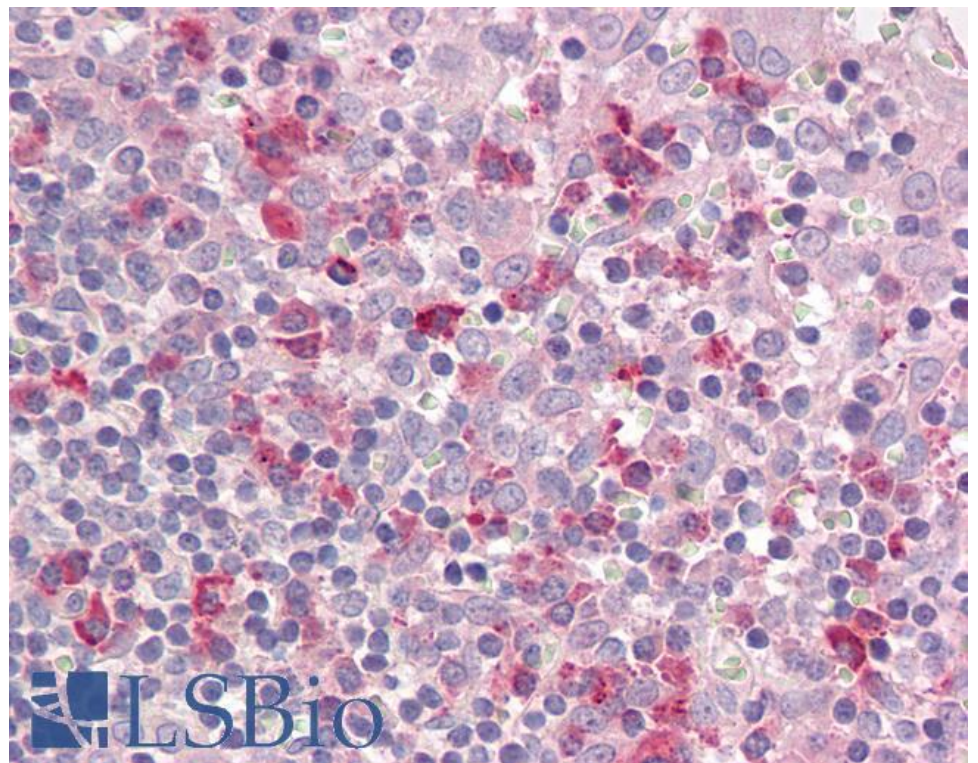
### Species Reactivity

**Tested:** Human

**Expected from sequence similarity:** Human



EB09844 (2µg/ml) staining of Human Lymph Node lysate (35µg protein in RIPA buffer). Detected by chemiluminescence.



EB09844 (3.75µg/ml) staining of paraffin embedded Human Tonsil. Steamed antigen retrieval with citrate buffer pH 6, AP-staining.