



## UK Office

### Everest Biotech Ltd

Cherwell Innovation Centre  
77 Heyford Park  
Upper Heyford  
Oxfordshire  
OX25 5HD  
UK

Enquiries:

[info@everestbiotech.com](mailto:info@everestbiotech.com)

Sales:

[sales@everestbiotech.com](mailto:sales@everestbiotech.com)

Tech support:

[support@everestbiotech.com](mailto:support@everestbiotech.com)

Tel: +44 (0)1869 238326

[www.everestbiotech.com](http://www.everestbiotech.com)

**Research Use Only. Not for  
diagnostic or therapeutic use.**

## EB08538 - Goat Anti-KPNA6 Antibody

Size: 100µg specific antibody in 200µl



### Target Protein

**Principal Names:** KPNA6, karyopherin alpha 6 (importin alpha 7), FLJ11249, IPOA7, KPNA7, MGC17918, importin alpha 7 subunit, importin-alpha-S2, karyopherin alpha 6

**Official Symbol:** KPNA6

**Accession Number(s):** NP\_036448.1

**Human GeneID(s):** [23633](#)

**Non-Human GeneID(s):** 16650 (mouse), 362607 (rat)

### Immunogen

Peptide with sequence C-STTGESVITREMVE, from the internal of the protein sequence according to NP\_036448.1.

Please note the [peptide](#) is available for sale.

### Purification and Storage

Purified from goat serum by ammonium sulphate precipitation followed by antigen affinity chromatography using the immunizing peptide.

Supplied at 0.5 mg/ml in Tris saline, 0.02% sodium azide, pH7.3 with 0.5% bovine serum albumin.

Aliquot and store at -20°C. Minimize freezing and thawing.

### Applications Tested

**Peptide ELISA:** antibody detection limit dilution 1:128000.

**Western blot:** Approx 60kDa band observed in Human Skeletal Muscle lysates (calculated MW of 60.0kDa according to NP\_036448.1). Recommended concentration: 0.1-0.3µg/ml. Some minor background is detected and is blocked by the immunizing peptide. We call for caution when used for other assays than Western blot.

**IHC:** In paraffin embedded Human Adrenal Gland shows staining of cytoplasm and some nuclear membrane (nuclear pores). Recommended concentration, 3-6µg/ml.

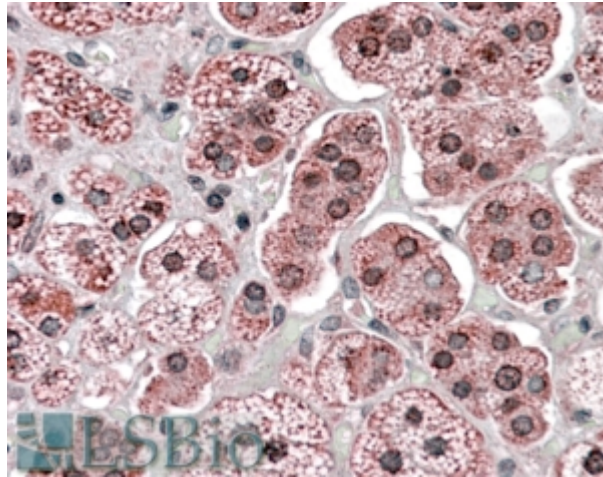
### Species Reactivity

**Tested:** Human

**Expected from sequence similarity:** Human, Mouse, Rat, Dog, Pig, Cow



EB08538 (0.1 $\mu$ g/ml) staining of Human Muscle lysate (35 $\mu$ g protein in RIPA buffer). Primary incubation was 1 hour. Detected by chemiluminescence.



EB08538 (3.8 $\mu$ g/ml) staining of paraffin embedded Human Adrenal Gland. Steamed antigen retrieval with citrate buffer pH 6, AP-staining.