

## UK Office

### Everest Biotech Ltd

Cherwell Innovation Centre  
77 Heyford Park  
Upper Heyford  
Oxfordshire  
OX25 5HD  
UK

Enquiries:

[info@everestbiotech.com](mailto:info@everestbiotech.com)

Sales:

[sales@everestbiotech.com](mailto:sales@everestbiotech.com)

Tech support:

[support@everestbiotech.com](mailto:support@everestbiotech.com)

Tel: +44 (0)1869 238326

[www.everestbiotech.com](http://www.everestbiotech.com)

**Research Use Only. Not for  
diagnostic or therapeutic use.**

## EB06238 - Goat Anti-KPNA4 / IPOA3 Antibody

Size: 100µg specific antibody in 200µl



### Target Protein

**Principal Names:** KPNA4, IPOA3, QIP1, SRP3, MGC12217, MGC26703, karyopherin alpha 4 (importin alpha 3), importin alpha 3, importin-alpha-Q1, karyopherin alpha 4

**Official Symbol:** KPNA4

**Accession Number(s):** NP\_002259.1

**Human GeneID(s):** [3840](#)

### Immunogen

Peptide with sequence C-NSSANVPTEGFQF, from the C Terminus of the protein sequence according to NP\_002259.1.

Please note the [peptide](#) is available for sale.

### Purification and Storage

Purified from goat serum by ammonium sulphate precipitation followed by antigen affinity chromatography using the immunizing peptide.

Supplied at 0.5 mg/ml in Tris saline, 0.02% sodium azide, pH7.3 with 0.5% bovine serum albumin.

Aliquot and store at -20°C. Minimize freezing and thawing.

### Applications Tested

**Peptide ELISA:** antibody detection limit dilution 1:32000.

**Western blot:** Approx 55-60kDa band observed in Human Testis lysates (predicted size of approx. 58kDa according to NP\_002259.1). Recommended concentration: 0.2-1µg/ml. Primary incubated for 1 hour.

**IHC:** In paraffin embedded Human Testis shows strong nuclear staining of some cells in the seminiferous tubules. Recommended concentration: 3µg/ml. In paraffin embedded Human Small Intestine shows pixulate staining in nuclei of enterocytes. Recommended concentration: 1-2µg/ml.

### Species Reactivity

**Tested:** Human, Mouse

**Expected from sequence similarity:** Human, Mouse, Rat, Dog, Cow

### Specific Reference

**This antibody has been successfully used in Western blot in Human and Mouse:**

Huenniger K, Krämer A, Soom M, Chang I, Köhler M, Depping R, Kehlenbach RH, Kaether C.

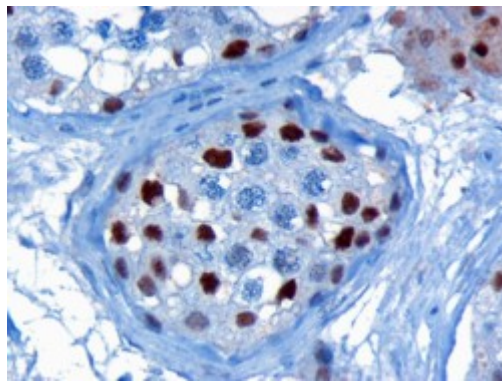
Notch1 signaling is mediated by importins alpha 3, 4, and 7.

Cell Mol Life Sci. 2010 Sep;67(18):3187-96.

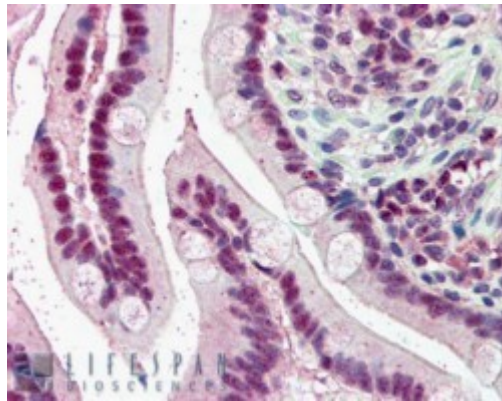
PMID: 20454918



EB06238 staining (0.5µg/ml) of Human Testis lysate (RIPA buffer, 35µg total protein per lane). Detected by chemiluminescence.



EB06238 (3µg/ml) staining of paraffin embedded Human Testis. Microwaved antigen retrieval with citrate buffer pH 6, HRP-staining.



EB06238 (5µg/ml) staining of paraffin embedded Human Small Intestine. Steamed antigen retrieval with citrate buffer pH 6, AP-staining.