

UK Office

Everest Biotech Ltd

Cherwell Innovation Centre
77 Heyford Park
Upper Heyford
Oxfordshire
OX25 5HD
UK

Enquiries:

info@everestbiotech.com

Sales:

sales@everestbiotech.com

Tech support:

support@everestbiotech.com

Tel: +44 (0)1869 238326

www.everestbiotech.com

**Research Use Only. Not for
diagnostic or therapeutic use.**

EB06232 - Goat Anti-KPNA1 / Importin alpha 5 Antibody

Size: 100µg specific antibody in 200µl



Target Protein

Principal Names: KPNA1, importin alpha 5, RCH2, SRP1, NPI-1, karyopherin alpha 1 (importin alpha 5), IPOA5, importin-alpha-S1, karyopherin alpha 1, nucleoprotein interactor 1, recombination activating gene cohort 2

Official Symbol: KPNA1

Accession Number(s): NP_002255.3

Human GeneID(s): [3836](#)

Non-Human GeneID(s): 16646 (mouse), 288064 (rat)

Immunogen

Peptide with sequence TTPGKENFRLKSY-C, from the N Terminus of the protein sequence according to NP_002255.3.

Please note the [peptide](#) is available for sale.

Purification and Storage

Purified from goat serum by ammonium sulphate precipitation followed by antigen affinity chromatography using the immunizing peptide.

Supplied at 0.5 mg/ml in Tris saline, 0.02% sodium azide, pH7.3 with 0.5% bovine serum albumin.

Aliquot and store at -20°C. Minimize freezing and thawing.

Applications Tested

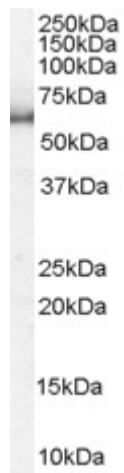
Peptide ELISA: antibody detection limit dilution 1:32000.

Western blot: Approx 60kDa band observed in lysates of cell lines HEK293 and HeLa (calculated MW of 60.3kDa according to NP_002255.1). Recommended concentration: 1-3µg/ml.

Species Reactivity

Tested: Human

Expected from sequence similarity: Human, Mouse, Rat, Dog, Pig, Cow



EB06232 staining (1µg/ml) of HeLa lysate (RIPA buffer, 35µg total protein per lane). Primary incubated for 1 hour. Detected by chemiluminescence.