

## UK Office

### Everest Biotech Ltd

Cherwell Innovation Centre  
77 Heyford Park  
Upper Heyford  
Oxfordshire  
OX25 5HD  
UK

Enquiries:

[info@everestbiotech.com](mailto:info@everestbiotech.com)

Sales:

[sales@everestbiotech.com](mailto:sales@everestbiotech.com)

Tech support:

[support@everestbiotech.com](mailto:support@everestbiotech.com)

Tel: +44 (0)1869 238326

[www.everestbiotech.com](http://www.everestbiotech.com)

**Research Use Only. Not for  
diagnostic or therapeutic use.**

## EB09307 - Goat Anti-Klk6 / neurosin (mouse) Antibody

Size: 100µg specific antibody in 200µl



### Target Protein

**Principal Names:** Klk6, kallikrein related-peptidase 6, A1849898, Bssp, Klk29, Klk7, Prss18, Prss9, neurosin, kallikrein 29, kallikrein 6, kallikrein 7, protease M, protease, serine, 18, protease, serine, 9

**Official Symbol:** Klk6

**Accession Number(s):** NP\_035307.1

**Non-Human GeneID(s):** 19144 (mouse), 29245 (rat)

### Immunogen

Peptide with sequence KEKPGVYTDVCTHIR, from the C Terminus of the protein sequence according to NP\_035307.1.

Please note the [peptide](#) is available for sale.

### Purification and Storage

Purified from goat serum by ammonium sulphate precipitation followed by antigen affinity chromatography using the immunizing peptide.

Supplied at 0.5 mg/ml in Tris saline, 0.02% sodium azide, pH7.3 with 0.5% bovine serum albumin.

Aliquot and store at -20°C. Minimize freezing and thawing.

### Applications Tested

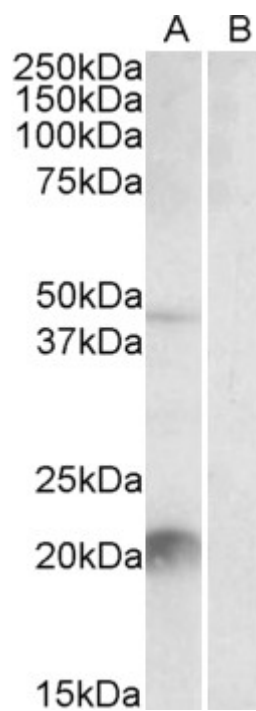
**Peptide ELISA:** antibody detection limit dilution 1:16000.

**Western blot:** Approx 22kDa band observed in Mouse Liver lysates (calculated MW of 27.5kDa according to NP\_035307.1). Recommended concentration: 1-3µg/ml. An additional band of unknown identity was also consistently observed at 48kDa. Both bands were successfully blocked by incubation with the immunising peptide. We would appreciate any feedback from people in the field - have any results been reported with other antibodies/lysates? Have any further splice variants/modified forms been reported?

### Species Reactivity

**Tested:** Mouse

**Expected from sequence similarity:** Mouse, Rat, Cow



EB09307 staining (2 $\mu$ g/ml) of Mouse Liver lysate (35 $\mu$ g protein in RIPA buffer) with (B) and without (A) blocking with the immunising peptide. Primary incubation was 1 hour. Detected by chemiluminescence.