

## UK Office

### Everest Biotech Ltd

Cherwell Innovation Centre  
77 Heyford Park  
Upper Heyford  
Oxfordshire  
OX25 5HD  
UK

Enquiries:

[info@everestbiotech.com](mailto:info@everestbiotech.com)

Sales:

[sales@everestbiotech.com](mailto:sales@everestbiotech.com)

Tech support:

[support@everestbiotech.com](mailto:support@everestbiotech.com)

Tel: +44 (0)1869 238326

[www.everestbiotech.com](http://www.everestbiotech.com)

**Research Use Only. Not for  
diagnostic or therapeutic use.**

## EB07676 - Goat Anti-KLK5 Antibody

Size: 100µg specific antibody in 200µl



### Target Protein

**Principal Names:** KLK5, kallikrein-related peptidase 5, KLK-L2, KLKL2, SCTE, kallikrein 5, kallikrein-like protein 2, stratum corneum tryptic enzyme

**Official Symbol:** KLK5

**Accession Number(s):** NP\_036559.1

**Human GeneID(s):** [25818](#)

**Important Comments:** Reported variants represent identical protein (NP\_036559.1; NP\_001070959.1; NP\_001070960.1).

### Immunogen

Peptide with sequence KAGRDSCQGD, from the internal region of the protein sequence according to NP\_036559.1.

Please note the [peptide](#) is available for sale.

### Purification and Storage

Purified from goat serum by ammonium sulphate precipitation followed by antigen affinity chromatography using the immunizing peptide.

Supplied at 0.5 mg/ml in Tris saline, 0.02% sodium azide, pH7.3 with 0.5% bovine serum albumin.

Aliquot and store at -20°C. Minimize freezing and thawing.

### Applications Tested

**Peptide ELISA:** antibody detection limit dilution 1:1000.

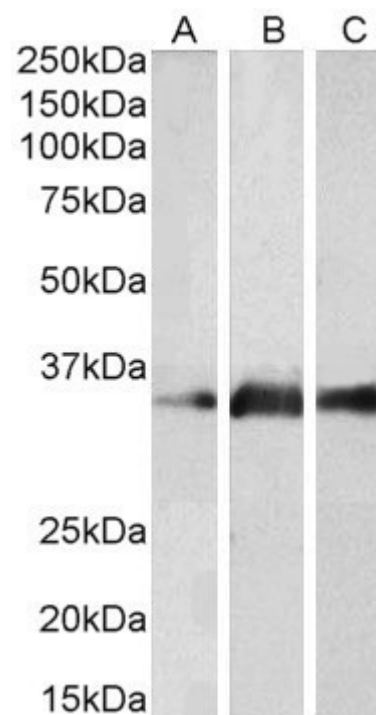
**Western blot:** Approx 35kDa band observed in Human Brain (Cerebellum), Mouse Brain and Rat Brain lysates (calculated MW of 32.0kDa according to NP\_036559.1).

Recommended concentration: 1-3µg/ml.

### Species Reactivity

**Tested:** Human, Mouse, Rat

**Expected from sequence similarity:** Human; Rat, Dog, Cow



EB07676 (2µg/ml) staining of Human Brain (Cerebellum) (A), Mouse Brain (B) and Rat Brain (C) lysates (35µg protein in RIPA buffer). Primary incubation was 1 hour. Detected by chemiluminescence.