

## UK Office

### Everest Biotech Ltd

Cherwell Innovation Centre  
77 Heyford Park  
Upper Heyford  
Oxfordshire  
OX25 5HD  
UK

Enquiries:

[info@everestbiotech.com](mailto:info@everestbiotech.com)

Sales:

[sales@everestbiotech.com](mailto:sales@everestbiotech.com)

Tech support:

[support@everestbiotech.com](mailto:support@everestbiotech.com)

Tel: +44 (0)1869 238326

[www.everestbiotech.com](http://www.everestbiotech.com)

**Research Use Only. Not for  
diagnostic or therapeutic use.**

## EB05466 - Goat Anti-KLF16 / DRRF Antibody

Size: 100µg specific antibody in 200µl



### Target Protein

**Principal Names:** KLF16, DRRF, BTEB4, NSLP2, Kruppel-like factor 16, BTE-binding protein 4, dopamine receptor regulating factor, basic transcription element binding protein 4

**Official Symbol:** KLF16

**Accession Number(s):** NP\_114124.1

**Human GeneID(s):** [83855](#)

### Immunogen

Peptide with sequence C-PAPSPAPSPAPAGL, from the C Terminus of the protein sequence according to NP\_114124.1.

Please note the [peptide](#) is available for sale.

### Purification and Storage

Purified from goat serum by ammonium sulphate precipitation followed by antigen affinity chromatography using the immunizing peptide.

Supplied at 0.5 mg/ml in Tris saline, 0.02% sodium azide, pH7.3 with 0.5% bovine serum albumin.

Aliquot and store at -20°C. Minimize freezing and thawing.

### Applications Tested

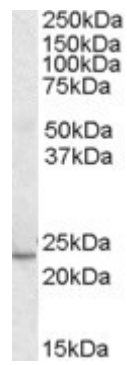
**Peptide ELISA:** antibody detection limit dilution 1:32000.

**Western blot:** Approx .24kDa band observed in Human Heart lysates (calculated MW of 25.4kDa according to NP\_114124.1). Recommended concentration: 0.3-1µg/ml.

### Species Reactivity

**Tested:** Human

**Expected from sequence similarity:** Human, Mouse, Rat, Dog, Cow



EB05466 (0.3µg/ml) staining of Human Heart lysate (35µg protein in RIPA buffer). Primary incubation was 1 hour. Detected by chemiluminescence.