

## UK Office

### Everest Biotech Ltd

Cherwell Innovation Centre  
77 Heyford Park  
Upper Heyford  
Oxfordshire  
OX25 5HD  
UK

Enquiries:

[info@everestbiotech.com](mailto:info@everestbiotech.com)

Sales:

[sales@everestbiotech.com](mailto:sales@everestbiotech.com)

Tech support:

[support@everestbiotech.com](mailto:support@everestbiotech.com)

Tel: +44 (0)1869 238326

[www.everestbiotech.com](http://www.everestbiotech.com)

**Research Use Only. Not for  
diagnostic or therapeutic use.**

## EB05401 - Goat Anti-KLF1 / EKLF Antibody

Size: 100µg specific antibody in 200µl



### Target Protein

**Principal Names:** KLF1, EKLF, Kruppel-like factor 1 (erythroid), erythroid Kruppel-like factor, INLU, monoclonal antibody A3D8

**Official Symbol:** KLF1

**Accession Number(s):** NP\_006554.1

**Human GeneID(s):** [10661](#)

### Immunogen

Peptide with sequence ATAETALPSISTLT-C, from the N Terminus of the protein sequence according to NP\_006554.1.

Please note the [peptide](#) is available for sale.

### Purification and Storage

Purified from goat serum by ammonium sulphate precipitation followed by antigen affinity chromatography using the immunizing peptide.

Supplied at 0.5 mg/ml in Tris saline, 0.02% sodium azide, pH7.3 with 0.5% bovine serum albumin.

Aliquot and store at -20°C. Minimize freezing and thawing.

### Applications Tested

**Peptide ELISA:** antibody detection limit dilution 1:32000.

**Western blot:** Preliminary experiments gave an approx 52kDa band in K562 cell lysate after 1µg/ml antibody staining. Please note that currently we cannot find an explanation in the literature for the band we observe given the predicted size of 38kDa according to NP\_006554.1. The 52kDa band was successfully blocked by incubation with the immunizing peptide.

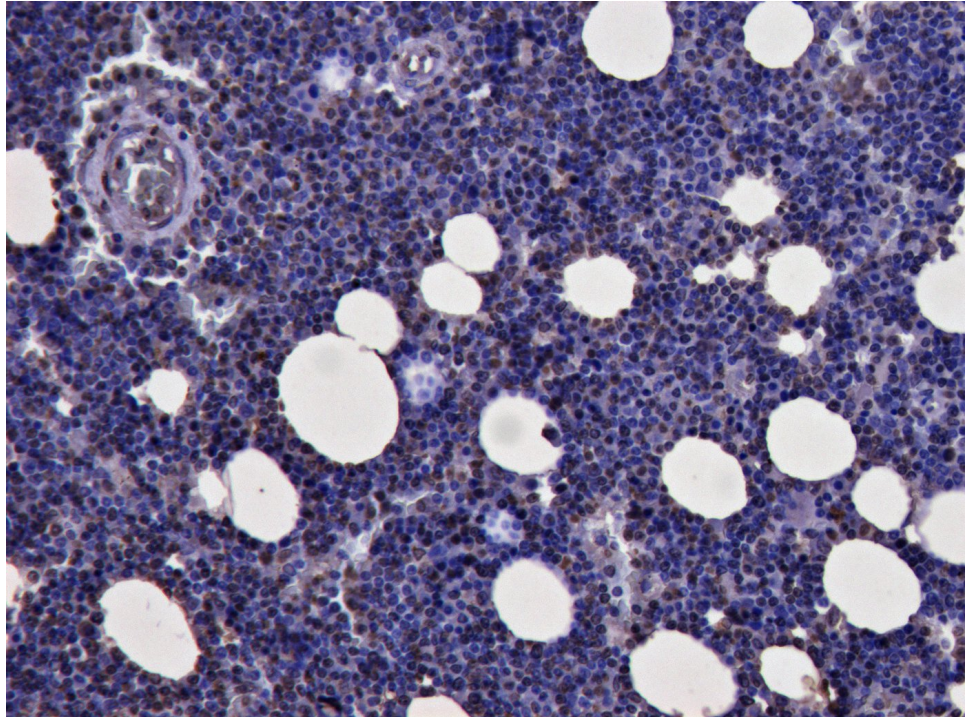
**IHC:** Paraffin embedded Human Bone Marrow. Recommended concentration: 5µg/ml.

**Chromatin Immunoprecipitation:** Customers found positive results in ChIP on Human CD34+ cells and in embryonic Mouse cells.

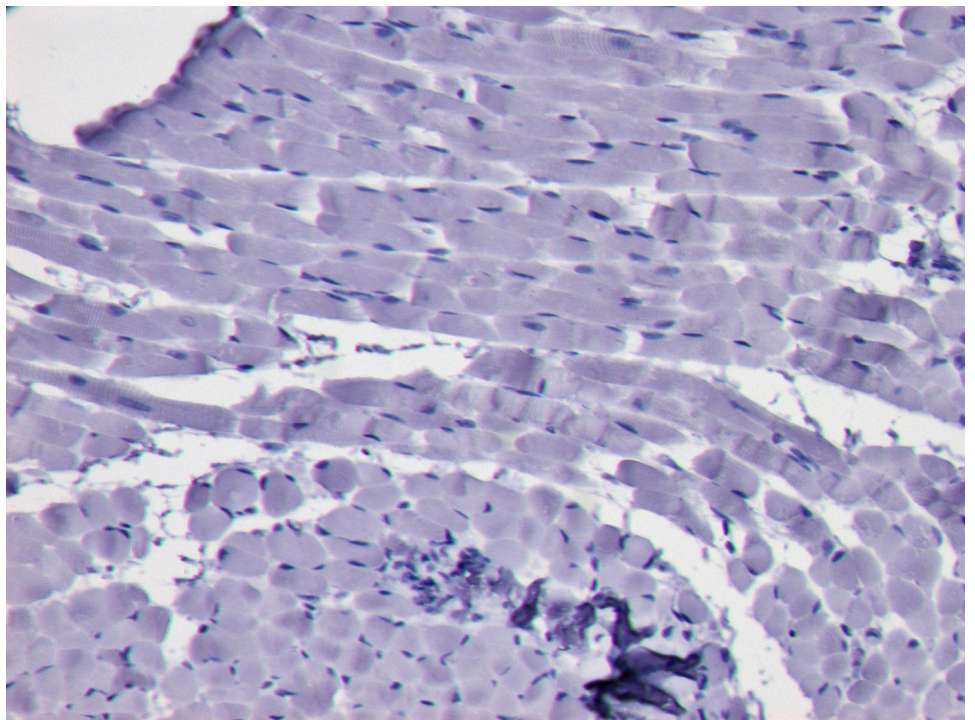
### Species Reactivity

**Tested:** Human, Mouse

**Expected from sequence similarity:** Human, Dog, Pig, Cow



EB05401 (3µg/ml) staining of paraffin embedded Human Bone Marrow. Heat induced antigen retrieval with citrate buffer pH 6, HRP-staining.



EB05401 Negative Control showing staining of paraffin embedded Human Bone Marrow, with no primary antibody.