

UK Office

Everest Biotech Ltd

Cherwell Innovation Centre
77 Heyford Park
Upper Heyford
Oxfordshire
OX25 5HD
UK

Enquiries:

info@everestbiotech.com

Sales:

sales@everestbiotech.com

Tech support:

support@everestbiotech.com

Tel: +44 (0)1869 238326

www.everestbiotech.com

**Research Use Only. Not for
diagnostic or therapeutic use.**

EB08090 - Goat Anti-KCC3 / SLC12A6 Antibody

Size: 100µg specific antibody in 200µl



Target Protein

Principal Names: SLC12A6, KCC3, solute carrier family 12 (potassium/chloride transporters), member 6, ACCPN, DKFZP434D2135, KCC3A, KCC3B, potassium chloride cotransporter 3, electroneutral potassium-chloride cotransporter 3, K-Cl cotransporter 3, potassium chloride cotransporter KCC3a-S3, potassium-chloride transporter-3a, potassium-chloride transporter-3b, solute carrier family 12 (potassium/chloride transporter), member 6

Official Symbol: SLC12A6

Accession Number(s): NP_001035959.1; NP_001035960.1; NP_001035961.1; NP_001035962.1; NP_005126.1; NP_598408.1

Human GeneID(s): [9990](#)

Important Comments: This antibody is expected to recognise all reported isoforms (NP_598408.1; NP_005126.1; NP_001035959.1; NP_001035961.1; NP_001035962.1); Reported variants represent identical protein: NP_001035959.1; NP_001035960.1

Immunogen

Peptide with sequence SRHIDVCSKTKE, from the internal region of the protein sequence according to NP_001035959.1; NP_001035960.1; NP_001035961.1; NP_001035962.1; NP_005126.1; NP_598408.1.

Please note the [peptide](#) is available for sale.

Purification and Storage

Purified from goat serum by ammonium sulphate precipitation followed by antigen affinity chromatography using the immunizing peptide.

Supplied at 0.5 mg/ml in Tris saline, 0.02% sodium azide, pH7.3 with 0.5% bovine serum albumin.

Aliquot and store at -20°C. Minimize freezing and thawing.

Applications Tested

Peptide ELISA: antibody detection limit dilution 1:16000.

Western blot: Approx 120kDa band observed in Human Heart and Kidney lysates (calculated MW ranging 121-128kDa according to NP_598408.1; NP_005126.1; NP_001035959.1; NP_001035960.1; NP_001035961.1; NP_001035962.1).

Recommended concentration: 0.1-0.3µg/ml.

IHC: In paraffin embedded Human Heart shows staining of myocardial fibrils in transverse section. Recommended concentration, 2-4µg/ml.

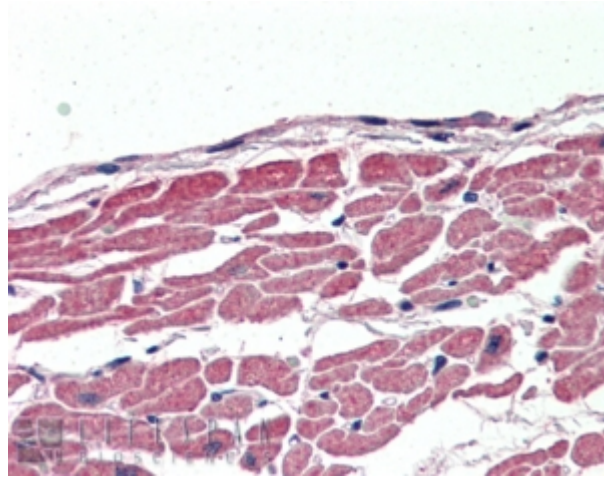
Species Reactivity

Tested: Human

Expected from sequence similarity: Human



EB08090 (0.1µg/ml) staining of Human Heart lysate (35µg protein in RIPA buffer). Primary incubation was 1 hour. Detected by chemiluminescence.



EB08090 (2.5µg/ml) staining of paraffin embedded Human Heart. Steamed antigen retrieval with citrate buffer pH 6, AP-staining.