

## UK Office

### Everest Biotech Ltd

Cherwell Innovation Centre  
77 Heyford Park  
Upper Heyford  
Oxfordshire  
OX25 5HD  
UK

Enquiries:

[info@everestbiotech.com](mailto:info@everestbiotech.com)

Sales:

[sales@everestbiotech.com](mailto:sales@everestbiotech.com)

Tech support:

[support@everestbiotech.com](mailto:support@everestbiotech.com)

Tel: +44 (0)1869 238326

[www.everestbiotech.com](http://www.everestbiotech.com)

**Research Use Only. Not for  
diagnostic or therapeutic use.**

## EB08088 - Goat Anti-KCC1 / SLC12A4 Antibody

Size: 100µg specific antibody in 200µl



### Target Protein

**Principal Names:** SLC12A4, KCC1, solute carrier family 12 (potassium/chloride transporters), member 4, FLJ40489, potassium transport protein, potassium/chloride cotransporter 1

**Official Symbol:** SLC12A4

**Accession Number(s):** NP\_005063.1

**Human GeneID(s):** [6560](#)

**Non-Human GeneID(s):** 20498 (mouse), 29501 (rat)

### Immunogen

Peptide with sequence C-DPSHAPDNFRE, from the internal region of the protein sequence according to NP\_005063.1.

Please note the [peptide](#) is available for sale.

### Purification and Storage

Purified from goat serum by ammonium sulphate precipitation followed by antigen affinity chromatography using the immunizing peptide.

Supplied at 0.5 mg/ml in Tris saline, 0.02% sodium azide, pH7.3 with 0.5% bovine serum albumin.

Aliquot and store at -20°C. Minimize freezing and thawing.

### Applications Tested

**Peptide ELISA:** antibody detection limit dilution 1:4000.

**Western blot:** Approx 150kDa band observed in Human Heart lysates (calculated MW of 121kDa according to NP\_005063.1). Recommended concentration: 0.3-1 µg/ml.

**IHC:** Paraffin embedded Human Placenta. Recommended concentration: 5 µg/ml.

### Species Reactivity

**Tested:** Human

**Expected from sequence similarity:** Human, Mouse, Rat, Dog

### Specific Reference

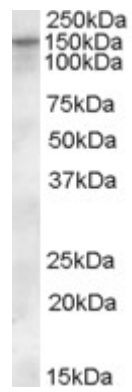
**This antibody has been successfully used in Western blot in Human:**

Wei WC, Akerman CJ, Newey SE, Pan J, Clinch NW, Jacob Y, Shen MR, Wilkins RJ, Ellory JC.

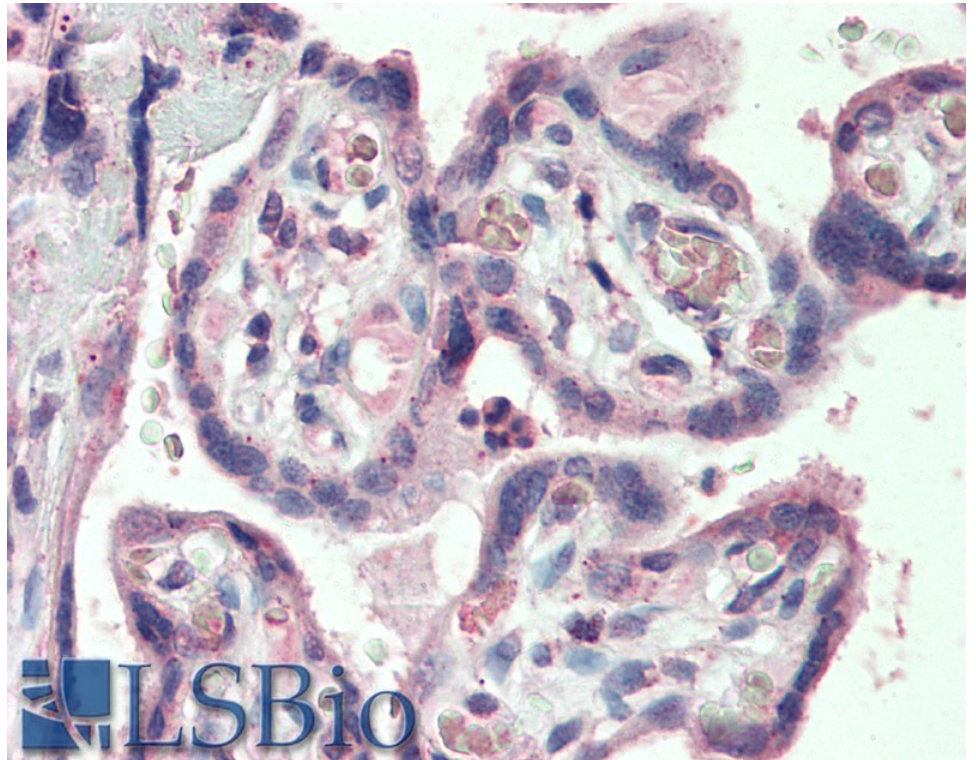
The potassium-chloride cotransporter 2 promotes cervical cancer cell migration and invasion by an ion transport-independent mechanism.

J Physiol. 2011 Nov 15;589(Pt 22):5349-59.

PMID: 21911617



EB08088 (0.3µg/ml) staining of Human Heart lysate (35µg protein in RIPA buffer). Primary incubation was 1 hour. Detected by chemiluminescence.



EB08088 (5µg/ml) staining of paraffin embedded Human Placenta. Steamed antigen retrieval with citrate buffer pH 6, AP-staining.