

## UK Office

### Everest Biotech Ltd

Cherwell Innovation Centre  
77 Heyford Park  
Upper Heyford  
Oxfordshire  
OX25 5HD  
UK

Enquiries:

[info@everestbiotech.com](mailto:info@everestbiotech.com)

Sales:

[sales@everestbiotech.com](mailto:sales@everestbiotech.com)

Tech support:

[support@everestbiotech.com](mailto:support@everestbiotech.com)

Tel: +44 (0)1869 238326

[www.everestbiotech.com](http://www.everestbiotech.com)

**Research Use Only. Not for  
diagnostic or therapeutic use.**

## EB06455 - Goat Anti-JIK / TAOK3 Antibody

Size: 100µg specific antibody in 200µl



### Target Protein

**Principal Names:** TAOK3, JIK, TAO kinase 3, DPK, STE20-like kinase, STE2-like kinase, DKFZp666H245, FLJ31808, MAP3K18

**Official Symbol:** TAOK3

**Accession Number(s):** NP\_057365.3

**Human GeneID(s):** [51347](#)

**Non-Human GeneID(s):** 304530 (rat)

### Immunogen

Peptide with sequence CHKGDHVFIRDEAGHGD, from the internal region of the protein sequence according to NP\_057365.3.

Please note the [peptide](#) is available for sale.

### Purification and Storage

Purified from goat serum by ammonium sulphate precipitation followed by antigen affinity chromatography using the immunizing peptide.

Supplied at 0.5 mg/ml in Tris saline, 0.02% sodium azide, pH7.3 with 0.5% bovine serum albumin.

Aliquot and store at -20°C. Minimize freezing and thawing.

### Applications Tested

**Peptide ELISA:** antibody detection limit dilution 1:32000.

**Western blot:** Approx 100kDa band observed in human Liver lysate (calculated MW of 105kDa according to NP\_057365). Recommended concentration: 0.3-1.0 µg/ml.

**IHC:** In paraffin embedded Human Prostate shows staining of cytoplasm of secretory cells in the glands. Recommended concentration, 2-3µg/ml.

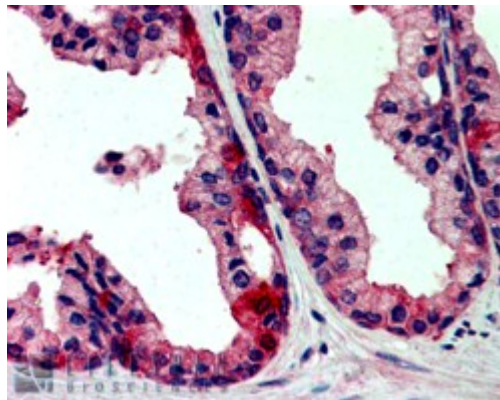
### Species Reactivity

**Tested:** Human

**Expected from sequence similarity:** Human, Mouse, Rat, Dog, Cow



EB06455 (0.1µg/ml) staining of human liver lysate (35µg protein in RIPA buffer). Primary incubation was 1 hour. Detected by chemiluminescence.



EB06455 (2.5µg/ml) staining of paraffin embedded Human Prostate. Steamed antigen retrieval with citrate buffer pH 6, AP-staining.