

UK Office

Everest Biotech Ltd

Cherwell Innovation Centre
77 Heyford Park
Upper Heyford
Oxfordshire
OX25 5HD
UK

Enquiries:

info@everestbiotech.com

Sales:

sales@everestbiotech.com

Tech support:

support@everestbiotech.com

Tel: +44 (0)1869 238326

www.everestbiotech.com

**Research Use Only. Not for
diagnostic or therapeutic use.**

EB07825 - Goat Anti-ITGAM / CD11B Antibody

Size: 100µg specific antibody in 200µl



Target Protein

Principal Names: ITGAM, integrin, alpha M (complement component 3 receptor 3 subunit), CD11B, CR3A, MAC-1, MAC1A, MGC117044, MO1A, Integrin, alpha-M (complement component receptor-3, alpha), antigen CD11B (p170), macrophage antigen, alpha polypeptide, antigen CD11b (p170), complement component receptor 3, alpha, integrin alpha M, integrin, alpha M (complement component receptor 3, alpha), CD11b (p170), macrophage antigen alpha polypeptide, macrophage antigen alpha polypeptide, neutrophil adherence receptor alpha-M subunit

Official Symbol: ITGAM

Accession Number(s): NP_000623.2

Human GeneID(s): [3684](#)

Non-Human GeneID(s): 16409 (mouse), 25021 (rat)

Important Comments: The immunizing peptide represents part of the extra-cellular domain.

Immunogen

Peptide with sequence C-RNDGEDSYRTQ, from the internal region of the protein sequence according to NP_000623.2 .

Please note the [peptide](#) is available for sale.

Purification and Storage

Purified from goat serum by ammonium sulphate precipitation followed by antigen affinity chromatography using the immunizing peptide.

Supplied at 0.5 mg/ml in Tris saline, 0.02% sodium azide, pH7.3 with 0.5% bovine serum albumin.

Aliquot and store at -20°C. Minimize freezing and thawing.

Applications Tested

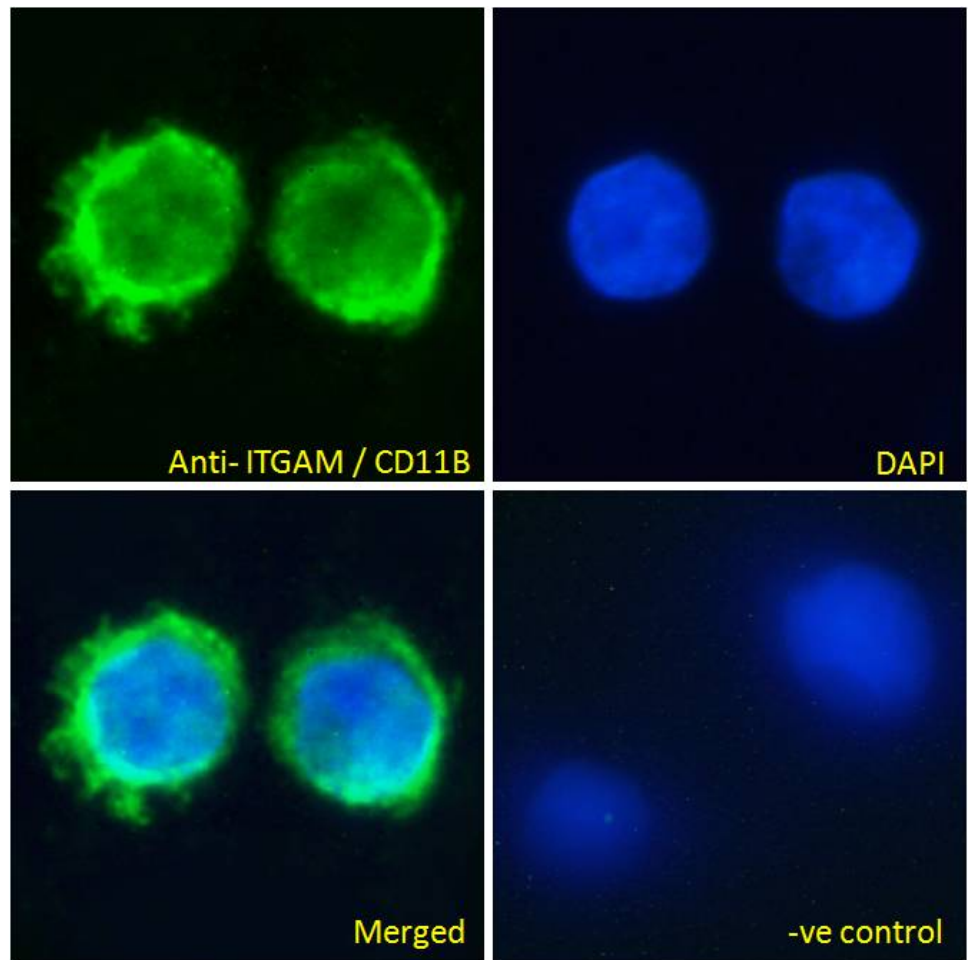
Peptide ELISA: antibody detection limit dilution 1:32000.

Immunofluorescence: Strong expression of the protein seen in the cytoplasm of U937 cells. Recommended concentration: 10µg/ml.

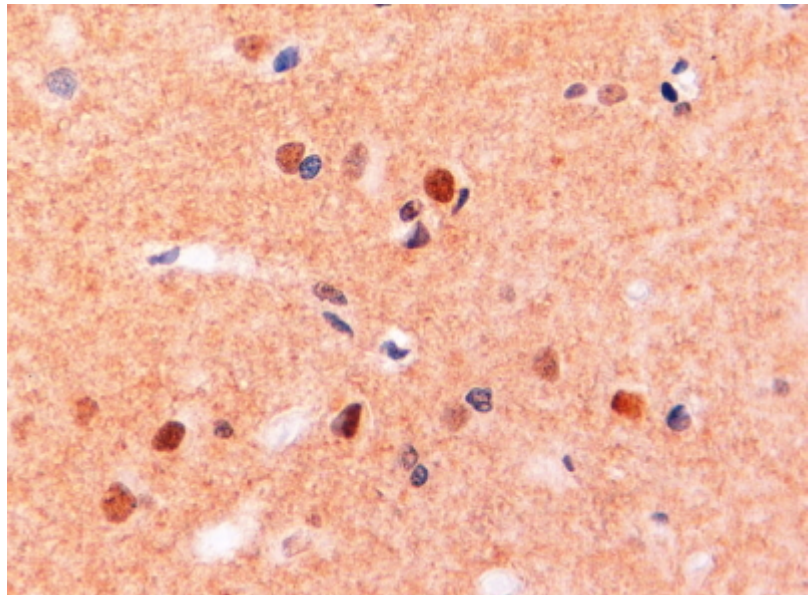
Species Reactivity

Tested: Human

Expected from sequence similarity: Human



EB07825 Immunofluorescence analysis of paraformaldehyde fixed U937 cells, permeabilized with 0.15% Triton. Primary incubation 1hr (10ug/ml) followed by Alexa Fluor 488 secondary antibody (4ug/ml), showing cytoplasmic staining. The nuclear stain is DAPI (blue). Negative control: Unimmunized goat IgG (10ug/ml) followed by Alexa Fluor 488 secondary antibody (4ug/ml).



EB07825 (2µg/ml) staining of paraffin embedded Human Brain. Steamed antigen retrieval with Tris/EDTA buffer pH 9, HRP-staining. **This data is from a previous batch, not on sale.**