

## UK Office

### Everest Biotech Ltd

Cherwell Innovation Centre  
77 Heyford Park  
Upper Heyford  
Oxfordshire  
OX25 5HD  
UK

Enquiries:

[info@everestbiotech.com](mailto:info@everestbiotech.com)

Sales:

[sales@everestbiotech.com](mailto:sales@everestbiotech.com)

Tech support:

[support@everestbiotech.com](mailto:support@everestbiotech.com)

Tel: +44 (0)1869 238326

[www.everestbiotech.com](http://www.everestbiotech.com)

**Research Use Only. Not for  
diagnostic or therapeutic use.**

## EB05585 - Goat Anti-IRF5 Antibody

Size: 100µg specific antibody in 200µl



### Target Protein

**Principal Names:** IRF5, interferon regulatory factor 5, SLEB10

**Official Symbol:** IRF5

**Accession Number(s):** NP\_002191.1; NP\_116032.1; NP\_001092097.1;  
NP\_001092099.1

**Human GeneID(s):** [3663](#)

**Important Comments:** This antibody is expected to recognize all four reported isoforms (NP\_002191.1; NP\_116032.1; NP\_001092097.1; NP\_001092099.1). Reported variants NP\_001092100.1, NP\_001092101.1, NP\_001092098.1, NP\_001092097.1 represent identical protein: Reported variants NP\_116032.1, NP\_001092100.1 represent identical protein:

### Immunogen

Peptide with sequence C-QGPWPMHPAGMQ, from the C Terminus of the protein sequence according to NP\_002191.1; NP\_116032.1; NP\_001092097.1; NP\_001092099.1.

Please note the [peptide](#) is available for sale.

### Purification and Storage

Purified from goat serum by ammonium sulphate precipitation followed by antigen affinity chromatography using the immunizing peptide.

Supplied at 0.5 mg/ml in Tris saline, 0.02% sodium azide, pH7.3 with 0.5% bovine serum albumin.

Aliquot and store at -20°C. Minimize freezing and thawing.

### Applications Tested

**Peptide ELISA:** antibody detection limit dilution 1:128000.

**Western blot:** Approx 60kDa band observed in Human Spleen and Peripheral Blood Lymphocytes lysates. The calculated molecular size is 57.8kDa according to NP\_001092099.1. Recommended concentration: 0.1-0.3µg/ml.

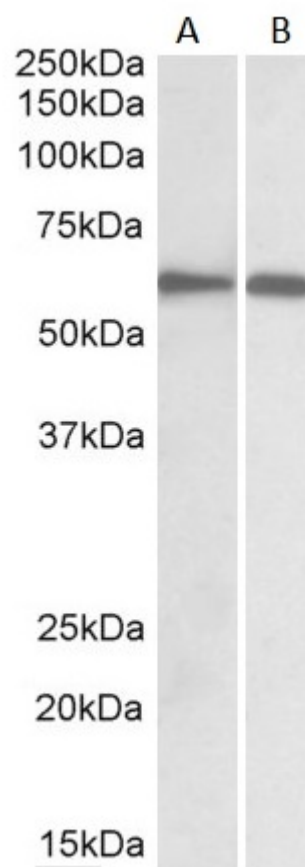
**IHC:** This antibody showed nuclear staining in Human Cervix, as confirmed by customer (data not shown). This data was obtained using a previous batch.

**Chromatin immunoprecipitation:** This antibody has been successfully used in human monocyte-derived dendritic cells. This data was obtained using a previous batch.

### Species Reactivity

**Tested:** Human

**Expected from sequence similarity:** Human, Mouse, Rat, Cow



EB05585 staining (1 $\mu$ g/ml) Human Spleen (A) and Peripheral Blood Lymphocytes (B) lysates (RIPA buffer, 30 $\mu$ g total protein per lane). Primary incubated for 1 hour. Detected by chemiluminescence