

UK Office

Everest Biotech Ltd

Cherwell Innovation Centre
77 Heyford Park
Upper Heyford
Oxfordshire
OX25 5HD
UK

Enquiries:

info@everestbiotech.com

Sales:

sales@everestbiotech.com

Tech support:

support@everestbiotech.com

Tel: +44 (0)1869 238326

www.everestbiotech.com

**Research Use Only. Not for
diagnostic or therapeutic use.**

EB05585-T - Goat Anti-IRF5 Antibody - Trial

Size: 20µg specific antibody in 40µl



Target Protein

Principal Names: IRF5, interferon regulatory factor 5, SLEB10

Official Symbol: IRF5

Accession Number(s): NP_002191.1; NP_116032.1; NP_001092097.1;
NP_001092099.1

Human GeneID(s): [3663](#)

Important Comments: This antibody is expected to recognize all four reported isoforms (NP_002191.1; NP_116032.1; NP_001092097.1; NP_001092099.1). Reported variants NP_001092100.1, NP_001092101.1, NP_001092098.1, NP_001092097.1 represent identical protein: Reported variants NP_116032.1, NP_001092100.1 represent identical protein:

Immunogen

Peptide with sequence C-QGPWPMHPAGMQ, from the C Terminus of the protein sequence according to NP_002191.1; NP_116032.1; NP_001092097.1; NP_001092099.1.

Please note the [peptide](#) is available for sale.

Purification and Storage

Purified from goat serum by ammonium sulphate precipitation followed by antigen affinity chromatography using the immunizing peptide.

Supplied at 0.5 mg/ml in Tris saline, 0.02% sodium azide, pH7.3 with 0.5% bovine serum albumin.

Aliquot and store at -20°C. Minimize freezing and thawing.

Applications Tested

Peptide ELISA: antibody detection limit dilution 1:128000.

Western blot: Approx 60kDa band observed in Human Spleen and Peripheral Blood Lymphocytes lysates. The calculated molecular size is 57.8kDa according to NP_001092099.1. Recommended concentration: 0.1-0.3µg/ml.

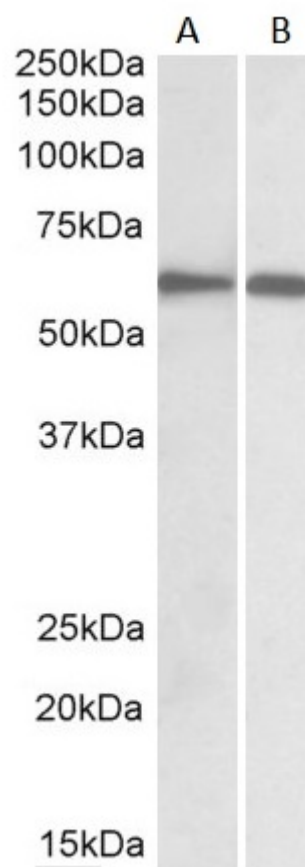
IHC: This antibody showed nuclear staining in Human Cervix, as confirmed by customer (data not shown). This data was obtained using a previous batch.

Chromatin immunoprecipitation: This antibody has been successfully used in human monocyte-derived dendritic cells. This data was obtained using a previous batch.

Species Reactivity

Tested: Human

Expected from sequence similarity: Human, Mouse, Rat, Cow



EB05585 staining (1 μ g/ml) Human Spleen (A) and Peripheral Blood Lymphocytes (B) lysates (RIPA buffer, 30 μ g total protein per lane). Primary incubated for 1 hour. Detected by chemiluminescence