



## UK Office

### Everest Biotech Ltd

Cherwell Innovation Centre  
77 Heyford Park  
Upper Heyford  
Oxfordshire  
OX25 5HD  
UK

Enquiries:

[info@everestbiotech.com](mailto:info@everestbiotech.com)

Sales:

[sales@everestbiotech.com](mailto:sales@everestbiotech.com)

Tech support:

[support@everestbiotech.com](mailto:support@everestbiotech.com)

Tel: +44 (0)1869 238326

[www.everestbiotech.com](http://www.everestbiotech.com)

**Research Use Only. Not for  
diagnostic or therapeutic use.**

## EB07898-B - Goat Anti-Insulysin / Insulinase, Biotinylated Antibody

Size: 100µg specific antibody in 200µl



### Target Protein

**Principal Names:** IDE, insulin degrading enzyme, INSULYSIN, Abeta-degrading protease, insulin protease, insulinase

**Official Symbol:** IDE

**Accession Number(s):** NP\_004960.2; NP\_001159418.1; NP\_001309722.1;  
NP\_001309723.1; NP\_001309724.1; NP\_001309726.1

**Human GeneID(s):** [3416](#)

**Important Comments:** This antibody is expected to recognize all reported isoforms (NP\_004960.2; NP\_001159418.1; NP\_001309722.1; NP\_001309723.1; NP\_001309724.1; NP\_001309726.1). Reported variants represent identical protein: NP\_001309725.1, NP\_001309724.1

### Immunogen

Peptide with sequence CQQYNFDRDNTD., from the internal region of the protein sequence according to NP\_004960.2; NP\_001159418.1; NP\_001309722.1; NP\_001309723.1; NP\_001309724.1; NP\_001309726.1.

Please note the [peptide](#) is available for sale.

### Purification and Storage

Purified from goat serum by ammonium sulphate precipitation followed by antigen affinity chromatography using the immunizing peptide.

Supplied at 0.5 mg/ml in Tris saline, 0.02% sodium azide, pH7.3 with 0.5% bovine serum albumin.

Aliquot and store at -20°C. Minimize freezing and thawing.

### Applications Tested

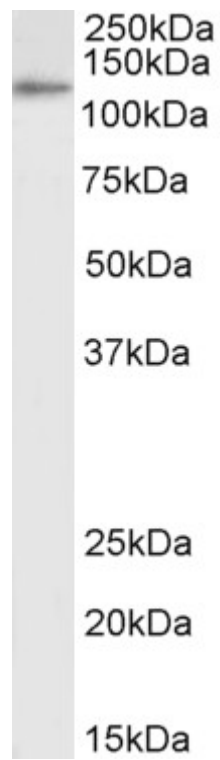
**Peptide ELISA:** antibody detection limit dilution 1:32000.

**Western blot:** Approx 120kDa band observed in lysates of cell line K562 (calculated MW of 118kDa according to NP\_004960.2). See non-biotinylated parental product's datasheet for further QC data. Recommended concentration: 0.3-1µg/ml.

### Species Reactivity

**Tested:** Human

**Expected from sequence similarity:** Human, Dog



Biotinylated EB07898 (0.3 $\mu$ g/ml) staining of K562 lysate (35 $\mu$ g protein in RIPA buffer), exactly mirroring its parental non-biotinylated product. Primary incubation was 1 hour. Detected by chemiluminescence, using streptavidin-HRP and using NAP blocker as a substitute for skimmed milk.