

## UK Office

### Everest Biotech Ltd

Cherwell Innovation Centre  
77 Heyford Park  
Upper Heyford  
Oxfordshire  
OX25 5HD  
UK

Enquiries:

[info@everestbiotech.com](mailto:info@everestbiotech.com)

Sales:

[sales@everestbiotech.com](mailto:sales@everestbiotech.com)

Tech support:

[support@everestbiotech.com](mailto:support@everestbiotech.com)

Tel: +44 (0)1869 238326

[www.everestbiotech.com](http://www.everestbiotech.com)

**Research Use Only. Not for  
diagnostic or therapeutic use.**

## EB05120 - Goat Anti-ILK Antibody

Size: 100µg specific antibody in 200µl



### Target Protein

**Principal Names:** ILK, integrin-linked kinase, P59, DKFZp686F1765, ILK-2, 59 kDa serine/threonine-protein kinase, ILK-1, integrin-linked kinase-2, integrin-linked protein kinase, p59ILK

**Official Symbol:** ILK

**Accession Number(s):** NP\_004508.1; NP\_001014794.1; NP\_001014795.1

**Human GeneID(s):** [3611](#)

**Important Comments:** All 3 variants (represented by NP\_004508.1; NP\_001014794.1 and NP\_001014795.1) encode the same protein.

### Immunogen

Peptide with sequence C-DMIVPILEKMQDK, from the C Terminus of the protein sequence according to NP\_004508.1; NP\_001014794.1; NP\_001014795.1.

Please note the [peptide](#) is available for sale.

### Purification and Storage

Purified from goat serum by ammonium sulphate precipitation followed by antigen affinity chromatography using the immunizing peptide.

Supplied at 0.5 mg/ml in Tris saline, 0.02% sodium azide, pH7.3 with 0.5% bovine serum albumin.

Aliquot and store at -20°C. Minimize freezing and thawing.

### Applications Tested

**Peptide ELISA:** antibody detection limit dilution 1:32000.

**Western blot:** Approx 52kDa band observed in Mouse Kidney lysates and in lysates of cell line NIH3T3 and 50-51kDa in HEK293, A431, HeLa and Jurkat lysates (calculated MW of 51.4kDa according to Human NP\_004508.1 and Mouse NP\_034692.2).

Recommended concentration: 0.5-2µg/ml.

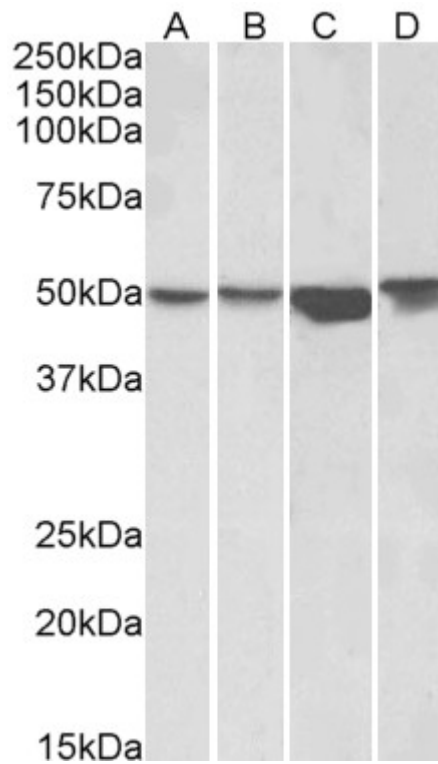
### Species Reactivity

**Tested:** Human, Mouse

**Expected from sequence similarity:** Human, Mouse, Rat, Dog, Cow



EB05120 (0.5 $\mu$ g/ml) staining of NIH3T3 lysate (35 $\mu$ g protein in RIPA buffer). Primary incubation was 1 hour. Detected by chemiluminescence.



EB05120 (1 $\mu$ g/ml) staining of HEK293 (A), A431 (B), HeLa (C) and Jurkat (D) lysates (35 $\mu$ g protein in RIPA buffer). Primary incubation was 1 hour. Detected by chemiluminescence.